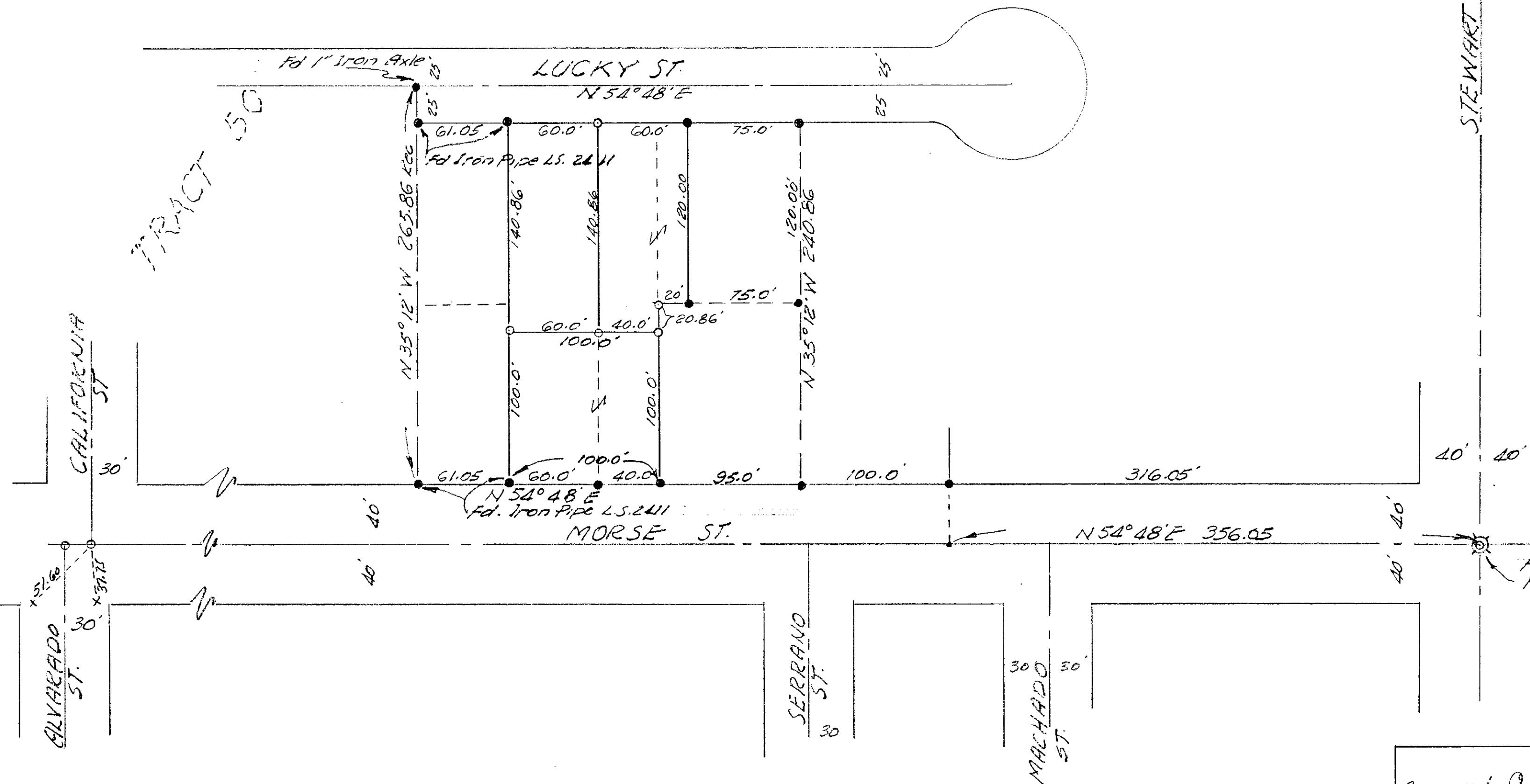


HOTALING LANDS

SCALE 1" = 60'



BASIS OF BEARINGS is the E. of MORSE ST. i.e. N 54° 48' E

- LEGEND
- Monuments found with tag R.C.E. #10301 unless otherwise noted
 - Set 3/4" Iron Pipe with Tag # R.C.E. 10301

CITY OF OCEANSIDE
 SURVEY OF A PORTION OF TR 50
 HOTALING LANDS MAP 1717
 Requested By Frank Hetrick
 SOUTH COAST ENGINEERING
 SERVICE
 W.A. Ayer
 WA AYER R.C.E. 10361
 DATE May 22, 1962.

Approved: Oliver S. Pindler
 R.C.E. #10163
 9-12-62
 DATE