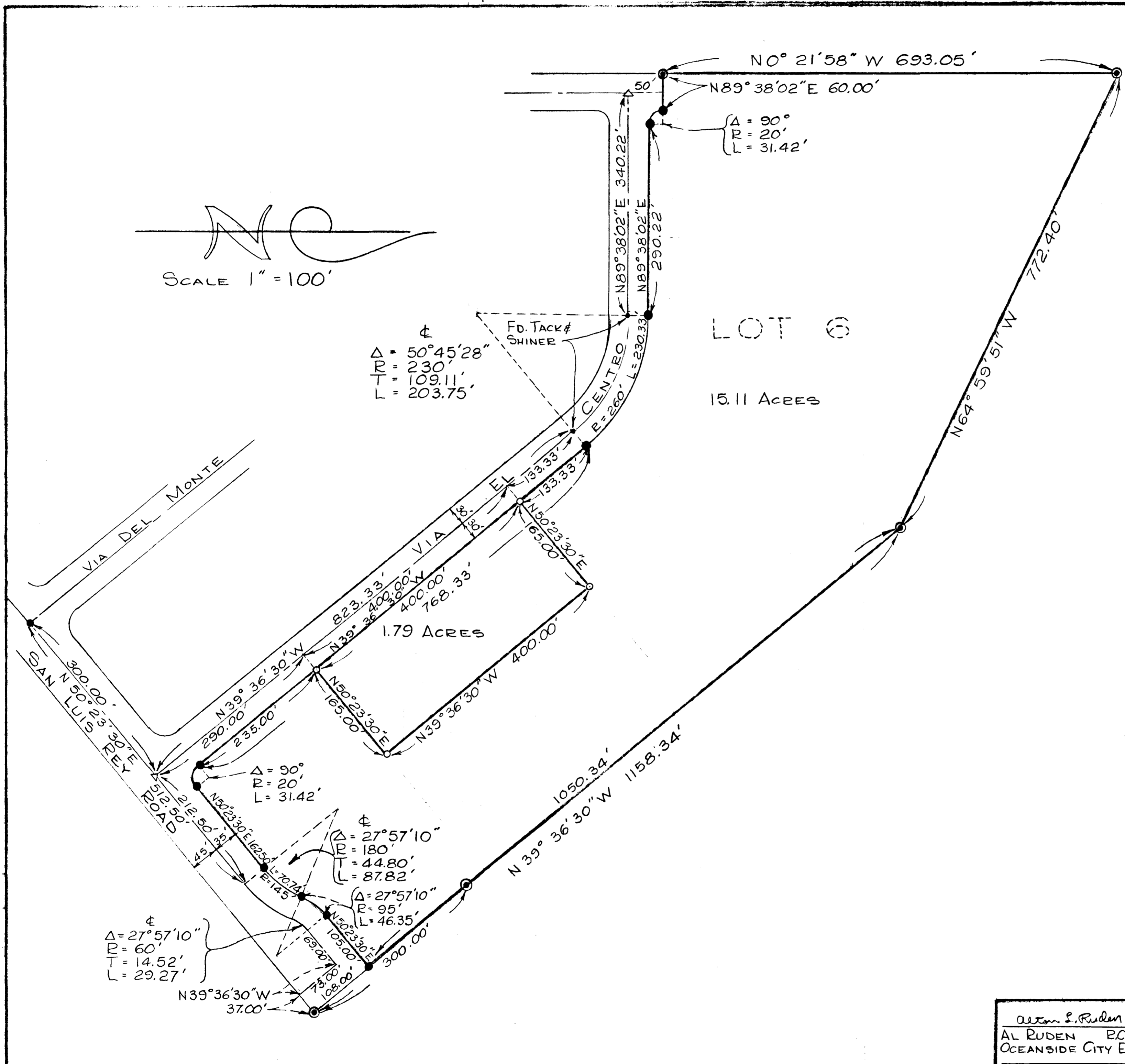
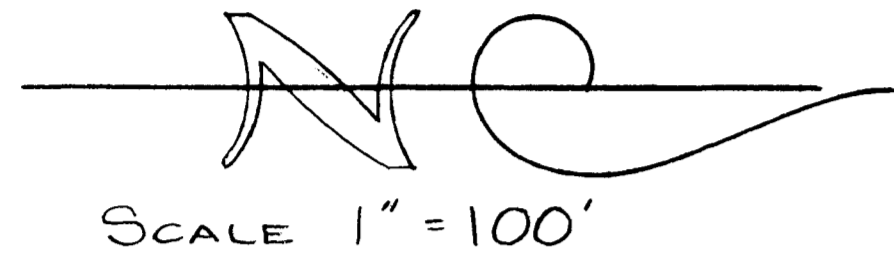


A SURVEY OF A PORTION OF LOT 6 OF OCEANSIDE INDUSTRIAL SUBDIVISION, MAP 3748 IN THE CITY OF OCEANSIDE, COUNTY OF SAN DIEGO, STATE OF CALIFORNIA.



BASIS OF BEARING OF THIS SURVEY IS THE CENTERLINE OF VIA EL CENTRO, ACCORDING TO MAP No. 3748, i.e. N39°36'30"W.

- LEGEND
- INDICATES SET 1" PIPE TAGGED RCE 7604
 - INDICATES FOUND 3/4" PIPE TAGGED L.S. 2789.
 - △ INDICATES FOUND CONCRETE MONUMENT
 - ⊙ INDICATES FOUND 2" PIPE TAGGED L.S. 2789.

LOT SPLIT MAP		
FOR		
ROYMAR LAND COMPANY		
DRAWN J.S.	STETSON, STRAUSS & DEESSELHAUS, INCORPORATED	DATE 5-15-62
CHECKED M.J.M.	<i>Donald F. Deesselhaus</i>	SCALE 1" = 100'
APPROVED	DONALD F. DEESSELHAUS RCE 7604 528 So. Hill St., OCEANSIDE, CALIF.	SHEET 1 OF 1

AL RUDEN 5-29-62
AL RUDEN RCE 10163
OCEANSIDE CITY ENGINEER
1962