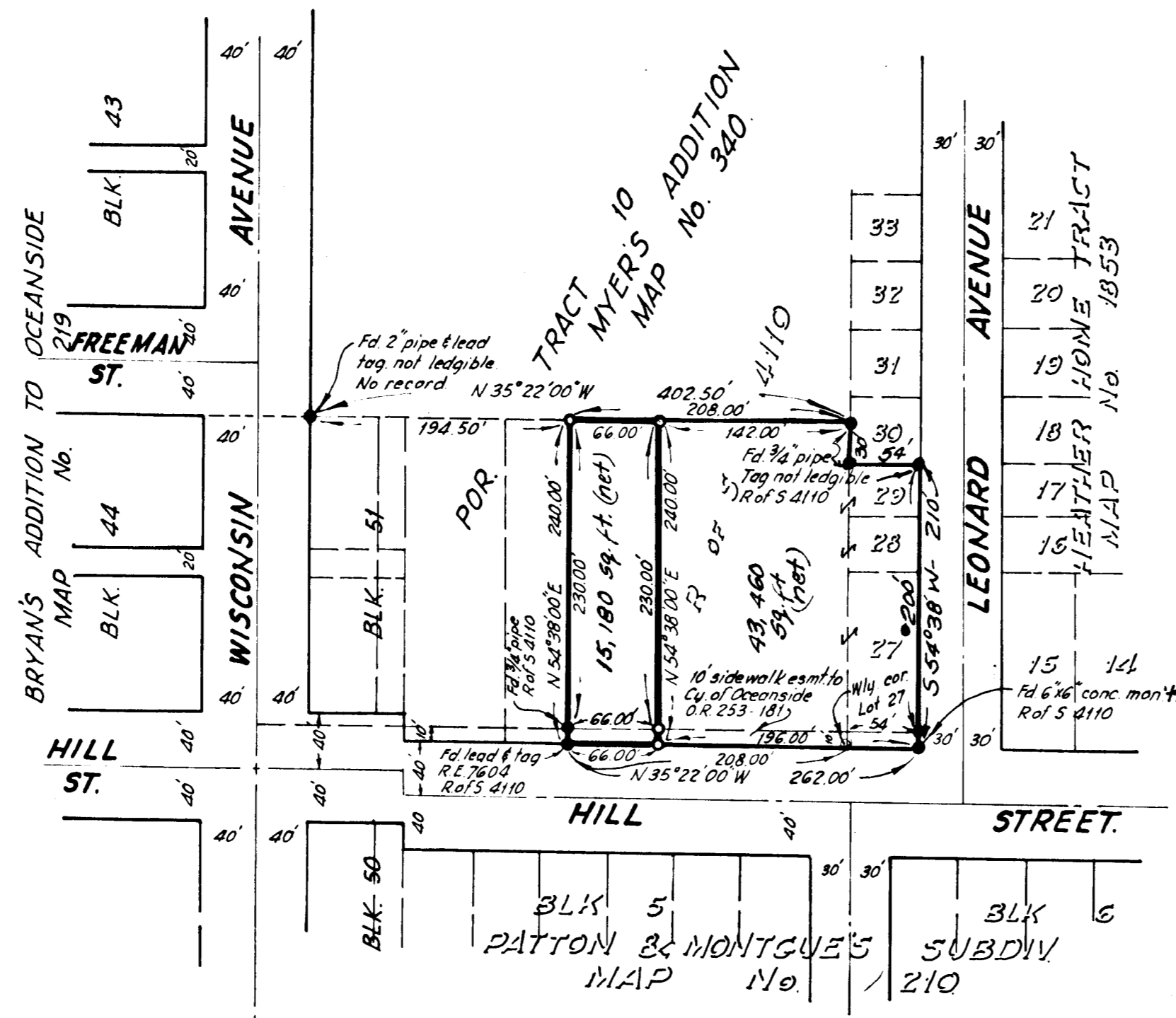
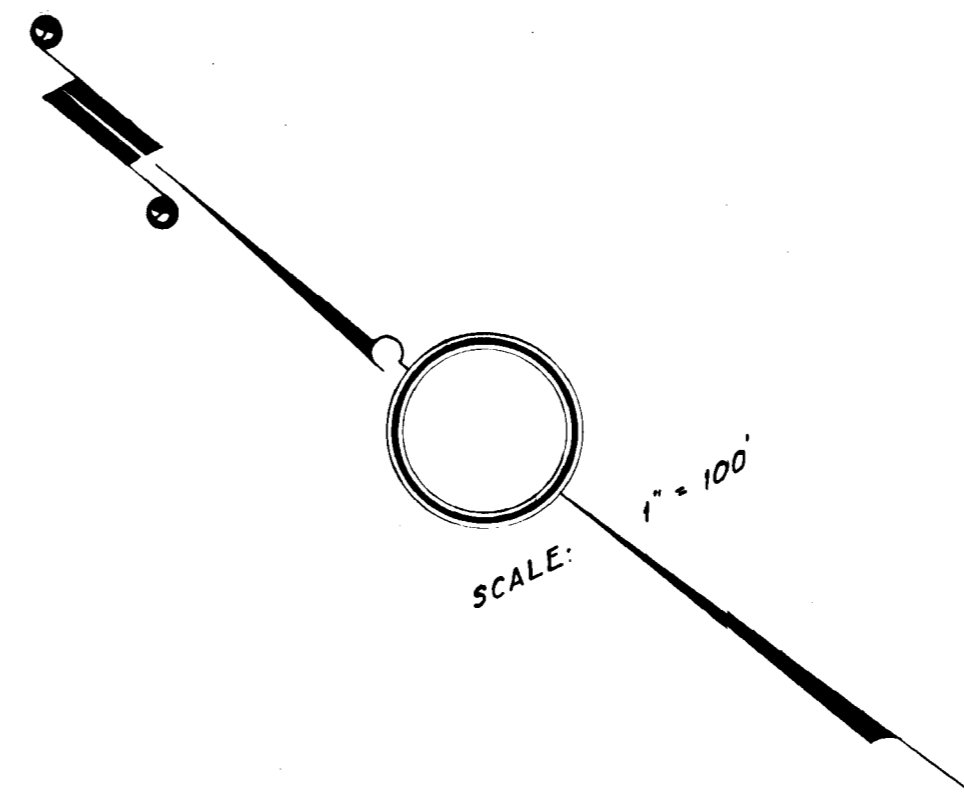


RECORD OF SURVEY  
 OF A PORTION OF TRACT 10, MYER'S  
 ADDITION TO OCEANSIDE, MAP No. 340,  
 IN THE CITY OF OCEANSIDE, COUNTY OF  
 SAN DIEGO, CALIFORNIA.



o = Set  $\frac{3}{4}$ " iron pipe marked "L.S. 2412"

SCALE: 1" = 100'

THE BASIS OF BEARINGS FOR THIS SURVEY IS center line of HILL STREET according to Record of Survey Map No 4110, i.e. N35°22'00"W

THIS MAP CORRECTLY REPRESENTS A SURVEY MADE BY ME OR UNDER MY DIRECTION IN CONFORMANCE WITH THE REQUIREMENTS OF CHAPTER 15 OF DIVISION 3 OF THE BUSINESS AND PROFESSIONS CODE AT THE REQUEST OF COPLEY PRESS, INC. of SAN DIEGO & by UNION-TRIBUNE

IN April 1962

*Ivan L. Nolan*  
 IVAN L. NOLAN  
 Licensed Land Surveyor No. 2412

THIS MAP HAS BEEN EXAMINED FOR CONFORMANCE WITH THE REQUIREMENTS OF CHAPTER 15 OF DIVISION 3 OF THE BUSINESS AND PROFESSIONS CODE THIS \_\_\_\_\_ DAY OF \_\_\_\_\_ 19\_\_\_\_

\_\_\_\_\_  
 COUNTY SURVEYOR  
 BY \_\_\_\_\_  
 CHIEF DEPUTY COUNTY SURVEYOR

FILE NO. \_\_\_\_\_  
 FILED FOR RECORD THIS \_\_\_\_\_ DAY OF \_\_\_\_\_ 19\_\_\_\_  
 AT \_\_\_\_\_ O'CLOCK \_\_\_\_\_ M. IN BOOK \_\_\_\_\_ OF \_\_\_\_\_  
 AT PAGE \_\_\_\_\_ AT THE REQUEST OF \_\_\_\_\_  
 FEE: \$ 5.00

A. S. GRAY  
 COUNTY RECORDER  
 BY \_\_\_\_\_  
 DEPUTY

APPROVED  
 Date: 4-26-62  
 By: *Alton F. Ruder*  
 City Engineer