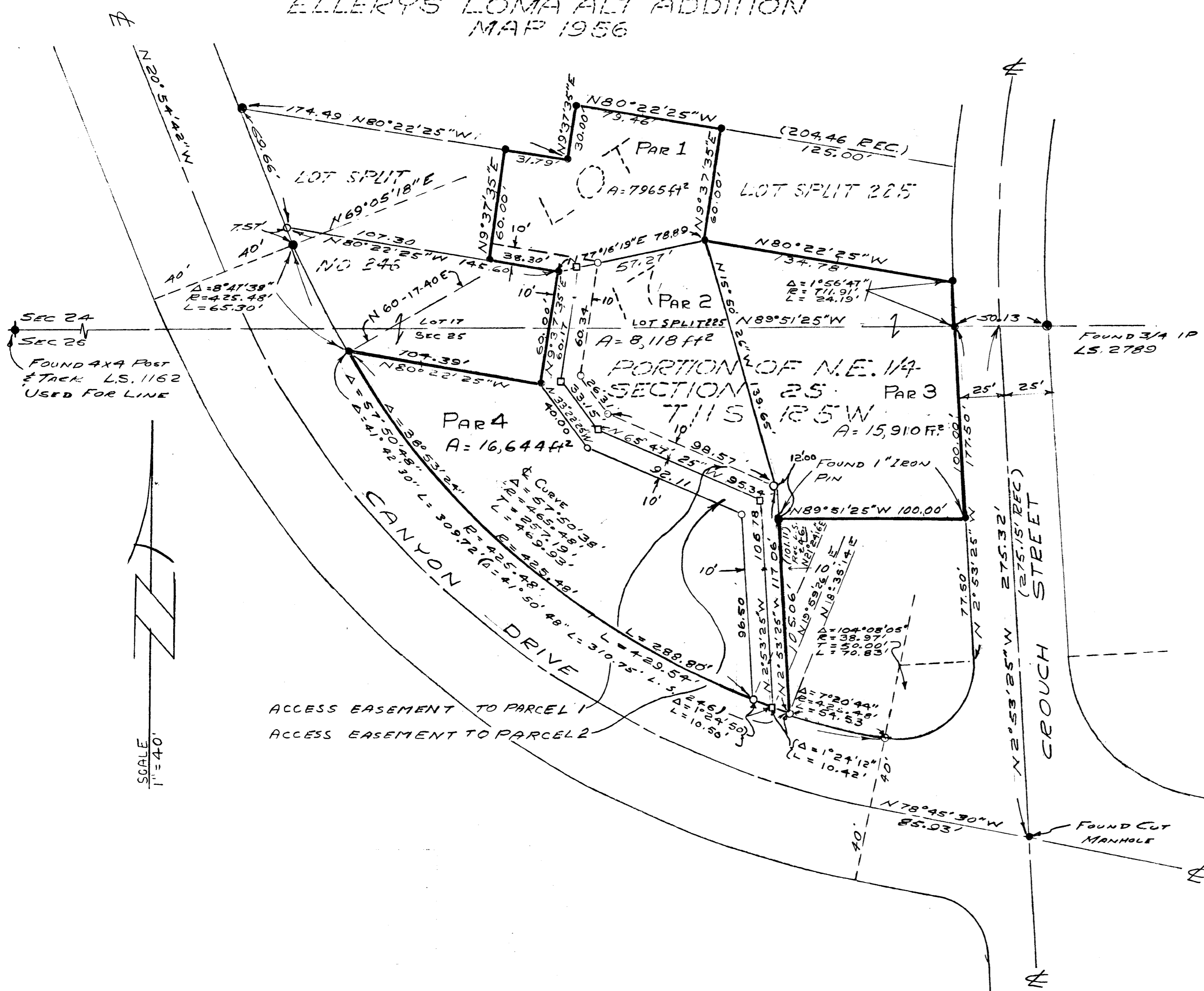


A PROPERTY SURVEY OF A PORTION OF LOT 17 OF ELLERY'S LOMA ALTA ADDITION MAP 1956, AND A PORTION OF THE N.E. 1/4 OF SEC. 25 T.11S., R.5W IN THE CITY OF OCEANSIDE, CALIFORNIA.

ELLERY'S LOMA ALTA ADDITION MAP 1956



LEGEND

- INDICATES 3/4 IRON PIPE TAGGED BCE 7604 OR TAGGED AS SHOWN
- INDICATES SET 3/4" IRON PIPE ETC.

NOTE:

THE BASIS FOR BEARINGS OF THIS SURVEY IS THE SOUTH LINE OF ELLERY'S LOMA ALTA ADDITION MAP 1956 I.E. N89°51'25"W. CORNERS SHOWN THUS ○ WILL BE SET WITHIN THIRTY (30) DAYS AFTER IMPROVEMENTS ARE COMPLETED.

APPROVED BY THE PLANNING COMMISSION
 this 16th day of Oct. 1961
 Resolution No. 61-P-1
 Secretary *Edward O. Taylor*

LOT SPLIT MAP FOR MRS. KAUB		
DRAWN EWH	STETSON STRAUSS & DRESSELHAUS INC.	DATE 9/7/61
CHECKED <i>M</i>	DONALD F. DRESSELHAUS BCE 7604	SCALE 1" = 40'
APPROVED	528 SOUTH HILL STREET OCEANSIDE CALIFORNIA SA-2-2126	SHEET

Alton S. Ruben
 ALTON L. RUBEN BCE 10163
 CITY ENGR.
 OCEANSIDE CALIFORNIA
 DATE 2-15-62 1961