

# LOT SPLIT MAP NO. 292

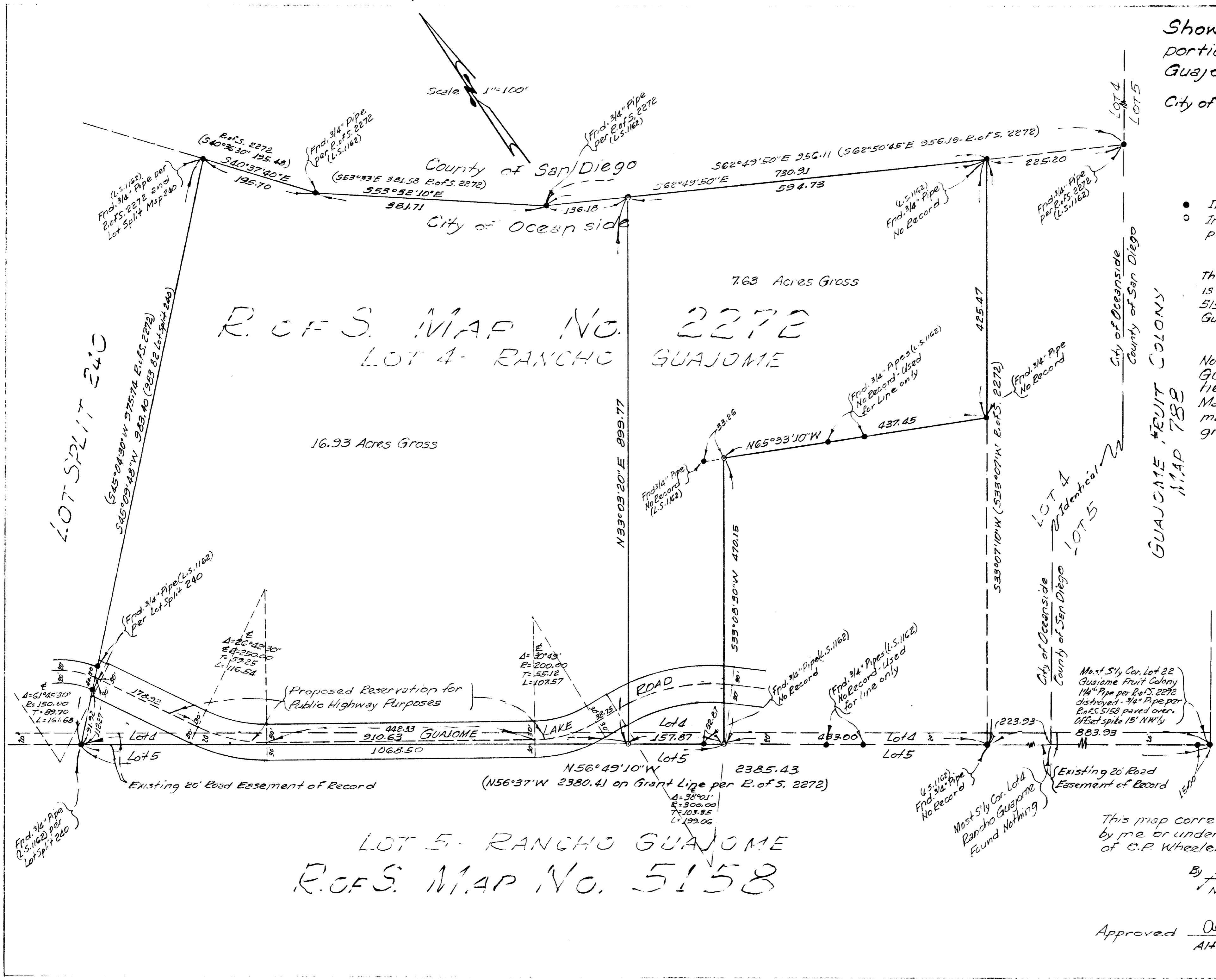
Showing a division of a portion of Lot 4 - Rancho Guajome - Partition Map - S.C.C. No. 10201 City of Oceanside - County of San Diego California

### LEGEND

- Indicates points found as noted.
- Indicates Set 3/4" Pipe with cement plug & brass disc marked "L.S. 1162"

The basis of bearings for this survey is the NELY boundary line of R.of S. 5158 (Line common to Lots 4 & 5 Rancho Guajome) Viz - N56°49'10"W

Note: Guajome Lake Road as shown hereon is taken from R.of S. Map No. 2272. No attempt was made to locate said road on the ground.



This map correctly represents a survey made by me or under my direction at the request of C.P. Wheeler in January, 1962

By A.P. Browne  
N.P. Browne - Browne & Vogt Inc.

Approved Alton L. Ruder 2-1-62  
Alton L. Ruder - P.C.E. 10163  
City Engineer