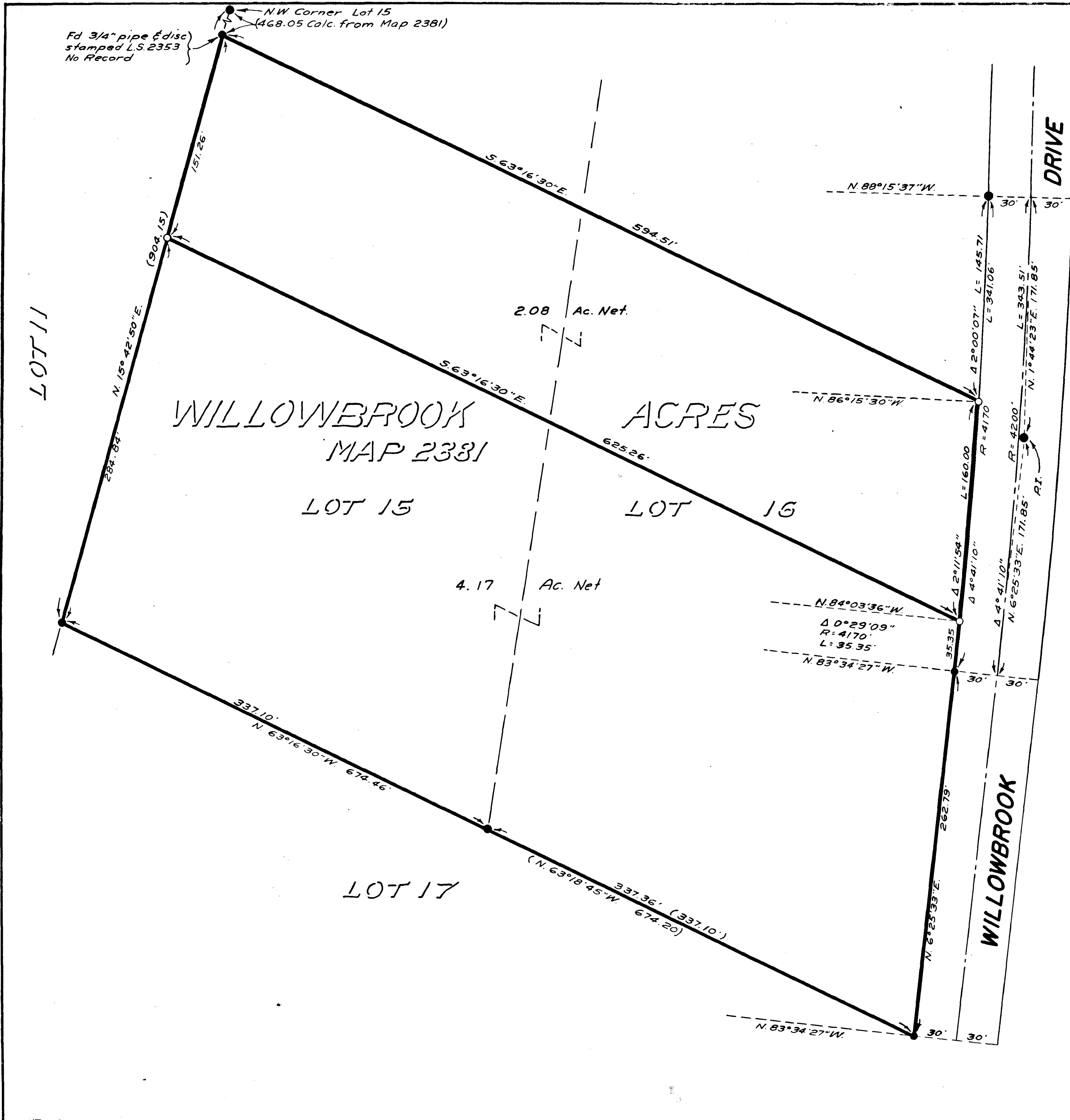


RECORD OF SURVEY OF A PORTION OF LOTS 15 & 16 OF WILLOWBROOK ACRES MAP 2381 COUNTY OF SAN DIEGO STATE OF CALIFORNIA



LEGEND:

- Indicates found 1" pipe & disc stamped R.E. 32 per Map 2381 except where otherwise noted.
○ Indicates points set with 1/2"x18" square pins stamped L.S. 2804.

All bearings and distances shown in parentheses are Record according to Willowbrook Acres, Map No 2381.

SCALE: 1" = 50'

THE BASIS OF BEARINGS FOR THIS SURVEY IS the Westerly side-line of WILLOWBROOK DRIVE adjacent to the South East corner of Lot 16; bearing N. 6°25'33"E. as shown on WILLOWBROOK ACRES, Map No 2381

THIS MAP CORRECTLY REPRESENTS A SURVEY MADE BY ME OR UNDER MY DIRECTION IN CONFORMANCE WITH THE REQUIREMENTS OF CHAPTER 15 OF DIVISION 3 OF THE BUSINESS AND PROFESSIONS CODE AT THE REQUEST OF SURETY BUILDERS

IN Oct 1961 Grady Boaz GRADY BOAZ, L.S. 2804

THIS MAP HAS BEEN EXAMINED FOR CONFORMANCE WITH THE REQUIREMENTS OF CHAPTER 15 OF DIVISION 3 OF THE BUSINESS AND PROFESSIONS CODE THIS DAY OF 19

COUNTY SURVEYOR BY CHIEF DEPUTY COUNTY SURVEYOR

11-8-61 Alton Riden

FILE NO. FILED FOR RECORD THIS DAY OF 19 AT O'CLOCK M. IN BOOK OF AT PAGE AT THE REQUEST OF GRADY BOAZ FEE: \$ 5.00

A. S. GRAY COUNTY RECORDER BY DEPUTY