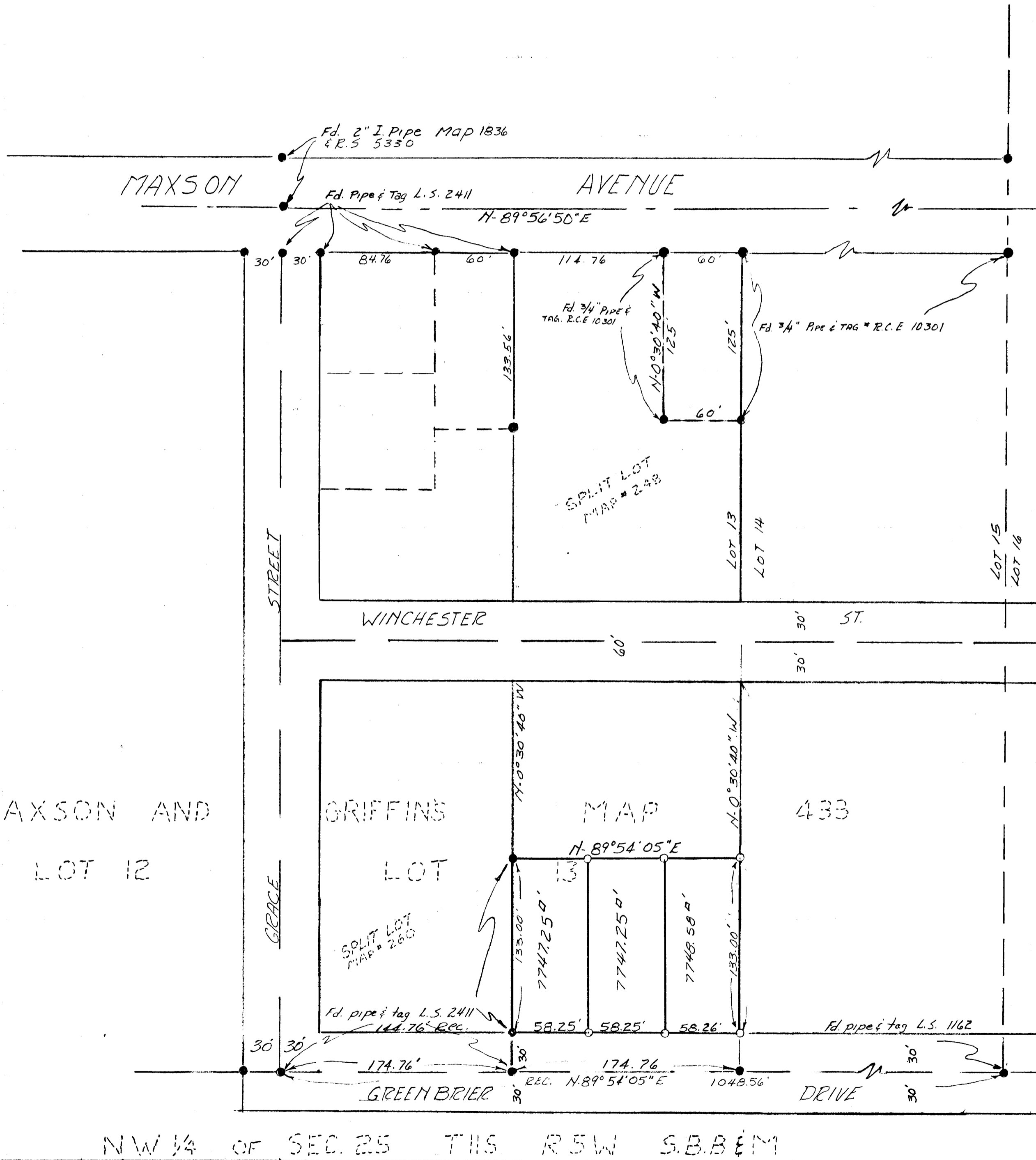


SPLIT LOT MAP N° 288



SCALE 1" = 60'

LEGEND
 ○ SET 3/4" IRON PIPE & TAG R.C.E-10301
 ● MONUMENTS FOUND

BASIS OF BEARINGS & OF MAXSON ST IS $N-89^{\circ}56'50"E$

APPROVED BY THE PLANNING COMMISSION
 this 21st day of Aug. 1961
 Resolution No. 61-P-72A
 Secretary *Ernest A. Taylor*

APPROVED
 Date 10-23-1961
 By *Alton S. Ruben*
 City Engineer

REQUESTED BY L. SWAIM
 CITY OF OCEANSIDE
 SURVEY OF PORTION OF ELY 1/2 OF LOT 13
 MAXSON & GRIFFIN'S SUB.
 MAP 433
 SOUTH COAST ENGINEERING SERVICE
William G. Coyer
 R.C.E. 10301
 Oct. 23, 1961
 DATE

MAXSON AND LOT 12

GRIFFIN'S LOT MAP 433

NW 1/4 OF SEC. 25 T15S R5W S.B.B. & M