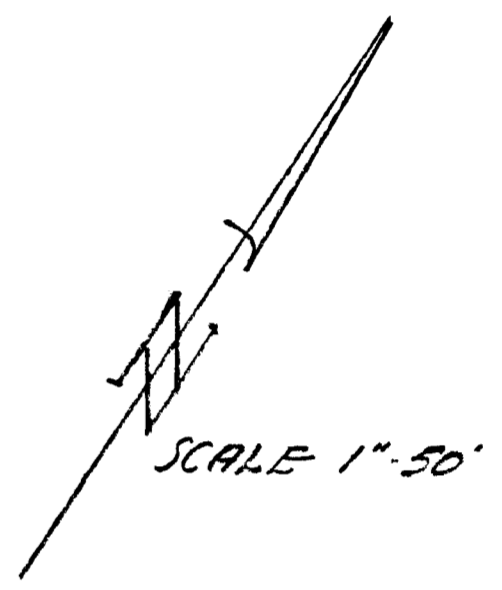
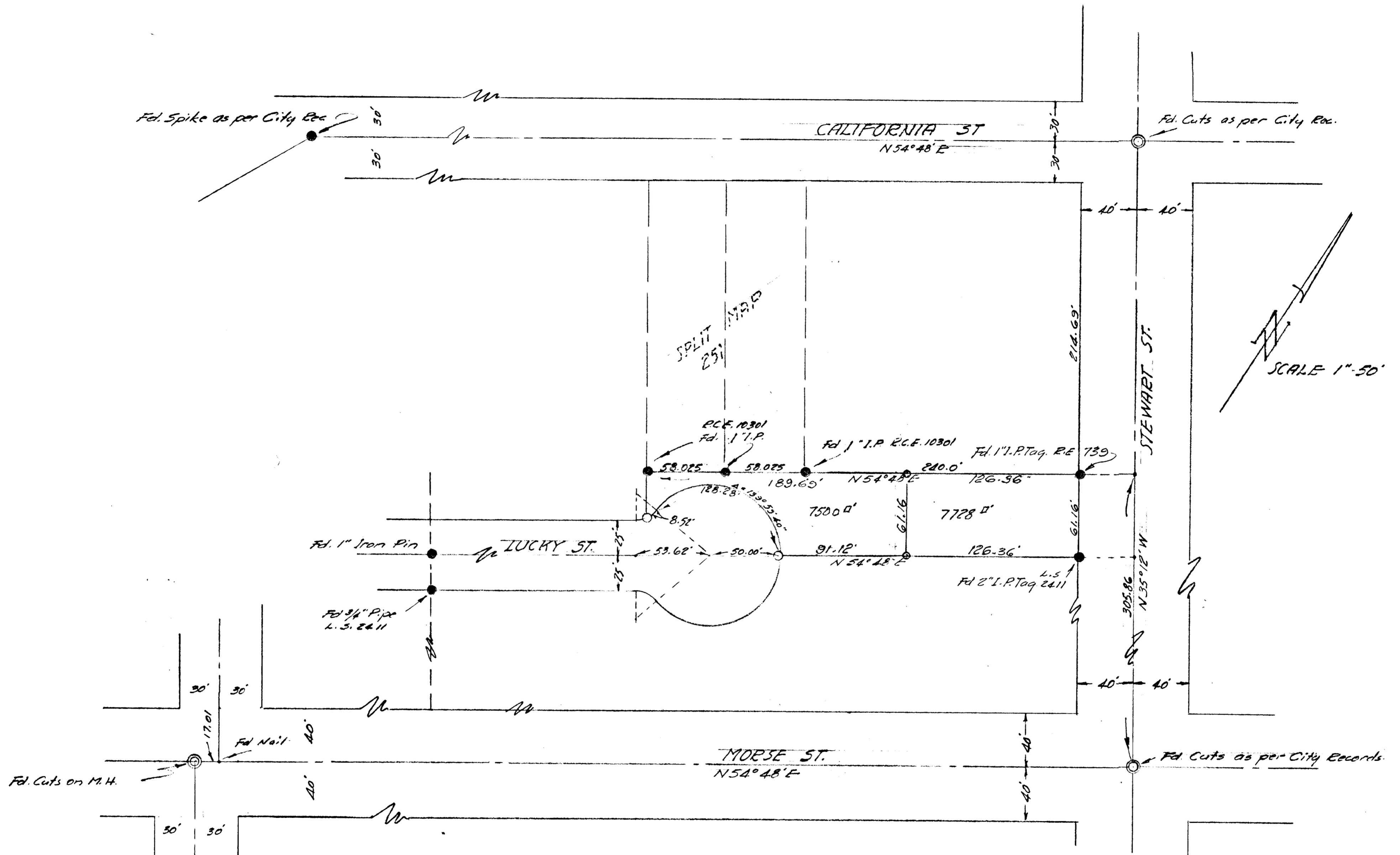


SPLIT LOT MAP N^o 287



BASIS OF BEARINGS
 E STEWART ST. AS PER MAP #1717
 I.E. N54°48'E

- Monuments found
- 3/4" I.P. Set with Tag, R.C.E. 10301

APPROVED
 11-10-67
 By Alton Puder
 City Engineer

REVISED: - E'ly Line of W'ly Por. 12-15-67
 CITY OF OCEANSIDE
 SURVEY OF A PORTION OF TR. 50
 HOTELING LANDS MAP N^o 1717
 Requested by P.B. PLYLER
 SOUTH COAST ENGINEERING SERV.
 William G. Cypert
 R.C.E. 10301
 OCT. 23, 1961.
 DATE