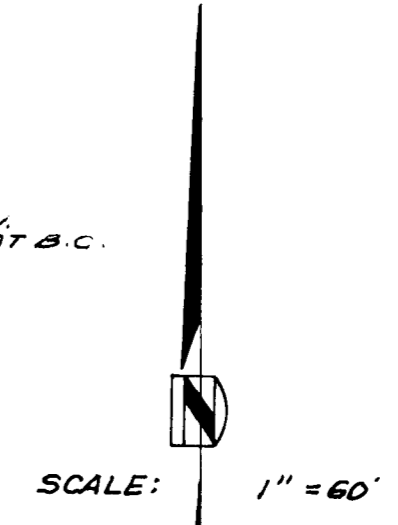
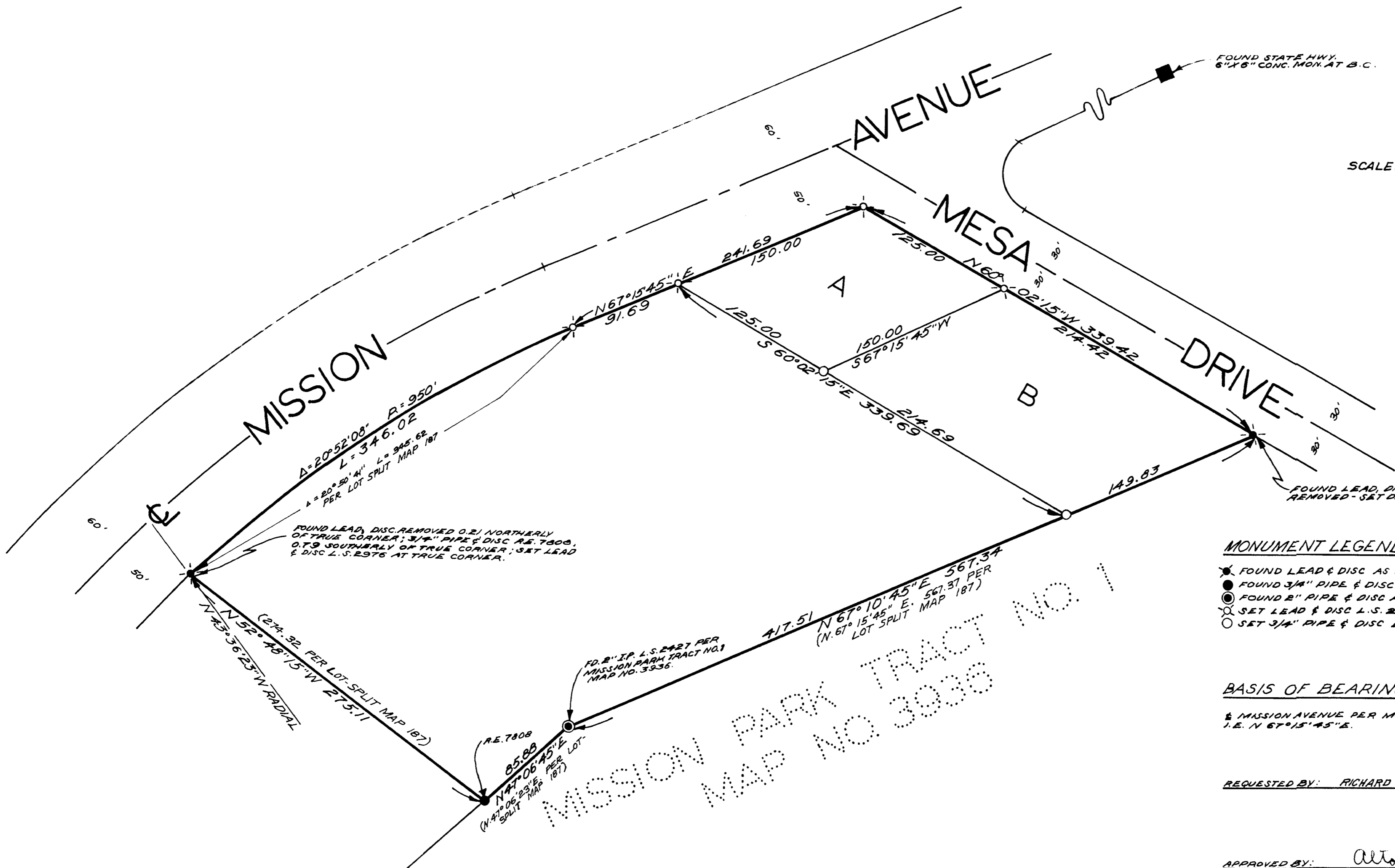


LOT SPLIT MAP



MONUMENT LEGEND:

- FOUND LEAD & DISC AS NOTED.
- FOUND 3/4" PIPE & DISC AS NOTED.
- FOUND 2" PIPE & DISC AS NOTED.
- SET LEAD & DISC L.S. 2976.
- SET 3/4" PIPE & DISC L.S. 2976.

BASIS OF BEARINGS:

& MISSION AVENUE PER MISSION PARK TRACT NO. 1, MAP NO. 3936
I.E. N 67° 15' 45" E.

REQUESTED BY: RICHARD WOOD

APPROVED BY: Alton L. Ruden 8-31-61
ALTON L. RUDEN R.C.E. 10163

LOT SPLIT IN THE CITY OF OCEANSIDE, COUNTY OF SAN DIEGO, STATE OF CALIFORNIA

BEING A PORTION OF LOTS 18, 21 & 22 TOGETHER WITH THE VACATED STREETS, ALL IN A PORTION OF OCEANSIDE (COMMONLY KNOWN AS BUTLER, GROVES AND GLEIGNER'S ADDITION) IN THE CITY OF OCEANSIDE ACCORDING TO MAP THEREOF NO. 391, FILED IN THE OFFICE OF THE COUNTY RECORDER OF SAN DIEGO COUNTY, LYING IN THE E 1/2 OF THE NW 1/4 OF SECTION 24, T. 11 S., R. 5 W., S.B.B. AND MERIDIAN.

Don Nasland



DON NASLAND
LICENSED LAND SURVEYOR
3913 ALABAMA ST. SAN DIEGO