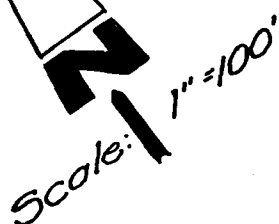


RECORD OF SURVEY

OF A PORTION OF LOTS 11, 12, 13, 14 AND 23, AND A PORTION OF VACATED MISSION AVENUE OF BUTLER, GROVES AND GLEICHNER'S ADDITION PER MAP NO 341 AND A PORTION OF THE SOUTH-WEST QUARTER OF THE NORTHWEST QUARTER OF SECTION 24, TOWNSHIP 11 SOUTH, RANGE 5 WEST, SAN BERNARDINO MERIDIAN, IN THE CITY OF OCEANSIDE, COUNTY OF SAN DIEGO, STATE OF CALIFORNIA.

JUNE 1961
PAFFORD & ASSOCIATES

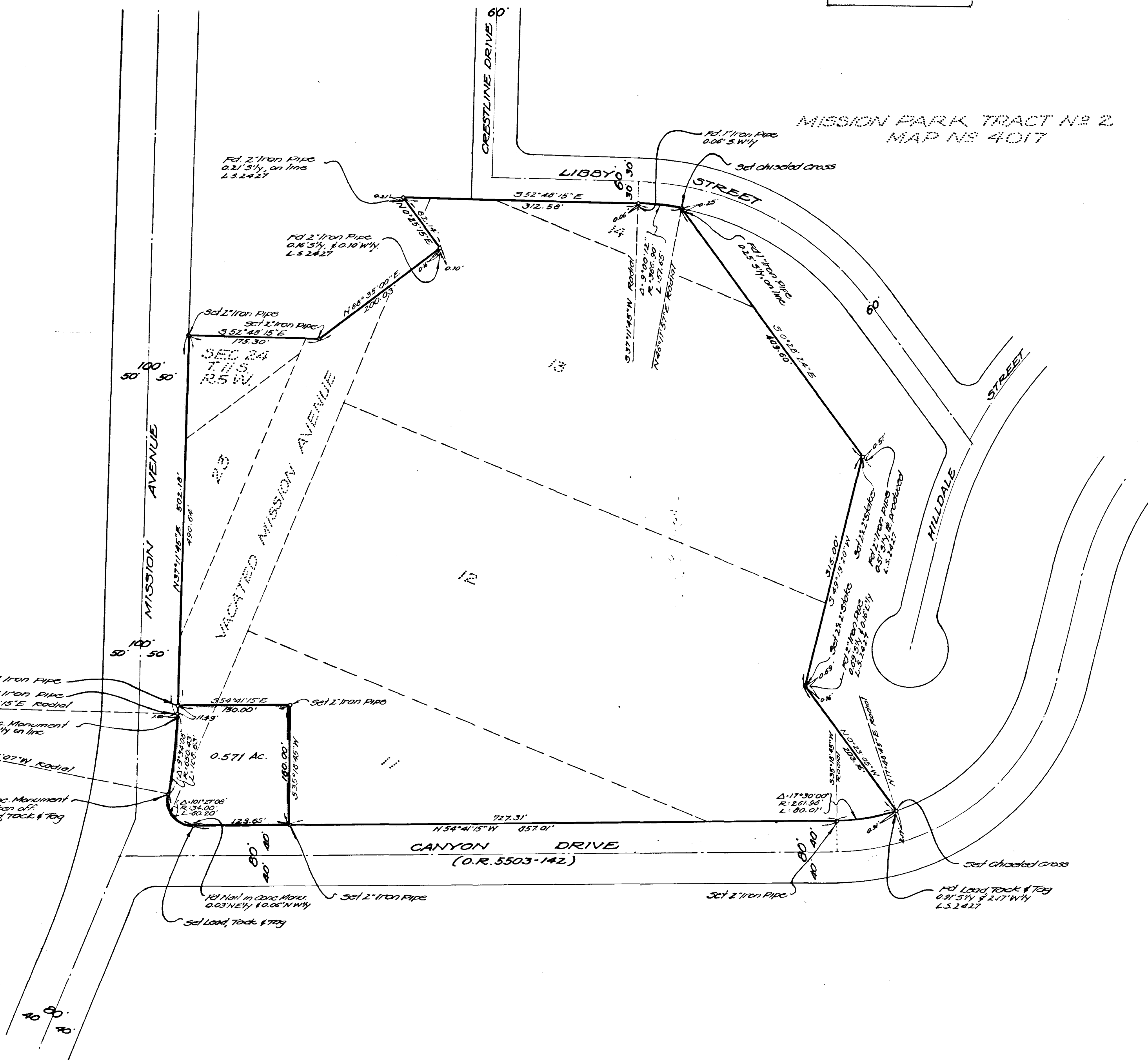
BASIS OF BEARINGS
Bearings shown hereon are based upon the centerline of Mission Avenue being N 37° 11' 45" E as shown on Mission Park Tract No 2, Map No 4017, in the City of Oceanside, County of San Diego.



SURVEYOR'S CERTIFICATE
This map correctly represents a survey made by me or under my direction in conformance with the requirements of Chapter 15 of Division 3 of the Business and Professions Code of the request of VISION OIL COMPANY OF CALIFORNIA in June, 1961
F.W.P.
Licensed Surveyor No 2333

All set 2" Iron Pipe tagged L.S. 2333.

APPROVED
Date: Aug 7, 1961
By: *Alton J. Rulen*
City Engineer



Revision 011

15-761