

LOT SPLIT MAP NO. 280

of a portion of the
N.E. 1/4 of the S.E. 1/4
SECTION 24-T.11S, R.5W,
S.B.B.&M.
in the City of Oceanside, County
of San Diego, California
Scale 1"=40'

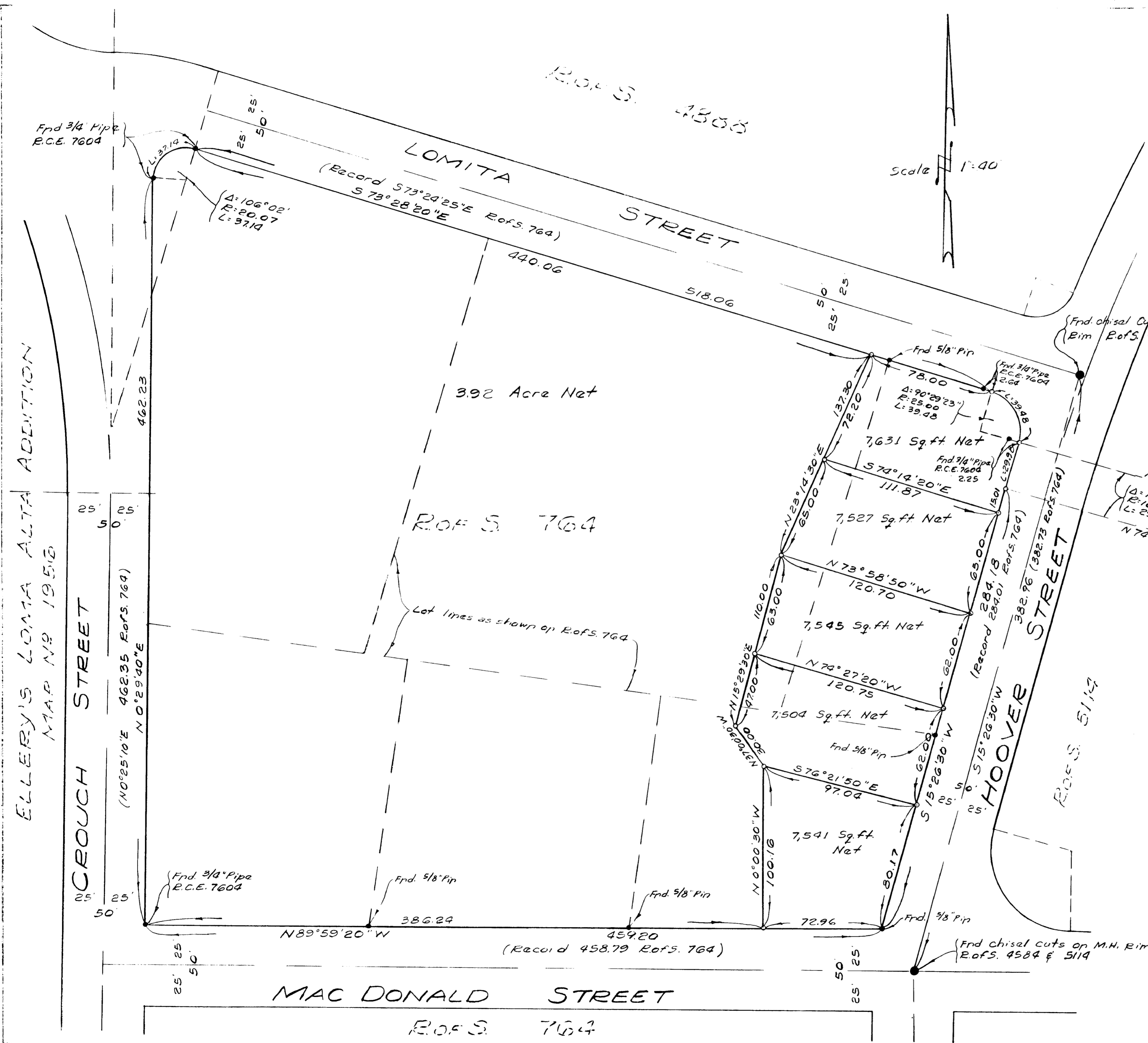
- Legend:
- Indicates found as noted.
 - Indicates set 3/4" Pipe with cement plug & brass disc stamped "E.E. 4968."

The basis of bearings for this survey is the centerline of Hoover Street as shown on Rofs. 764 & Rofs. 5114-V-3-515°26'30"W

This map correctly represents a survey made by me or under my direction at the request of Mrs. Muriel J. Engabratson in May 1961.

John H.L. Vogt
John H.L. Vogt (E.E. 4968)

Approved Alton & Ruder
Alton L. Ruder R.C.E. 10163
City Engineer



ELLERY'S LOMITA ALTA ADVENTION
MAP NO. 1951B

10:280

Muriel J. Engabratson 15A