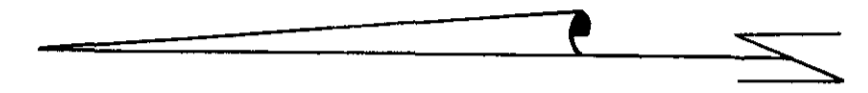


**RECORD OF SURVEY**  
 OF A PORTION OF LOT 13 OF MAXSON AND GRIFFIN'S  
 SUBDIVISION OF TYSON TRACT, MAP 433, OCEANSIDE,  
 CALIFORNIA



SCALE: 1" = 40'

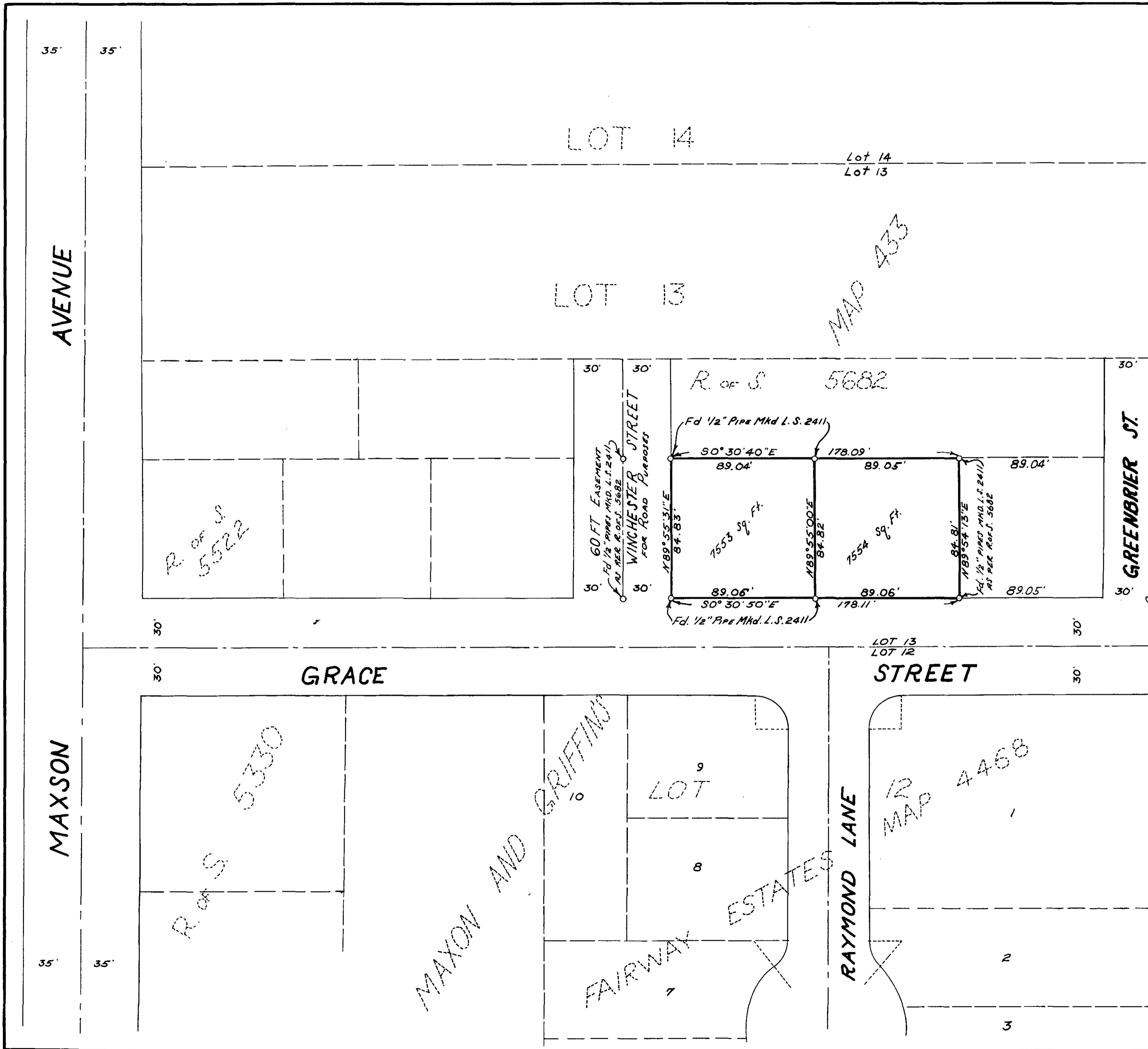
THE BASIS OF BEARING FOR THIS SURVEY IS THE  
 WEST LINE OF LOT 13 AS SHOWN ON R.O.S. 5522  
 I.E. N<sup>o</sup> 0° 30' 50" W

THIS MAP CORRECTLY REPRESENTS A SURVEY MADE BY  
 ME OR UNDER MY DIRECTION IN CONFORMANCE WITH  
 THE REQUIREMENTS OF CHAPTER 15 OF DIVISION 3 OF THE  
 BUSINESS AND PROFESSIONS CODE AT THE REQUEST OF  
 REN K. CASTNER IN FEBRUARY, 1961

*Gustav J. Kamptner*  
 L.S. 2789

APPROVED  
 Date: *April 11, 1961*  
 By: *Alton S. Ruder*  
 City Engineer

16-25-965



*Ren K. Castner*