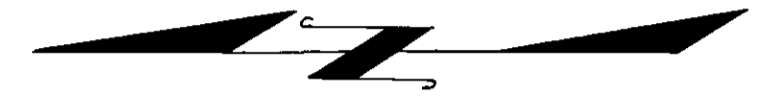


RECORD OF SURVEY
 OF A PORTION OF LOT 13 OF MAXSON AND
 GRIFFIN'S SUBDIVISION OF TYSON TRACT, MAP
 433, OCEANSIDE CALIFORNIA



SCALE
 1" = 40'

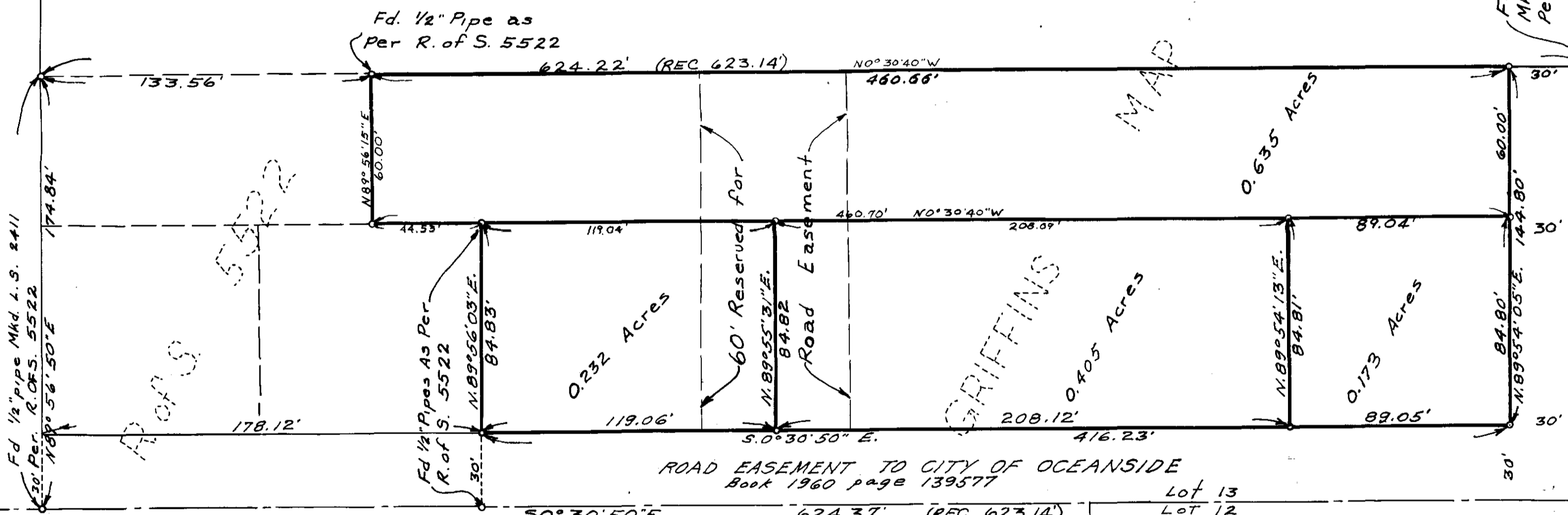
AVENUE

MAXSON

LOT 14

LOT 13

Lot 14
 Lot 13



T.I.S. R.5.W. S.B.M.
 N.W. 1/4 OF SEC. 25

NOTE:- SET 1/2" PIPE AND COPPER DISCS MARKED L.S. 2411 AT ALL POINTS INDICATED THUS O UNLESS OTHERWISE NOTED

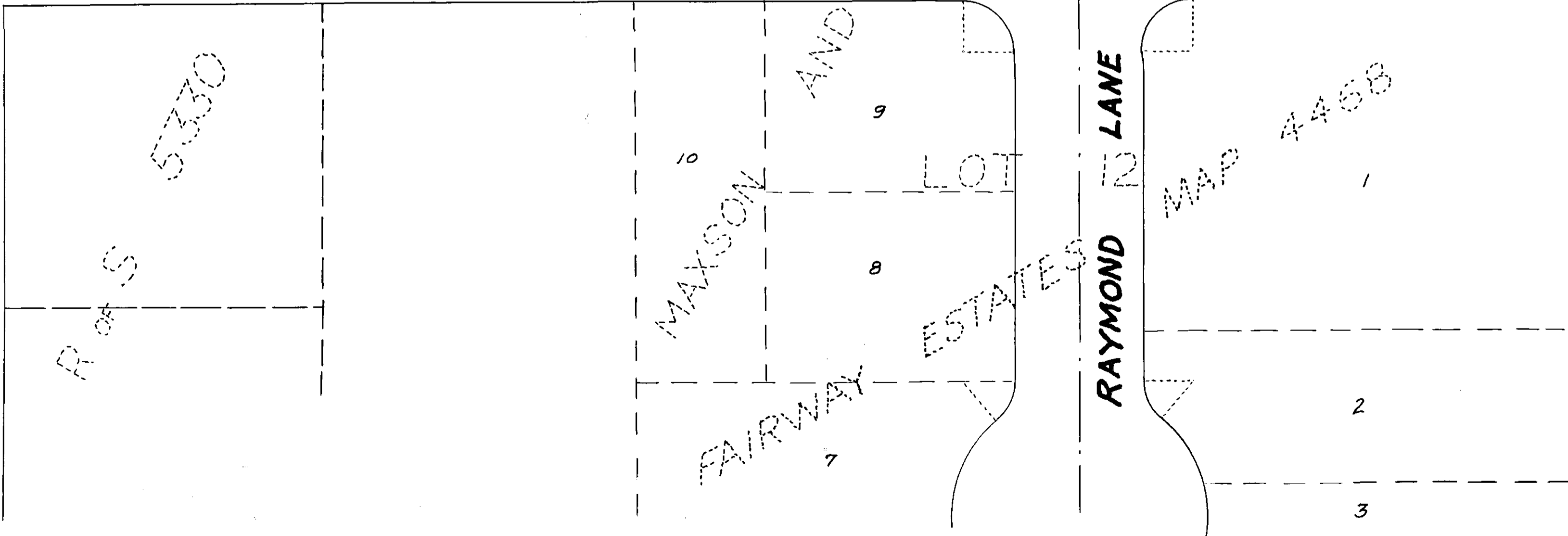
THE BASIS OF BEARING FOR THIS SURVEY IS THE WEST LINE OF LOT 13 AS SHOWN ON R.O.F.S. 5522 i.e. N 0° 30' 50" W

THIS MAP CORRECTLY REPRESENTS A SURVEY MADE BY ME OR UNDER MY DIRECTION IN CONFORMANCE WITH THE REQUIREMENTS OF CHAPTER 15 OF DIVISION 3 OF THE BUSINESS AND PROFESSIONS CODE AT THE REQUEST OF REN K. CASTNER IN AUGUST 1960

James A. Isbell
 L.S. 2411

GRACE

STREET



APPROVED
 Nov. 23 1960
 Alton J. Ruden
 City Engineer

Fd 2" Pipe and Disc.
 MKd. L.S. 2789 Replacing
 1/2" Pipe Shown on R.O.F.S. 5522

Paul Jackson 15-60