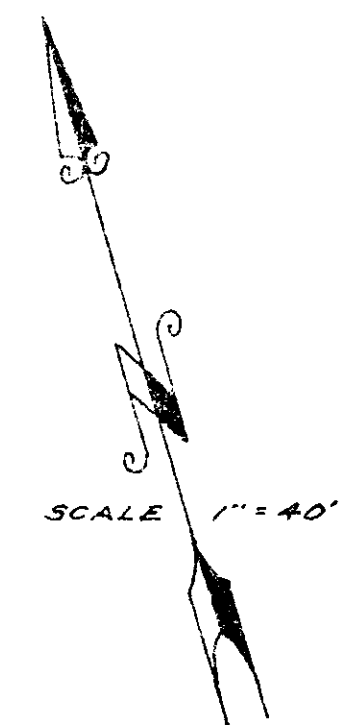
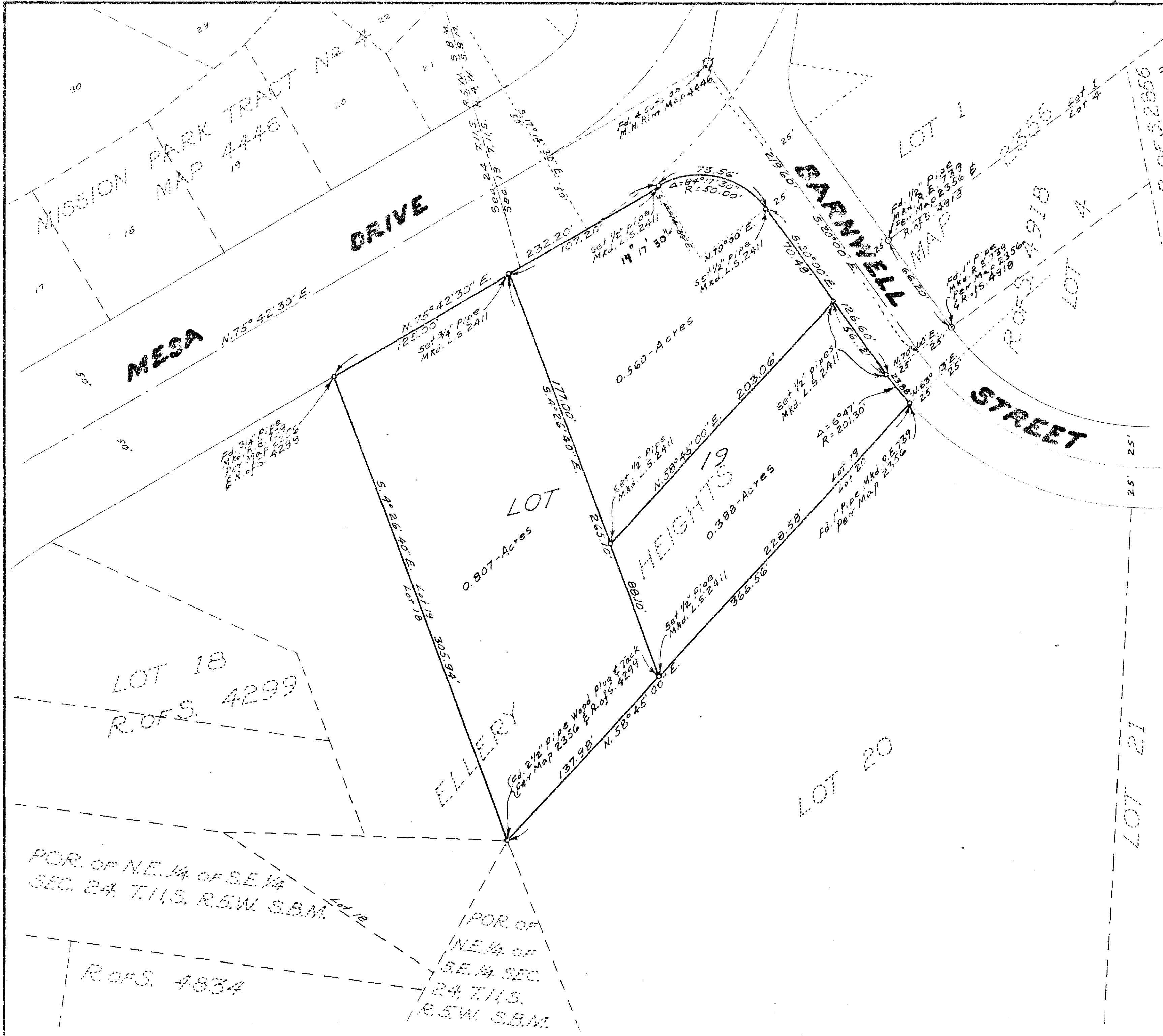


RECORD OF SURVEY

OF LOT 19 OF ELLERY HEIGHTS MAP No. 2356
OCEANSIDE CALIFORNIA



THE BASIS OF BEARINGS FOR THIS SURVEY IS THE CENTERLINE OF MESA DRIVE AS SHOWN ON SHEET 3 OF ELLERY HEIGHTS MAP No. 2356 OCEANSIDE CALIFORNIA I. E. N. 75° 42' 30" E.

THIS MAP CORRECTLY REPRESENTS A SURVEY MADE BY ME OR UNDER MY DIRECTION IN CONFORMANCE WITH THE REQUIREMENTS OF CHAPTER 15 DIVISION 3 OF THE BUSINESS AND PROFESSIONS CODE AT THE REQUEST OF W. G. GODKIN IN AUGUST 1960

James A. Isbell
L.S. 2411

APPROVED
Feb 2 - 15 - 61
Alton & Ruden

POR. OF NE. 1/4 OF SE. 1/4
SEC. 24, T.11S. R.5W. S.B.M.

POR. OF
NE. 1/4 OF
SE. 1/4 SEC.
24 T.11S.
R.5W. S.B.M.