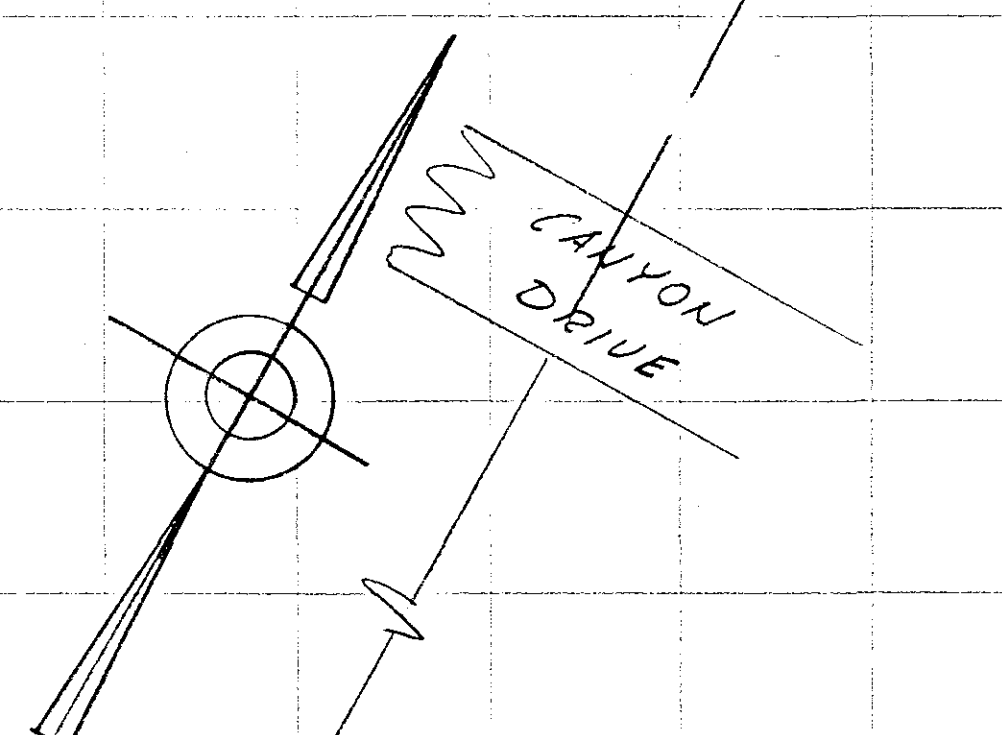
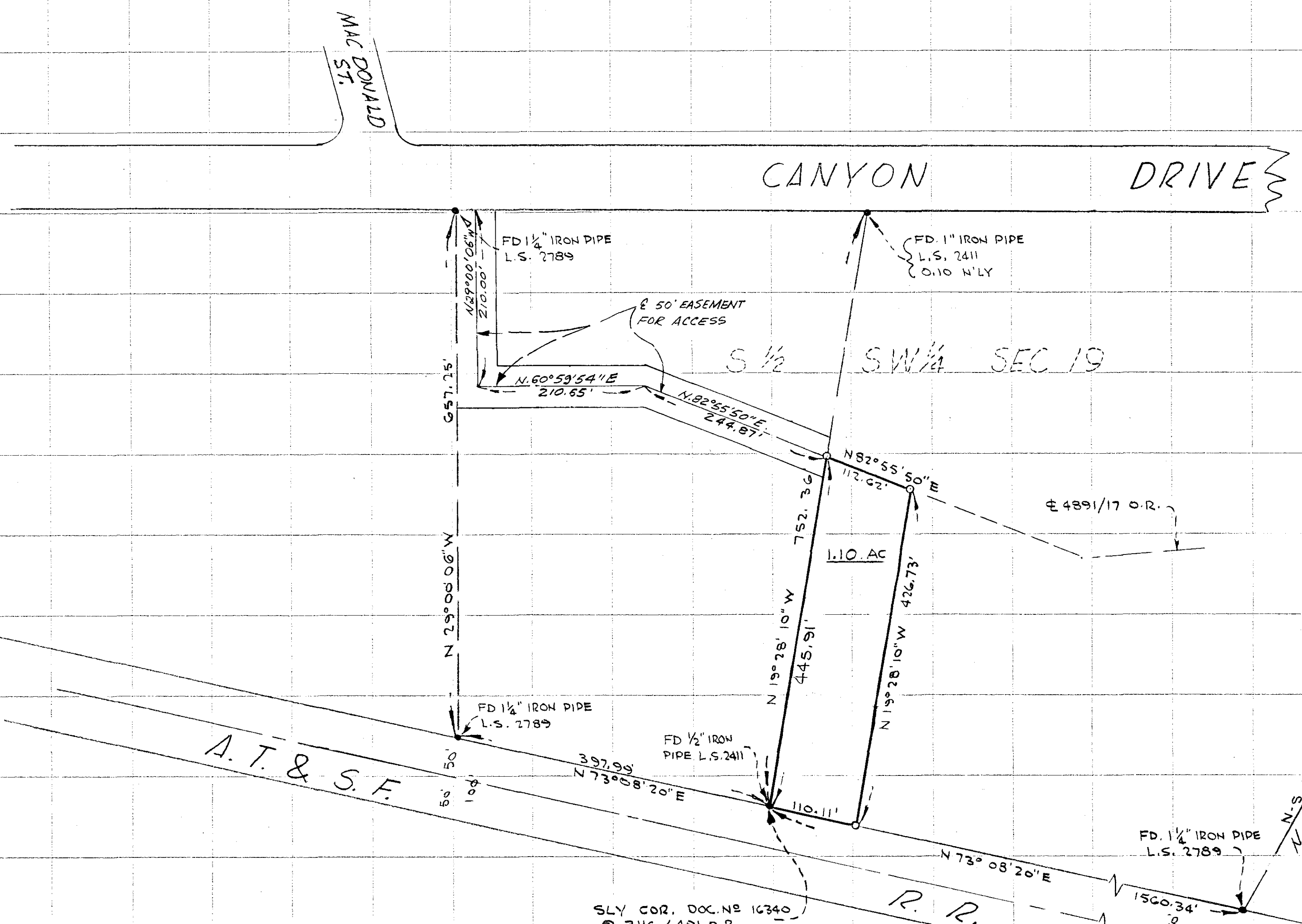


SPLIT LOT SURVEY

OF A PORTION OF THE S 1/2 OF THE S 1/4 SECTION 19, T11S, R4W S.B.M.

CITADEL ESTATES
UNIT NO 1
MAP NO 4049



APPROVED BY THE
PLANNING COMMISSION
this 1st day of Aug 1960
Resolution No. 60-P65
Secretary *A.M. Bagley*

APPROVED:
Detton & Ruden Aug. 10, 1960
OCEANSIDE CITY ENG.
A. L. RUDEN R.C.E. 10153

LOT SPLIT		
PREPARED FOR KENNETH NILL		
DRAWN D.H.H.	KAMPTNER & HOLLY - SURVEYORS	DATE 8-4-60
CHECKED G.J.K.	<i>Gustav J. Kamptner</i> GUSTAV J. KAMPTNER L.S. 2789	SCALE 1"=100'
APPROVED G.J.K.	2601 STATE STREET CARLSBAD, CALIFORNIA PARWAY - 9-108	SHEET 1

THIS MAP CORRECTLY REPRESENTS A SURVEY MADE UNDER MY SUPERVISION IN CONFORMANCE WITH THE REQUIREMENTS OF CHAPTER 15, DIVISION 3 OF THE BUSINESS AND PROFESSIONS CODE AT THE REQUEST OF KENNETH NILL JULY, 1960

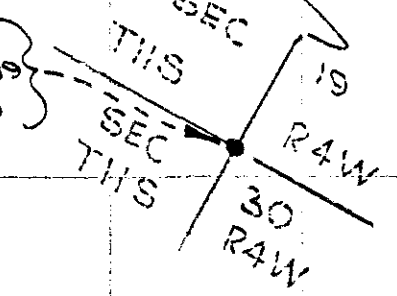
Gustav J. Kamptner
GUSTAV J. KAMPTNER L.S. 2789

NOTE - CORNER MONUMENTS AS INDICATED WILL BE SET BY ME WITHIN 30 DAYS FROM THE DATE OF APPROVAL OF THIS MAP BY THE CITY OF OCEANSIDE.

- LEGEND.
- MONUMENTS FOUND AS INDICATED
 - MONUMENTS SET: 1" IRON PIPE TAGGED L.S. 2789

BASIS OF BEARINGS - THE NORTH & SOUTH OF SEC 19 T11S R4W S1/4 SHOWN AS N 0° 21' 00" E ON MAP NO. 4049

FD 2" IRON PIPE PER L.S. MAP 3897 S 1/4 COR SEC. 19



SLY COR. DOC. NO 16340 @ 3116 / 491 O.R.