

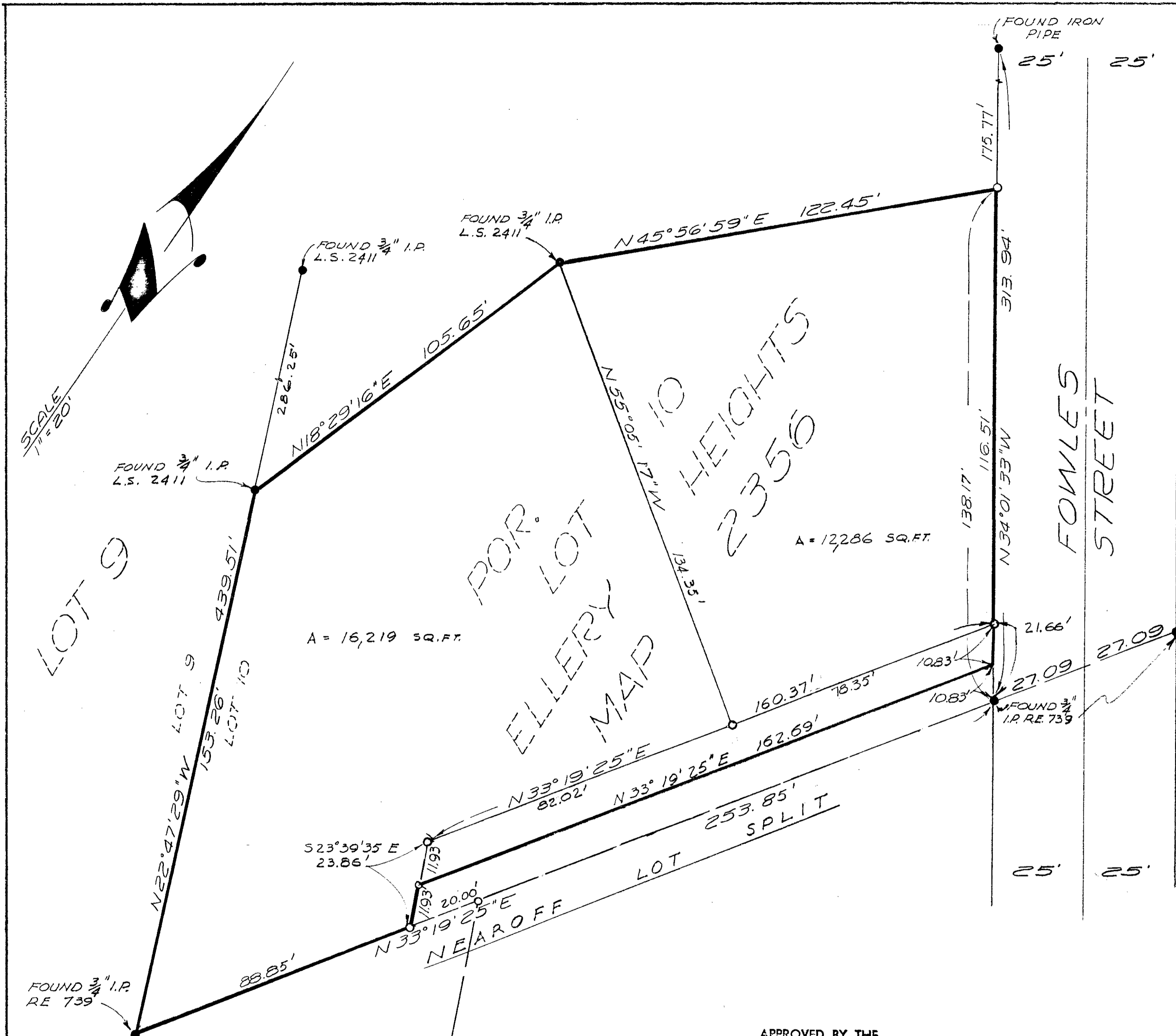
LOT SPLIT MAP # 252

A PROPERTY SURVEY OF A PORTION OF LOT 10, ELLERY HEIGHTS MAP 2356, IN THE CITY OF OCEANSIDE, CALIF.

LEGEND

- INDICATES SET 3/4" IRON PIPE TAGGED RCE 7604
- INDICATES FOUND AS SHOWN

THE BASIS FOR BEARINGS FOR THIS SURVEY IS THE SOUTHERLY LINE OF LOT 10 OF ELLERY'S LOMA ALTA ADDITION ACCORDING TO MAP THEREOF NO. 2356 i.e. N 33° 19' 25"



APPROVED BY THE PLANNING COMMISSION
 this 15th day of Feb. 1960
 Resolution No. 60-P18
 Secretary *[Signature]*

Alton & Ruben
 ALTON L. RUBEN, RCE 10163
 OCEANSIDE CITY ENG.
 July 29 1960
 DATE

LOT SPLIT MAP		
FOR MR LIGHTHALL		
DRAWN <i>[Signature]</i>	STETSON, STRAUSS & DRESSSELHAUS, INC. <i>[Signature]</i>	DATE 1-13-60
CHECKED <i>[Signature]</i>	RCE 7604	SCALE 1" = 20'
APPROVED	528 SO. HILL STREET OCEANSIDE, CALIF. PH. 5A-2-2126	SHEET 1 OF 1

15-3 Lighthall SUR 59-133 2-1166 15-A