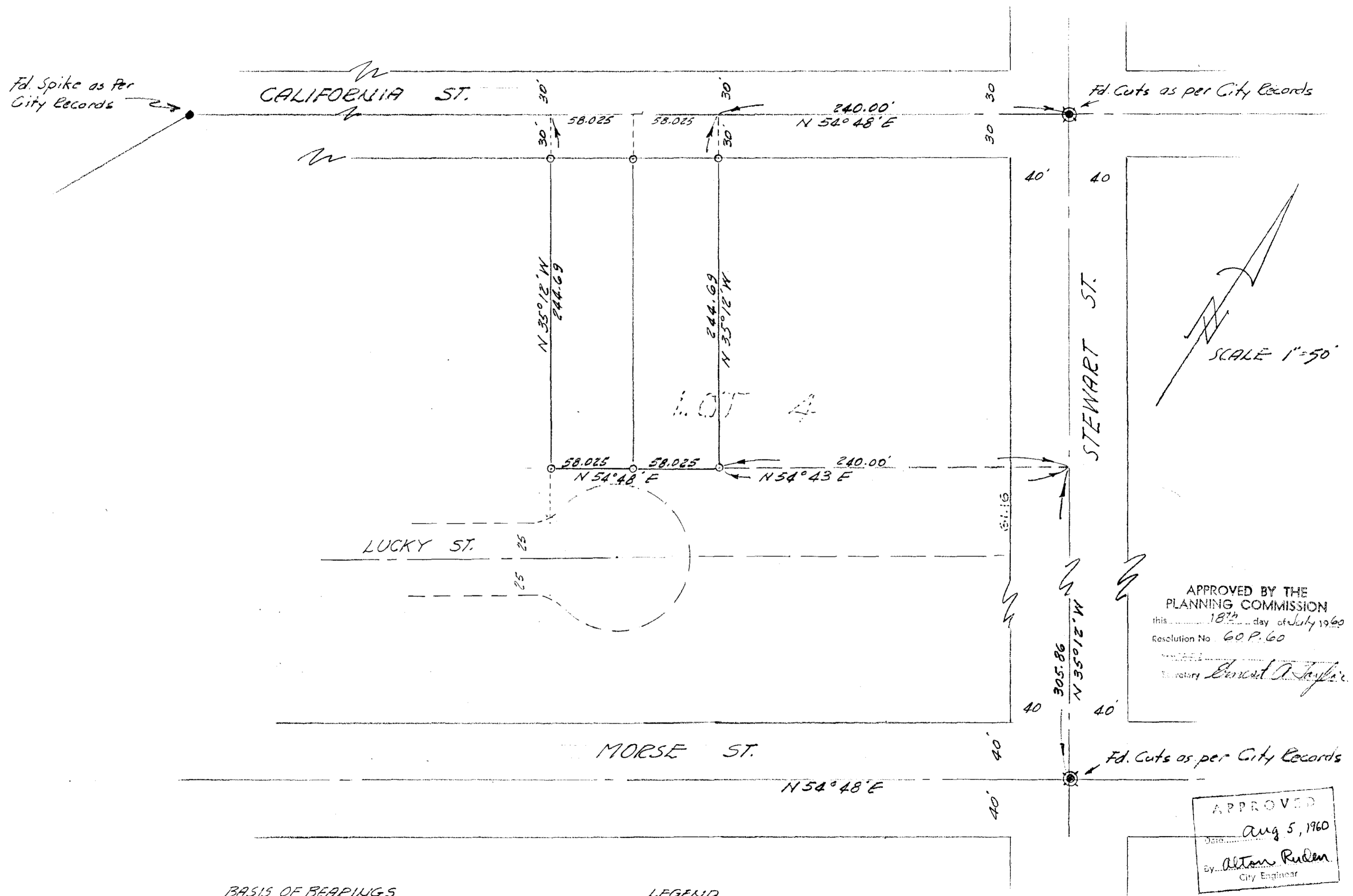


SPLIT LOT MAP NO 251



APPROVED BY THE
 PLANNING COMMISSION
 this 18th day of July 1960
 Resolution No 60 P. 60
 Secretary *Ernest A. Taylor*

APPROVED
 Date Aug 5, 1960
 by *Alton Rulen*
 City Engineer

BASIS OF BEARINGS
 @ STEWART ST. AS PER MAP #1717
 i.e. N 35° 12' W

LEGEND
 ● Monuments Found
 ○ 1" Iron Pipe Set with Tag R.C.E 10301

CITY OF OCEANSIDE
 SURVEY OF A PORTION OF TR. 50
 HOTELING LANDS MAP NO 1717
 Requested by SCOTCH CONST. CO.
 SOUTH COAST ENGINEERING SERVICE
William C. Cunn 8/2/60
 R.C.E. 10301 DATE

(Mondragon) 15-251 15-77