

RECORD OF SURVEY
OF A PORTION OF LOT 13 OF MAXSON AND
GRIFFIN'S SUBDIVISION OF TYSON TRACT, MAP
433, OCEANSIDE CALIFORNIA

SCALE
1" = 60'

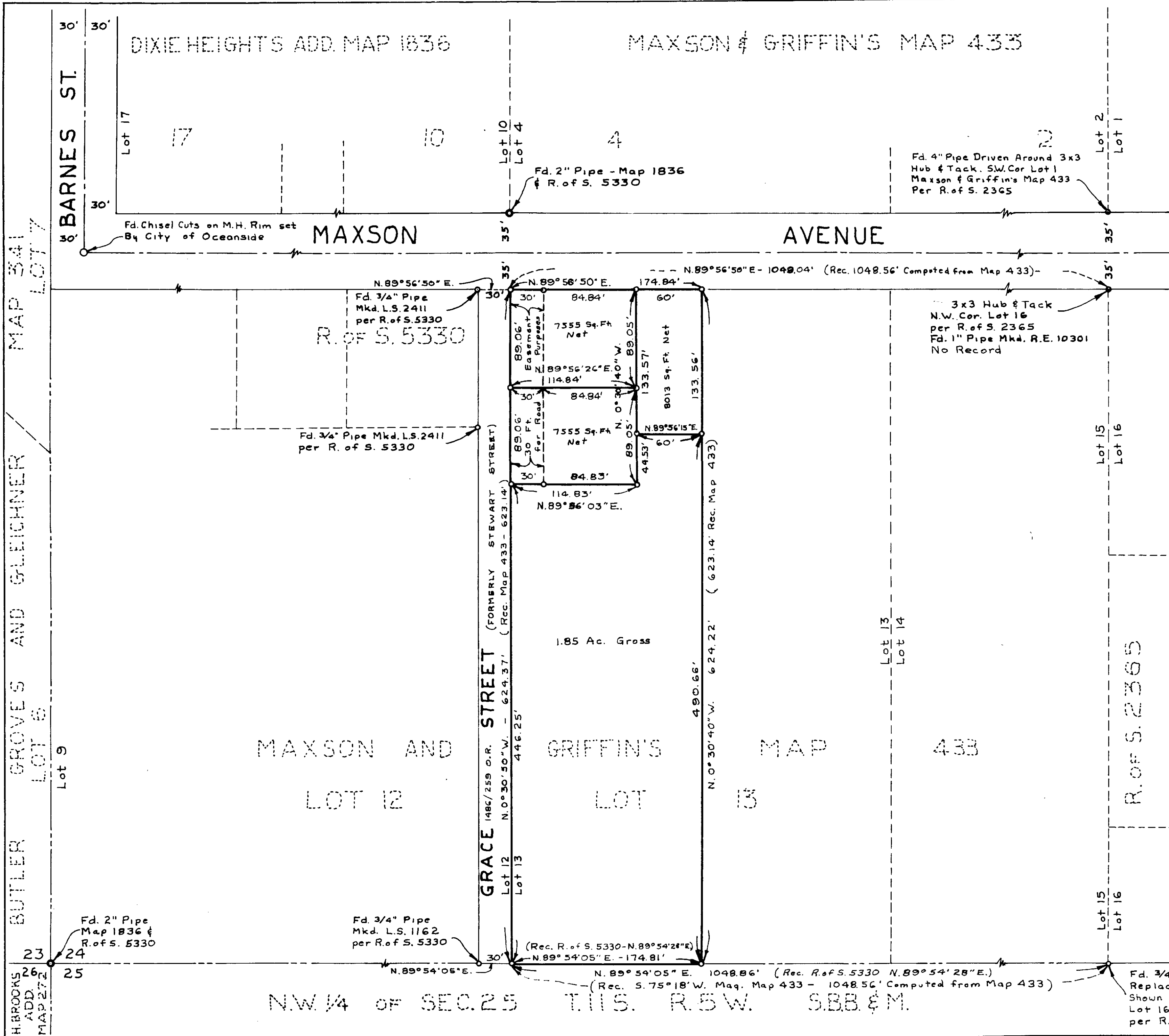
NOTE:- SET 1/2" PIPE AND COPPER DISCS MARKED
L.S.2411 AT ALL POINTS INDICATED THUS O
UNLESS OTHERWISE NOTED

THE BASIS OF BEARING FOR THIS SURVEY IS THE
NORTH LINE OF MAXSON AVENUE AS SHOWN ON
MAP 1836 i.e. N. 89° 56' 50" E.

THIS MAP CORRECTLY REPRESENTS A SURVEY MADE BY
ME OR UNDER MY DIRECTION IN CONFORMANCE WITH
THE REQUIREMENTS OF CHAPTER 15 OF DIVISION 3 OF
THE BUSINESS AND PROFESSIONS CODE AT THE REQUEST
OF J. R. RAMBERG IN APRIL 1960

James A. Sebell
L.S. 2411

APPROVED
OCT 10-5-60
Alton & Ruden
C.S. 2012



N.W. 1/4 OF SEC. 25 T.11S. R.5W. S.B.B. & M.

J.P. [unclear] 10-20-60/15-4