

REVERSE LOT SPLIT MAP 249

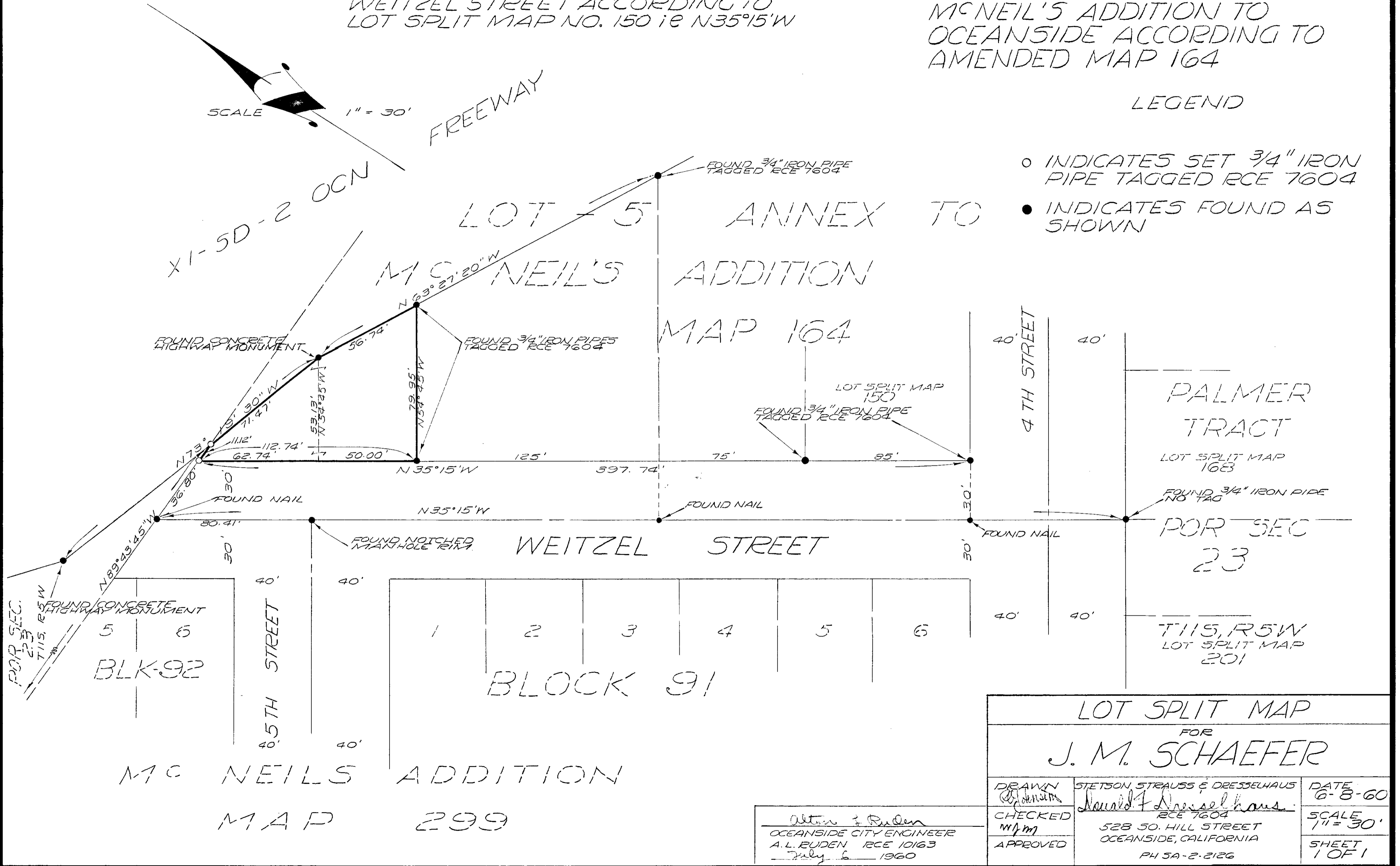
BASIS OF BEARINGS OF THIS SURVEY IS THE CENTER LINE OF WEITZEL STREET ACCORDING TO LOT SPLIT MAP NO. 150 i.e. N35°15'W

A PROP SURVEY OF A PORTION OF LOT 5 OF ANNEX TO MCNEIL'S ADDITION TO OCEANSIDE ACCORDING TO AMENDED MAP 164

SCALE 1" = 30'

LEGEND

- INDICATES SET 3/4" IRON PIPE TAGGED RCE 7604
- INDICATES FOUND AS SHOWN



LOT SPLIT MAP FOR J. M. SCHAEFER		
DRAWN <i>[Signature]</i>	STETSON STRAUSS & DRESSELHAUS <i>Donald F. Dresselhaus</i>	DATE 6-8-60
CHECKED WJM	RCE 7604 528 50. HILL STREET OCEANSIDE, CALIFORNIA	SCALE 1" = 30'
APPROVED	PH 5A-2-2126	SHEET 1 OF 1

Alton & Ruden
OCEANSIDE CITY ENGINEER
A.L. RUDEN RCE 10163
July 6 1960

MC NEILS ADDITION MAP 299

[Signature] 2-1318 15-A
15-211