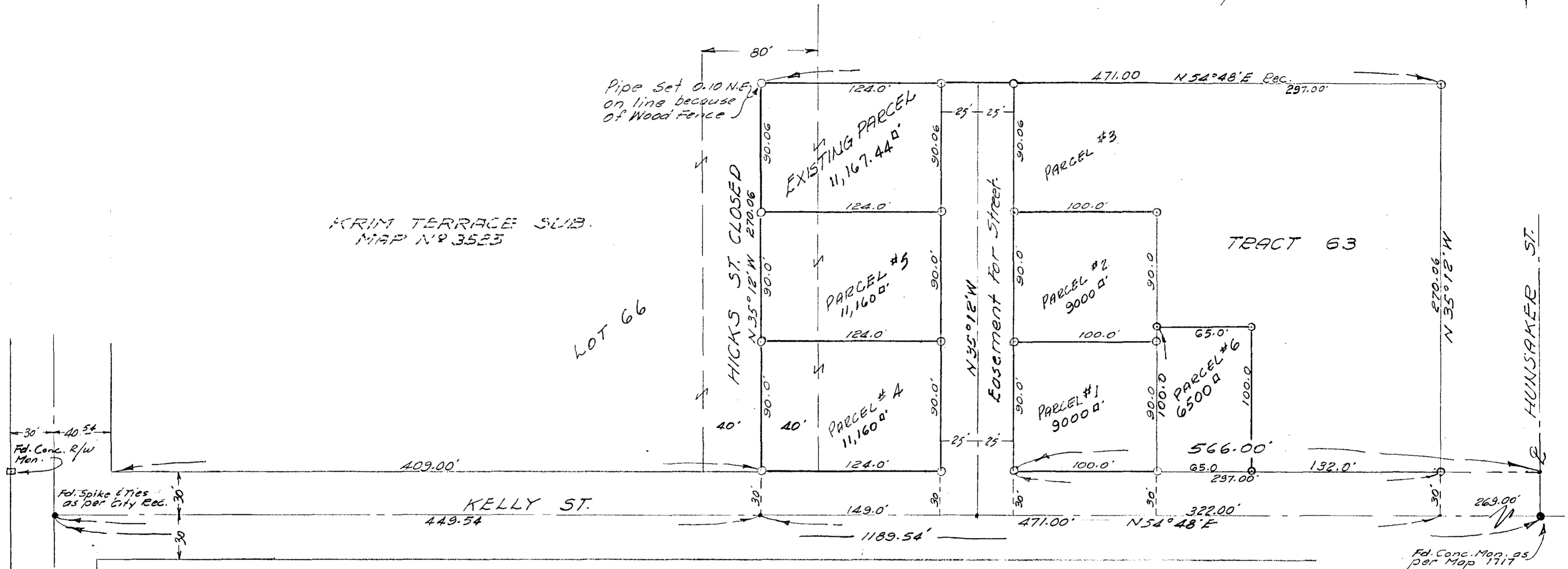
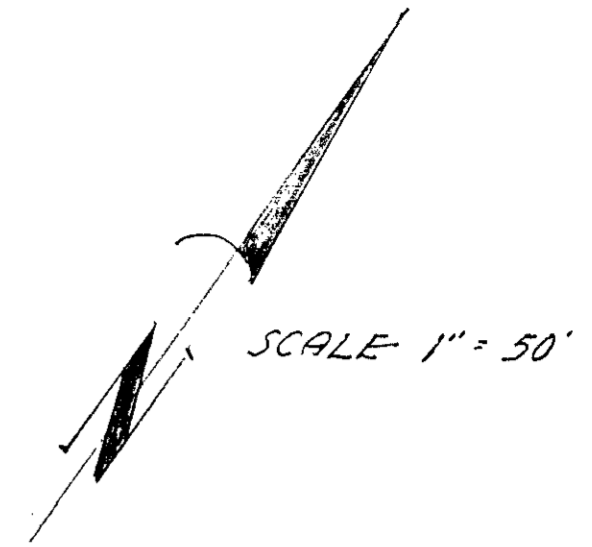


# SPLIT LOT MAP NO 247



BASIS OF BEARINGS  
 The E of Kelly St. as shown on  
 Map 1717, i.e. N 54° 48' E

LEGEND  
 ● Monuments Found  
 ○ 3/4" Iron Pipe, Tag B.C.E. 10301 Set

APPROVED  
 Date: Alton S. Ruden  
 By: 1-29-62  
 City Engineer

CITY OF OCEANSIDE  
 SURVEY OF A PORTION OF TR. 63  
 HOTELING LANDS MAP NO 1717  
 Requested by Andrew J. Imbilli  
 SOUTH COAST ENGINEERING SERVICE  
 William G. Ayer August 18, 1960.  
 B.C.E. 10301 DATE