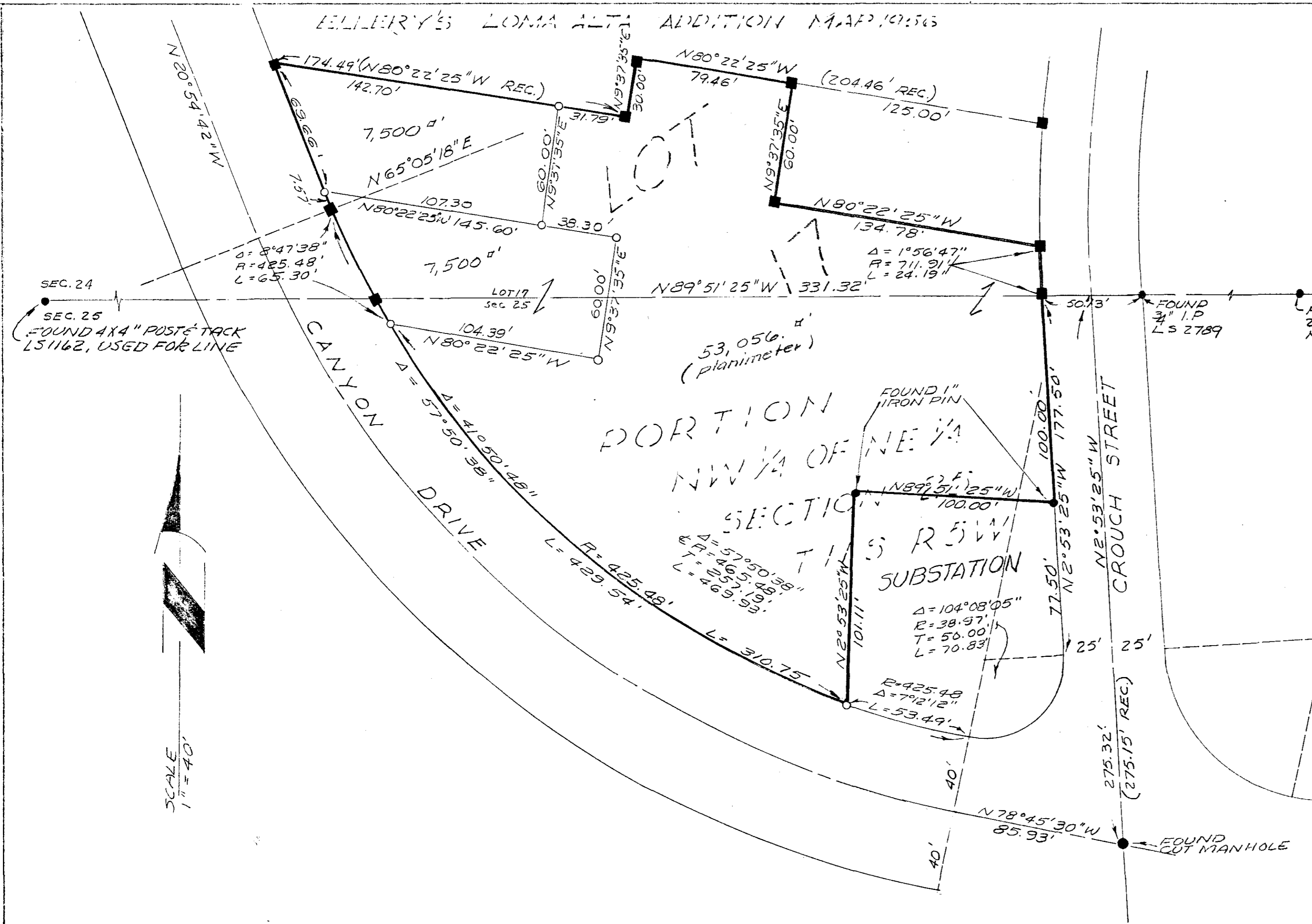


A PROPERTY SURVEY OF A PORTION OF LOT 17 OF ELLERY'S LOMA ALTA ADDITION MAP 1956, AND A PORTION THE NW 1/4 OF NE 1/4 SECTION 25 T11S, R5W IN THE CITY OF OCEANSIDE, CALIFORNIA

LEGEND

- INDICATES SET 3/4" IRON PIPE TAGGED 7604
- INDICATES FOUND AS SHOWN
- INDICATES FOUND 3/4" IRON PIPE RCE 7604

THE BASIS FOR BEARINGS OF THIS SURVEY IS THE SOUTH LINE OF ELLERY'S LOMA ALTA ADDITION MAP 1956 i.e. N89°51'25"W



LOT SPLIT MAP		
FOR MRS. KAUB		
DRAWN WPK	STETSON, STRAUSS & DRESSELHAUS, INC.	DATE 3-10-60
CHECKED MJK	<i>Donald F. Dresselhaus</i> DONALD F. DRESSELHAUS RCE 7604	SCALE 1" = 40'
APPROVED	528 S. HILL ST SAZ-2126 OCEANSIDE, CALIFORNIA	SHEET 1 of 1

*Alton & Ruden*  
ALTON L. RUDEN RCE 10163 CITY ENGR.  
OCEANSIDE, CALIFORNIA  
DATE: Aug 5 1960