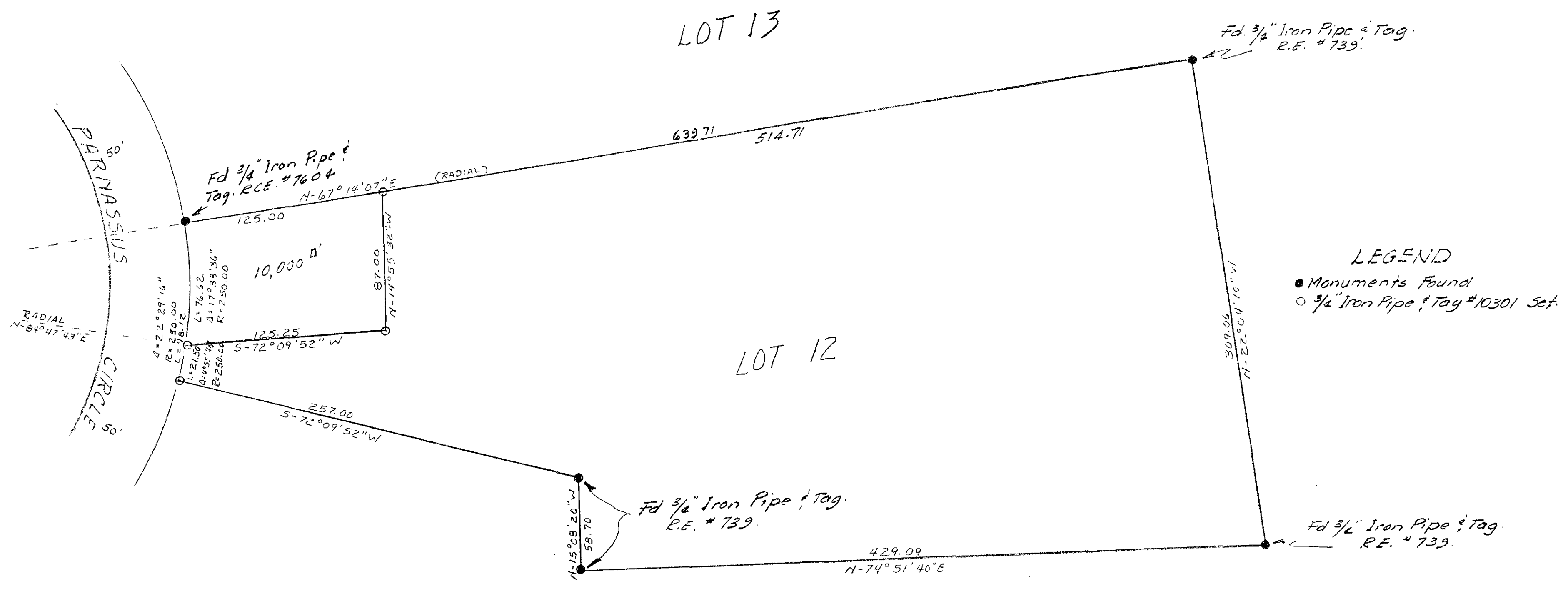
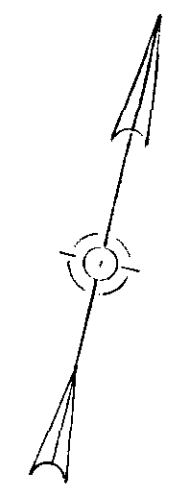


SPLIT LOT MAP N^o 245

SURVEY OF LOT 12, ELLERY HTS.
SUBDIVISION MAP 2356



LEGEND
 ● Monuments Found
 ○ 3/4" Iron Pipe & Tag #10301 Set

APPROVED BY THE
 PLANNING COMMISSION
 this 6th day of June, 1960
 Resolution No. 60-P-52
 Secretary *Ernest A. Taylor*

Alton L. Ruden
 ALTON L. RUDEN RCE 10163
 OCEANSIDE, CITY ENG.
 Nov. 22 1960
 DATE

LOT SPLIT MAP		
FOR CALVIN C. GABRIEL		
DRAWN W.V.Y.	SOUTH COAST ENG. SERVICE <i>William C. Capps</i> R.C.E. # 10301	DATE 6-7-60
CHECKED <i>JEM</i>	BANK OF AMERICA BLDG. PHONE-HY 2-3241 SAN CLEMENTE, CALIF.	SCALE 1" = 50'
APPROVED		SHEET 1 OF 1