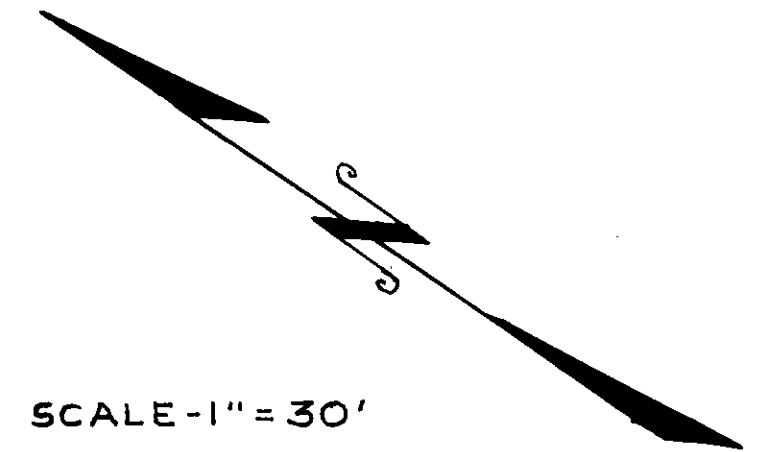


**RECORD OF SURVEY**  
 OF A PORTION OF TRACT 62 OF HOTELING  
 LANDS MAP 1717 OCEANSIDE, CALIFORNIA



NOTE: FOUND 3/4" PIPES AND COPPER DISCS  
 STAMPED L.S.2411 AT ALL POINTS INDICATED  
 THUS O UNLESS OTHERWISE NOTED.  
 ALL POINTS FOUND AS PER R.OFS. 3665

THE BASIS OF BEARING FOR THIS SURVEY  
 IS THE CENTLINE OF CASSIDY STREET AS  
 SHOWN ON R.OFS. MAP 3665 i.e. N. 54° 48' E.

THIS MAP CORRECTLY REPRESENTS A SURVEY  
 MADE BY ME OR UNDER MY DIRECTION IN  
 CONFORMANCE WITH THE REQUIREMENTS OF  
 CHAPTER 15 OF DIVISION 3 OF THE BUSINESS  
 AND PROFESSIONS CODE AT THE REQUEST OF  
 HARRY SIMONS IN APRIL 1960

*James A. Bell*  
 L.S. 2411

APPROVED  
 Date 4-8-60  
 By Alton Ruben  
 City Engineer

R. OF S. 3232

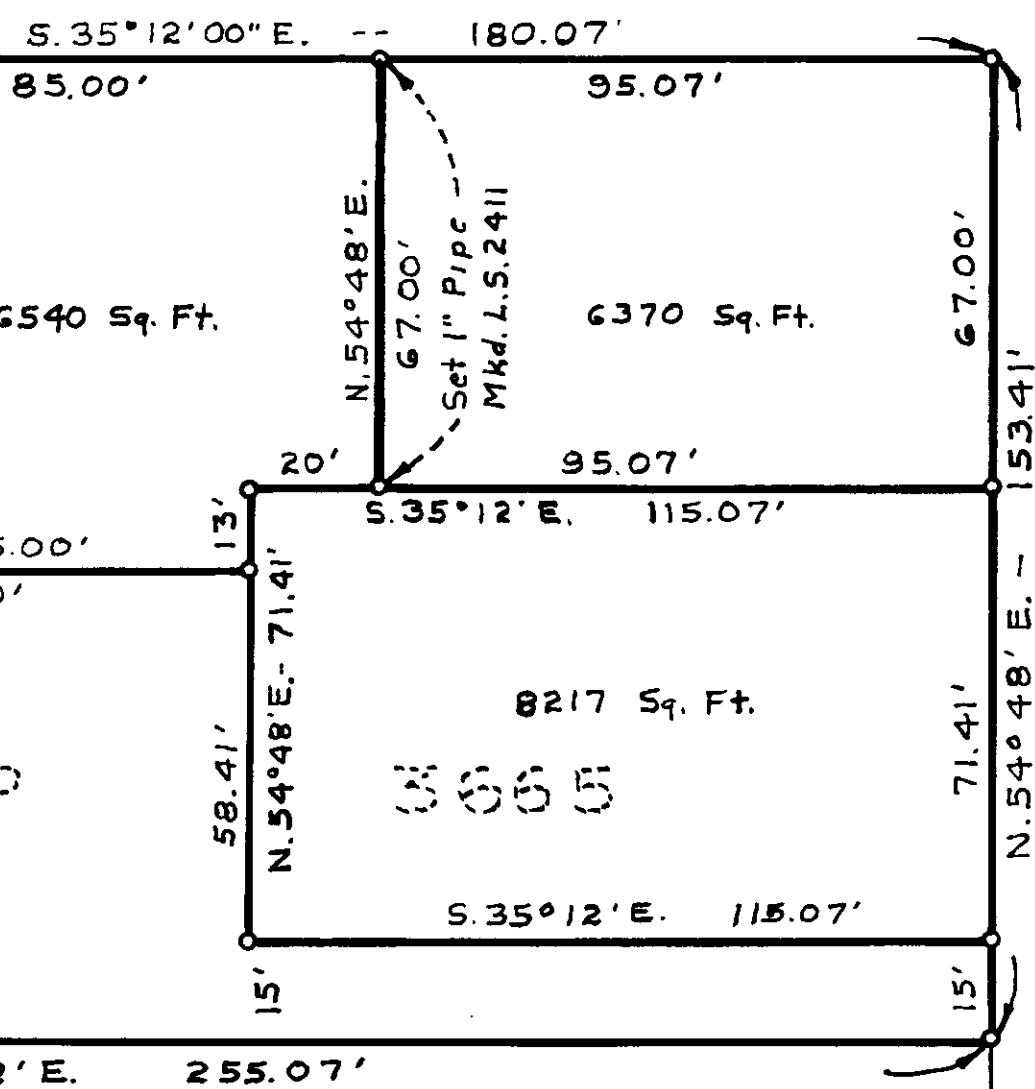
KURTZ STREET

S. 35° 12' 00" E.

STREET

CASSIDY

TR. 63 MAP 1717



R. OF S. MAP 12003 Sq. Ft.

MAP 3665 8217 Sq. Ft.

POR. TR. 62 MAP 1717

W.H. POTTER SUB. NO. 2  
 MAP 2907