

LOT SPLIT MAP NO 240

of a portion of Lot 4 in
Rancho Guajome
San Diego County, California
Scale 1"=100'

- Legend:
- Indicates found 3/4" Pipe "L.S. 1162" per E of S. 2272, unless otherwise noted.
 - Indicates set 3/4" Pipe with cement plug & brass disc stamped "L.S. 1162"

The basis of bearings for this Survey is the NE'y boundary of E of S. N 5158 - viz - N 56° 49' 10" W

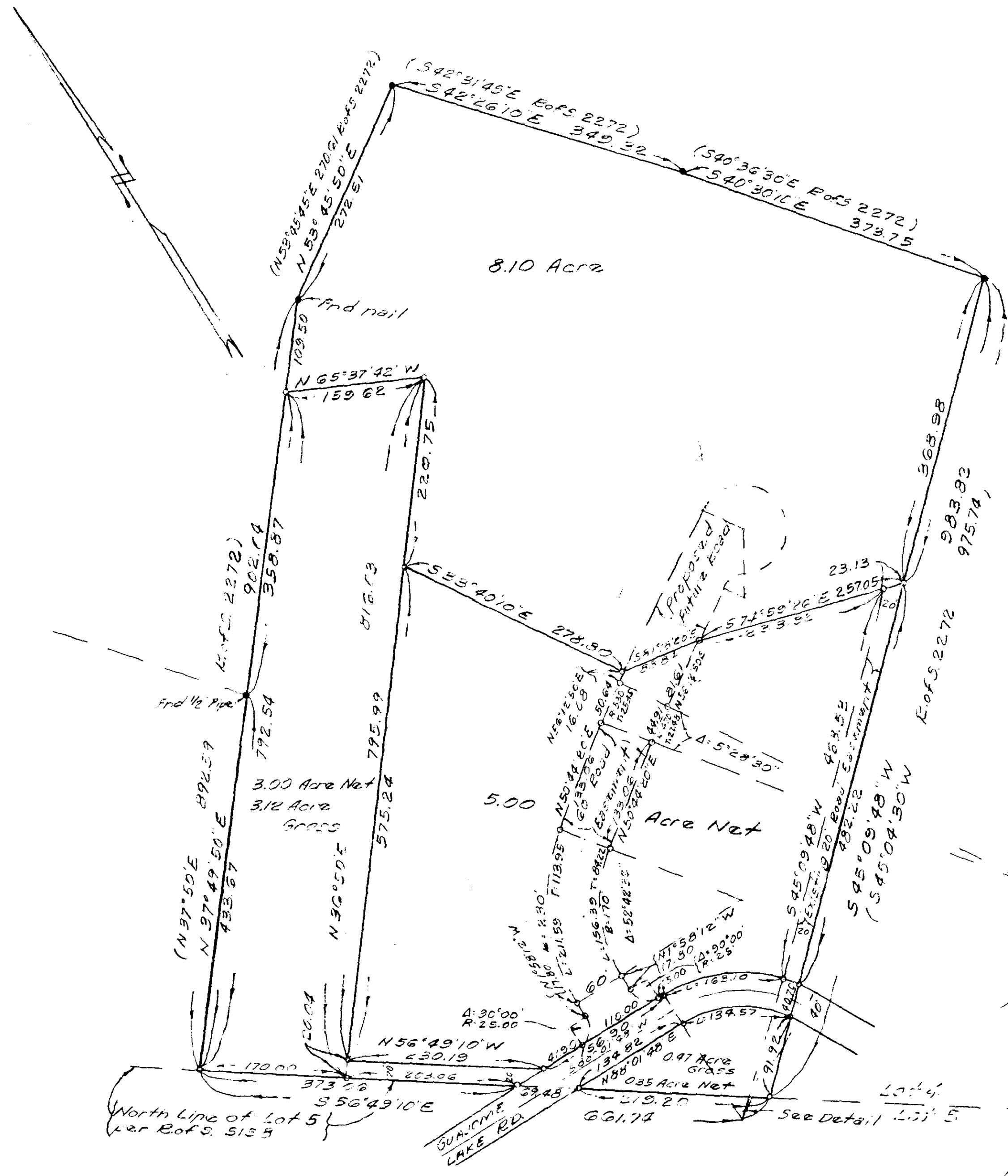
This map correctly represents a survey made by me or under my direction at the request of E. J. Albright in February 1960

N.P. Browne
N.P. Browne "L.S. 1162"

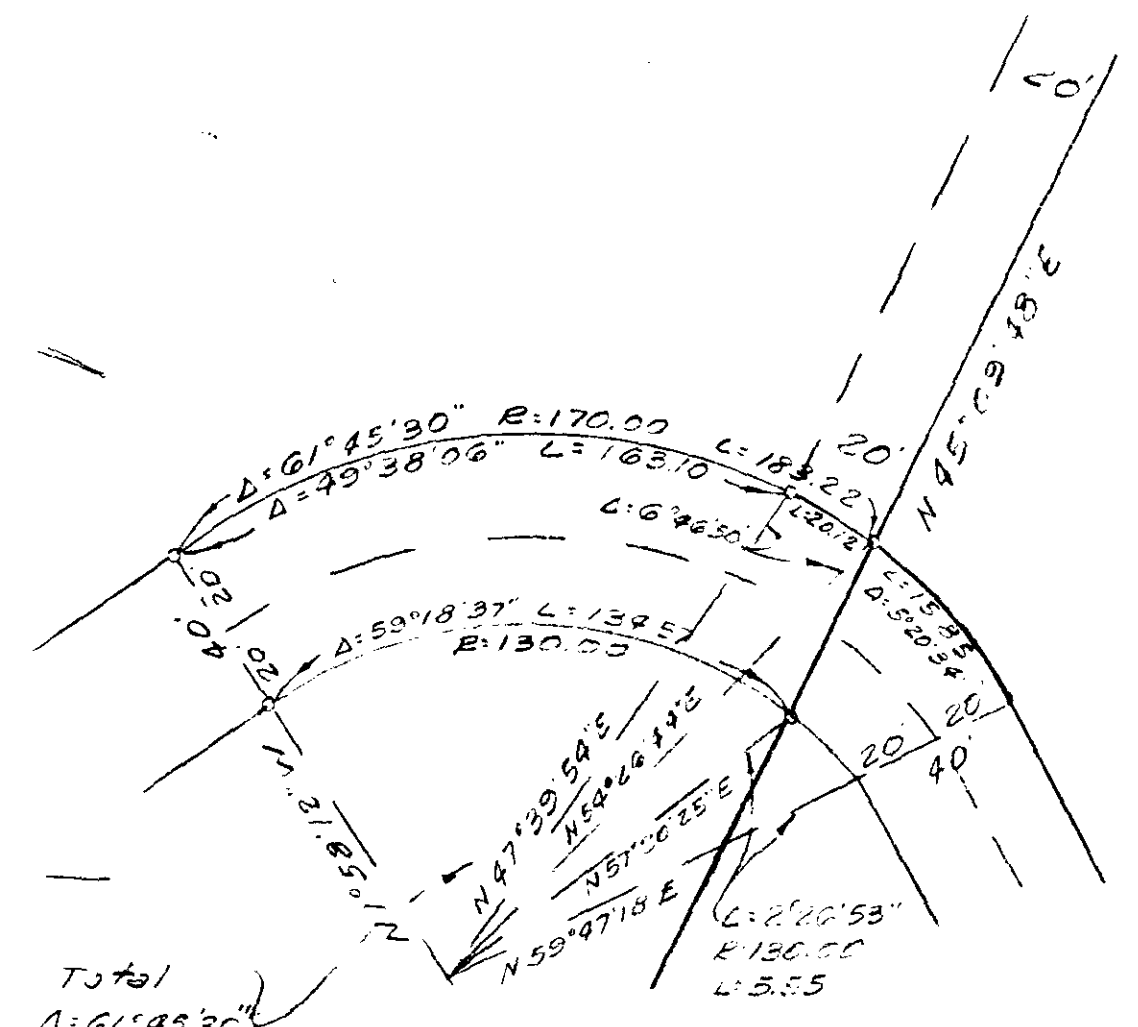
Approved _____
Alton L. Eiders, R.C.E. 10163
City Engineer

APPROVED BY THE
PLANNING COMMISSION
this 21st day of Mar., 1960
Resolution No. 60-P29
Secretary *Ernest A. Taylor*

APPROVED
Date 4-8-60
By *Alton L. Eiders*
City Engineer



E of S. N 5158
Lot 5 Rancho Guajome



Total
Δ: 61° 45' 30"
R: 170.00
L: 140.12
DETAIL
No Scale