

# SPLIT LOT SURVEY MAP N<sup>o</sup>

## RECORD OF SURVEY

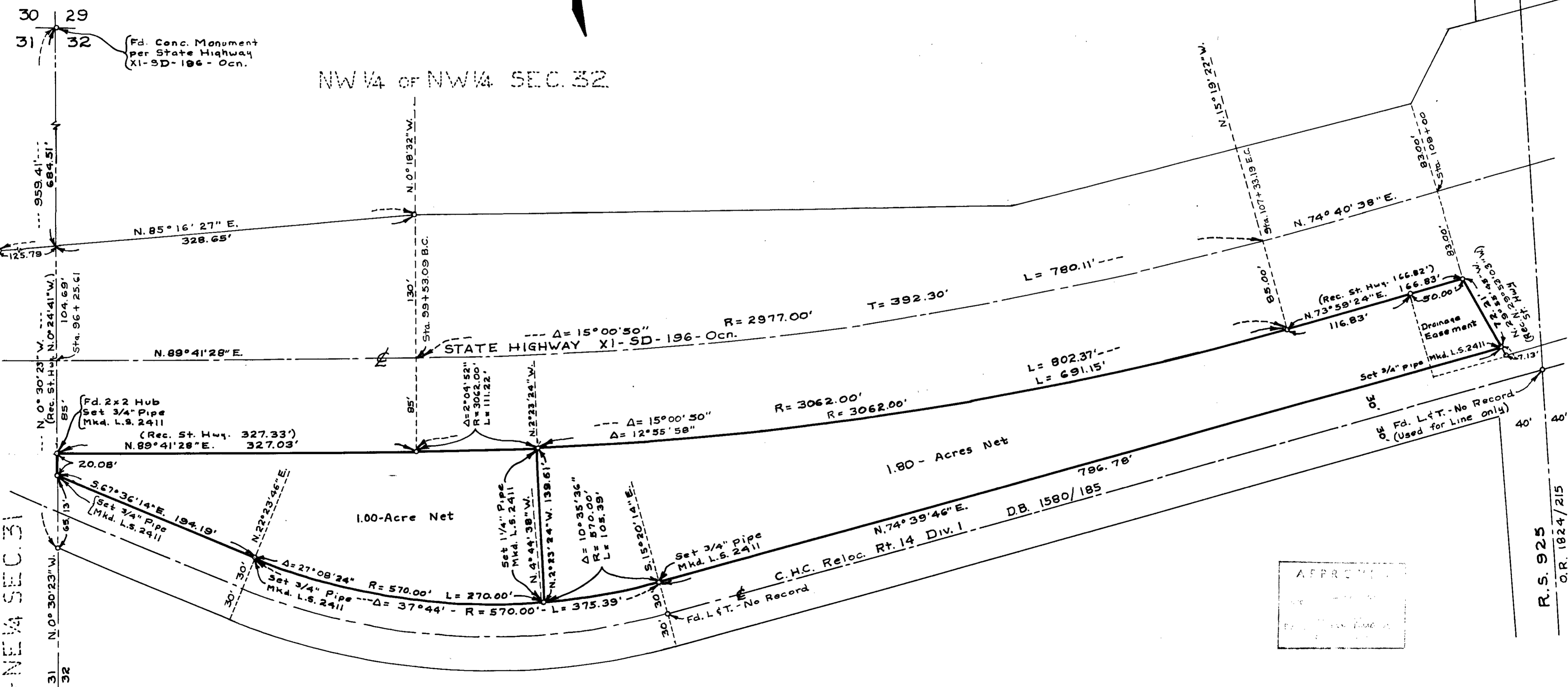
OF A PORTION OF THE NW 1/4 OF THE NW 1/4 SEC. 32 T.11.S. R.4,W. S.B.B. & M.

THE BASIS OF BEARING FOR THIS SURVEY IS THE CENTERLINE OF STATE HIGHWAY XI-SD-196-Ocn. i.e. N.89°41'28"E.

THIS MAP CORRECTLY REPRESENTS A SURVEY MADE BY ME OR UNDER MY DIRECTION IN CONFORMANCE WITH THE REQUIREMENTS OF CHAPTER 15 OF DIVISION 3 OF THE BUSINESS AND PROFESSIONS CODE AT THE REQUEST OF DR. JAMES B. WIGHT, IN FEBRUARY 1960

*James A. Isbell*  
L.S. 2411

SCALE 1" = 60'



APPROVED  
[Signature]

NOTE: FOUND STATE HIGHWAY CONCRETE R/W MONUMENTS AT ALL POINTS INDICATED THUS O UNLESS OTHERWISE NOTED