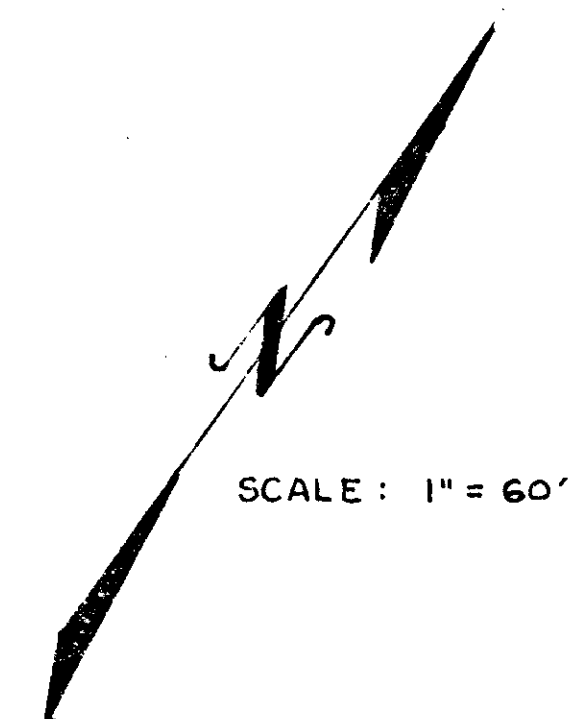
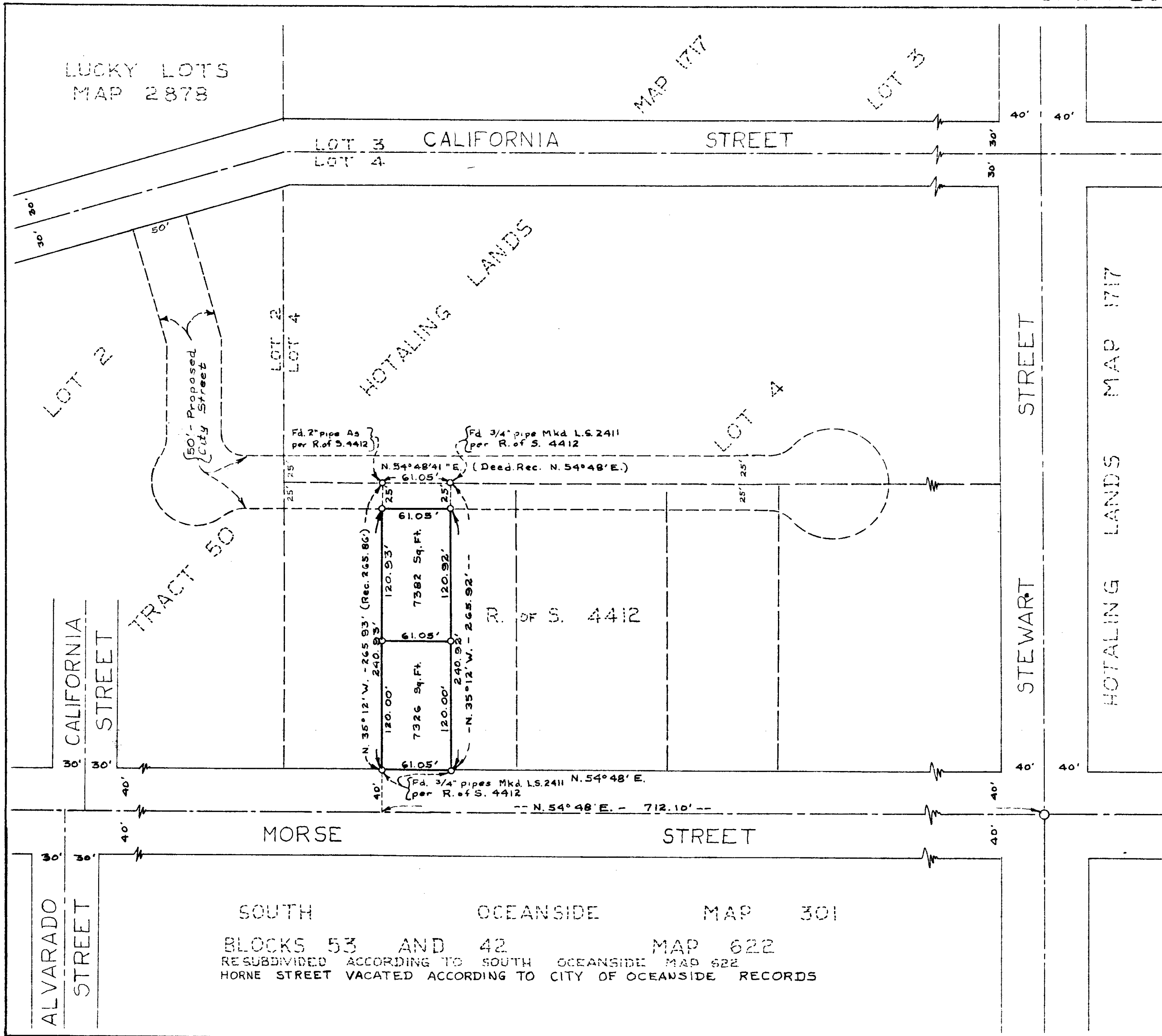


RECORD OF SURVEY  
OF A PORTION OF LOT 4 OF TRACT 50 OF HOTALING  
LANDS MAP 1717, OCEANSIDE, CALIFORNIA



THE BASIS OF BEARING FOR THIS SURVEY IS THE NORTH LINE OF MORSE STREET AS SHOWN ON MAP 1717 OF HOTALING LANDS i.e. N. 54° 48' E.

THIS MAP CORRECTLY REPRESENTS A SURVEY MADE BY ME OR UNDER MY DIRECTION IN CONFORMANCE WITH THE REQUIREMENTS OF CHAPTER 15 OF DIVISION 3 OF THE BUSINESS AND PROFESSIONS CODE AT THE REQUEST OF ED DAWSON IN JANUARY 1960

*James A. Stell*  
L.S. 2411

NOTE :- SET 1" PIPE AND COPPER DISCS STAMPED L.S. 2411 AT ALL POINTS SHOWN THUS O UNLESS OTHERWISE NOTED

APPROVED  
Date: July 22 1960  
By: Alton F. Ruden  
City Engineer

SOUTH OCEANSIDE MAP 301  
BLOCKS 53 AND 42 MAP 622  
RESUBDIVIDED ACCORDING TO SOUTH OCEANSIDE MAP 622  
HORNE STREET VACATED ACCORDING TO CITY OF OCEANSIDE RECORDS

25-232 Ed Dawson 15-A