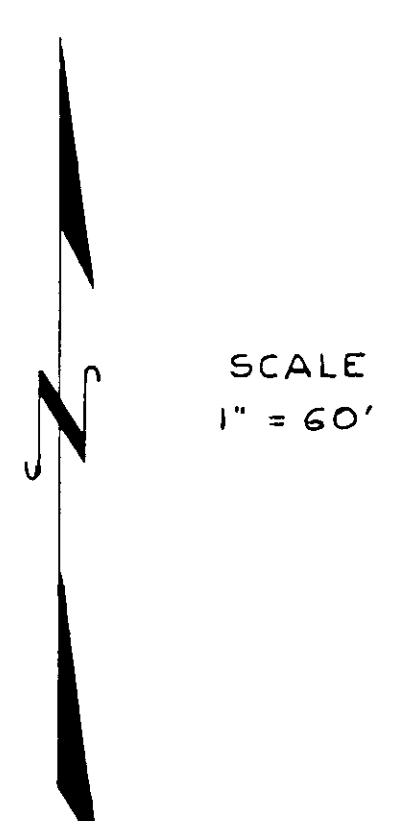
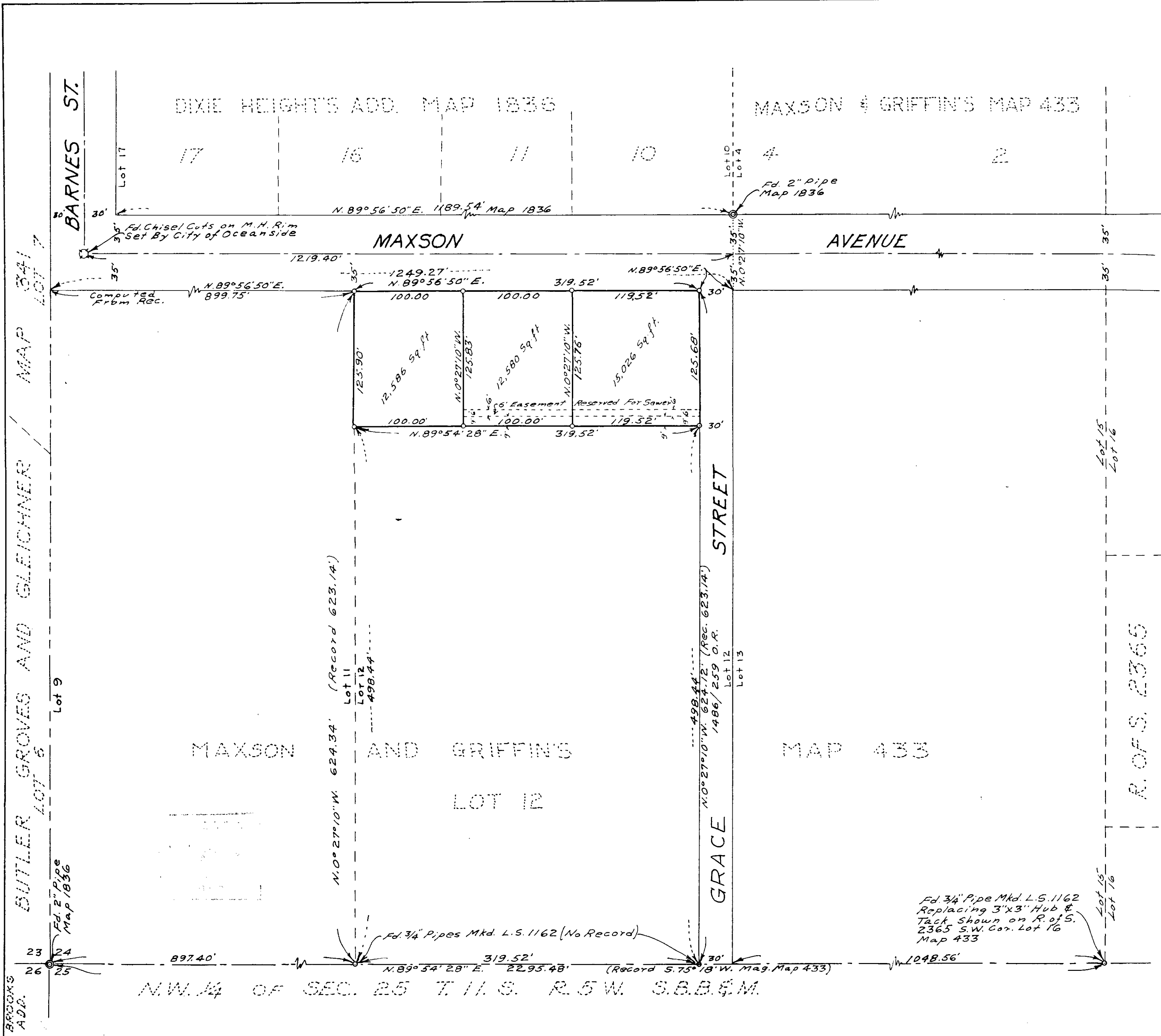


SPLIT LOT SURVEY MAP N^o 231

RECORD OF SURVEY
OF A PORTION OF LOT 12 OF MAXSON AND
GRIFFIN'S MAP 433, OCEANSIDE, CALIFORNIA



NOTE: - SET 3/4" PIPE AND COPPER DISCS MARKED L.S. 2411 AT ALL POINTS SHOWN THUS O UNLESS OTHERWISE NOTED

THE BASIS OF BEARING FOR THIS SURVEY IS THE NORTH LINE OF MAXSON AVENUE AS SHOWN ON MAP 1836 i. e. $N. 89^{\circ} 56' 50'' E.$

THIS MAP CORRECTLY REPRESENTS A SURVEY MADE BY ME OR UNDER MY DIRECTION IN CONFORMANCE WITH THE REQUIREMENTS OF CHAPTER 15 OF DIVISION 3 OF THE BUSINESS AND PROFESSIONS CODE AT THE REQUEST OF CHARLES ARNELL

James A. Isbell
L.S. 2411

R. OF S. 2365

Fd. 3/4" Pipe Mkd. L.S. 1162 Replacing 3"x3" Hub & Tack Shown on R. of S. 2365 S.W. Cor. Lot 16 Map 433

12-45-889

15-231 Charles Arnell 15-A