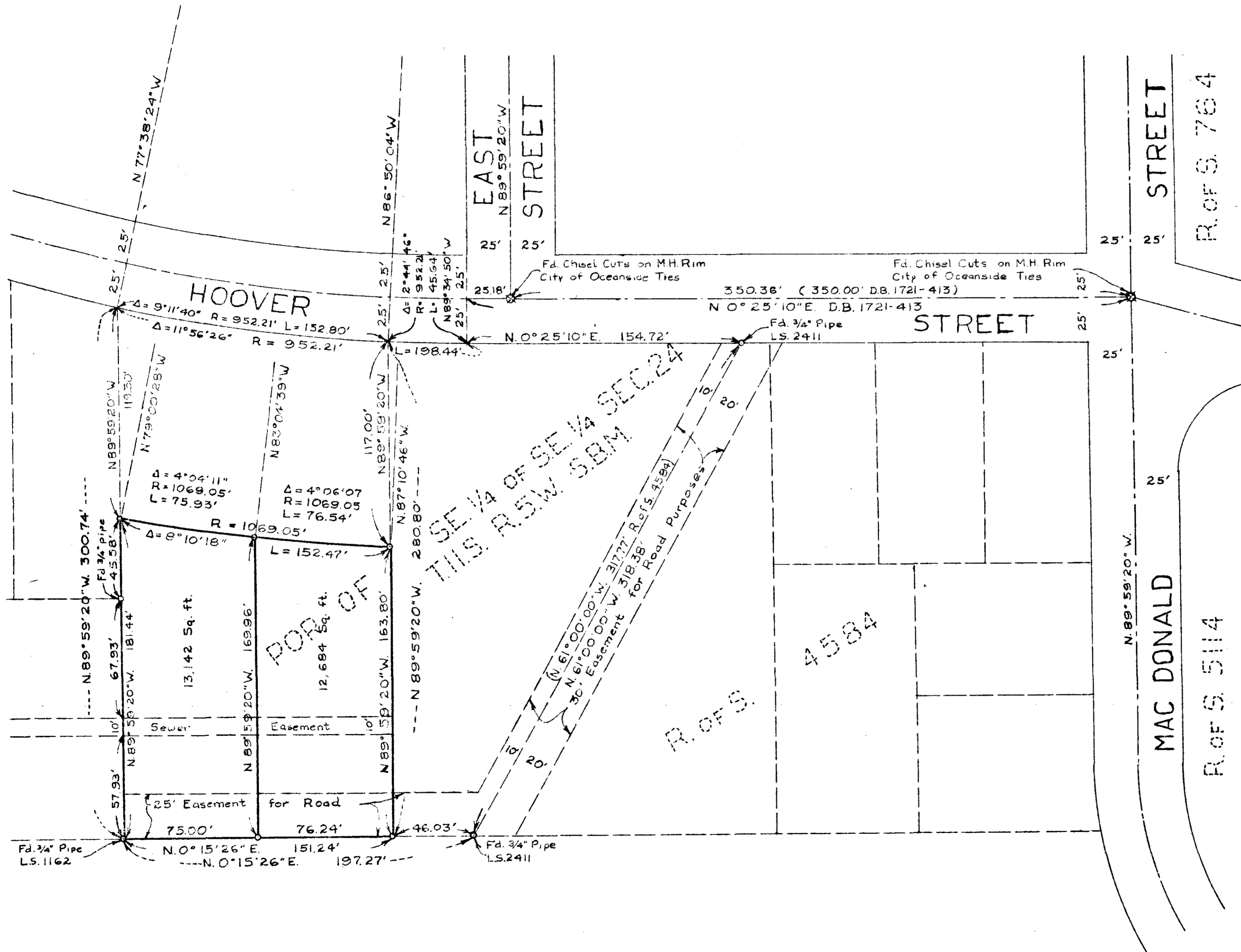


RECORD OF SURVEY  
 OF A PORTION OF THE S.E. 1/4 OF THE S.E. 1/4 OF SEC.  
 24 T.11.S. R.5.W. S.B.M. OCEANSIDE, CALIFORNIA



SCALE 1" = 40'



THE BASIS OF BEARING FOR THIS SURVEY IS THE CENTERLINE OF HOOVER STREET BETWEEN EAST STREET AND MACDONALD STREET AS SHOWN IN DEED BOOK 1721 PAGE 413 I.E. N 0° 25' 10" E.

NOTE: - SET 3/4" PIPE AND COPPER DISCS MARKED L.S. 2411 AT ALL POINTS SHOWN THUS O UNLESS OTHERWISE NOTED.

THIS MAP CORRECTLY REPRESENTS A SURVEY MADE BY ME OR UNDER MY DIRECTION IN CONFORMANCE WITH THE REQUIREMENTS OF CHAPTER 15 OF DIVISION 3 OF THE BUSINESS AND PROFESSIONS CODE AT THE REQUEST OF K.R. WOODARD

*James L. Bell*  
 L.S. 2411

APPROVED BY THE  
 PLANNING COMMISSION  
 this 31<sup>st</sup> day of Dec. 1959  
 Resolution No. 59-P96

Secretary *Conrad Taylor*