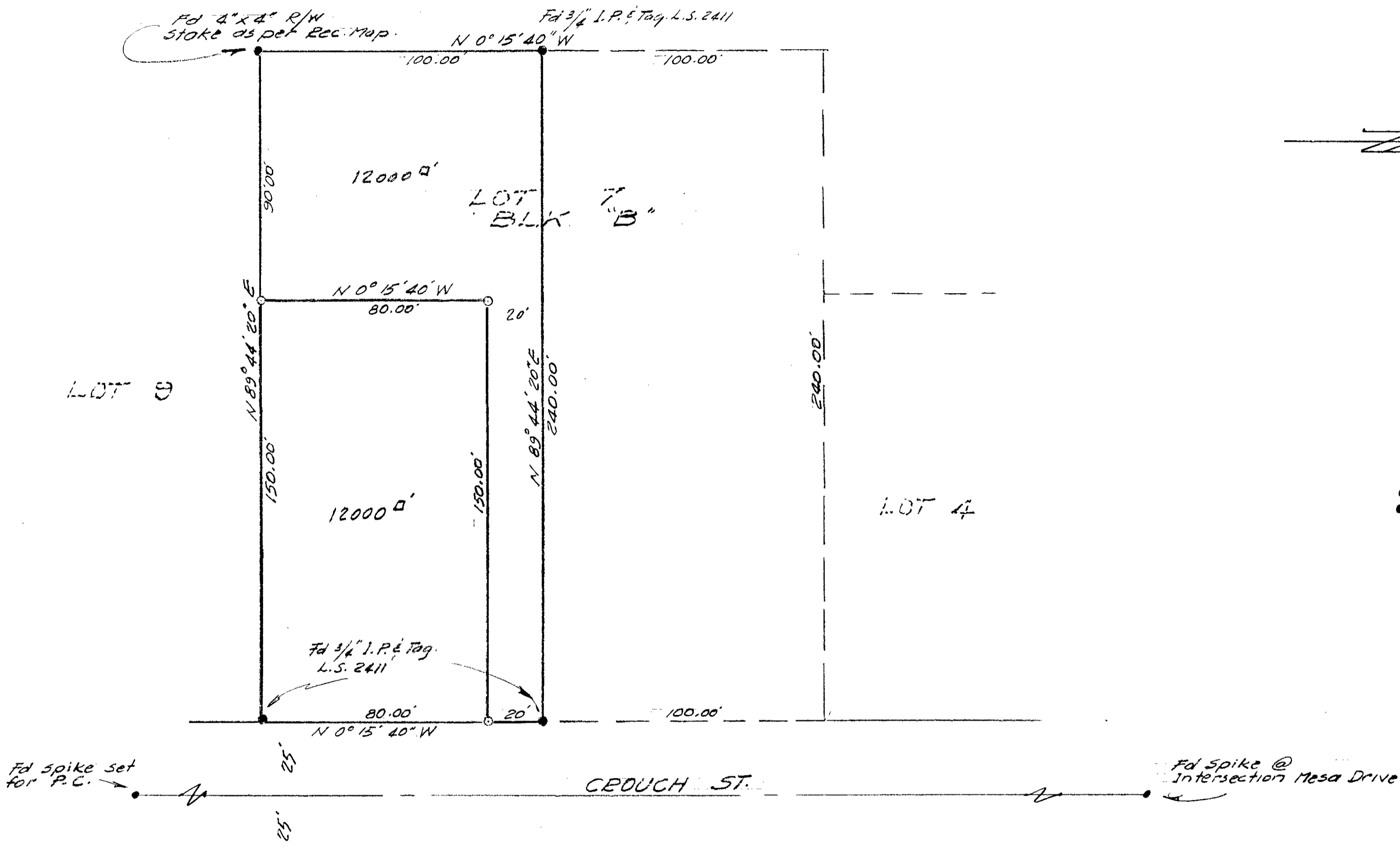
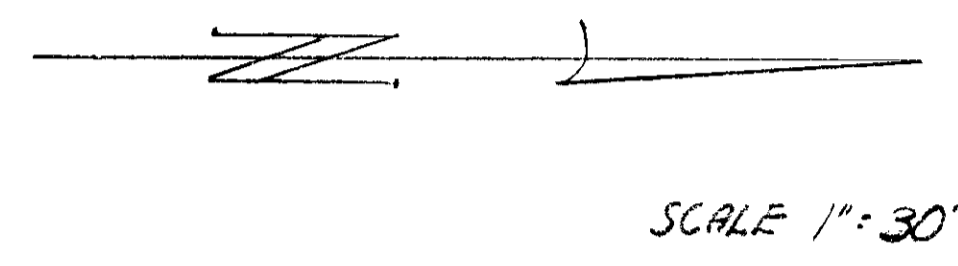


SPLIT LOT MAP N^o 227



- LEGEND**
- o Set 3/4" Iron Pipe & Tag RCE 10301
 - Found Monuments & Tag L.S. 2411

APPROVED BY THE
 PLANNING COMMISSION
 this 1st day of Feb. 1960
 Resolution No. 60-P-13
 Secretary Ernest A. Taylor

Approved Alton Z Ruden 2-7 60
 AL. RUDEN RCE 10163

REQUESTED BY M. H. O'CONNELL
 CITY OF OCEANSIDE
 SURVEY OF THE SOUTH 1/2 LOT 7
 BLK. 'B' ELLERY'S LOMA ALTA ADD.
 MAP N^o 1956
 SOUTH COAST ENGINEERING SERVICE
William A. Ayers Feb. 8 1960
 RCE 10301 DATE

18-227

O'Connell

15-A