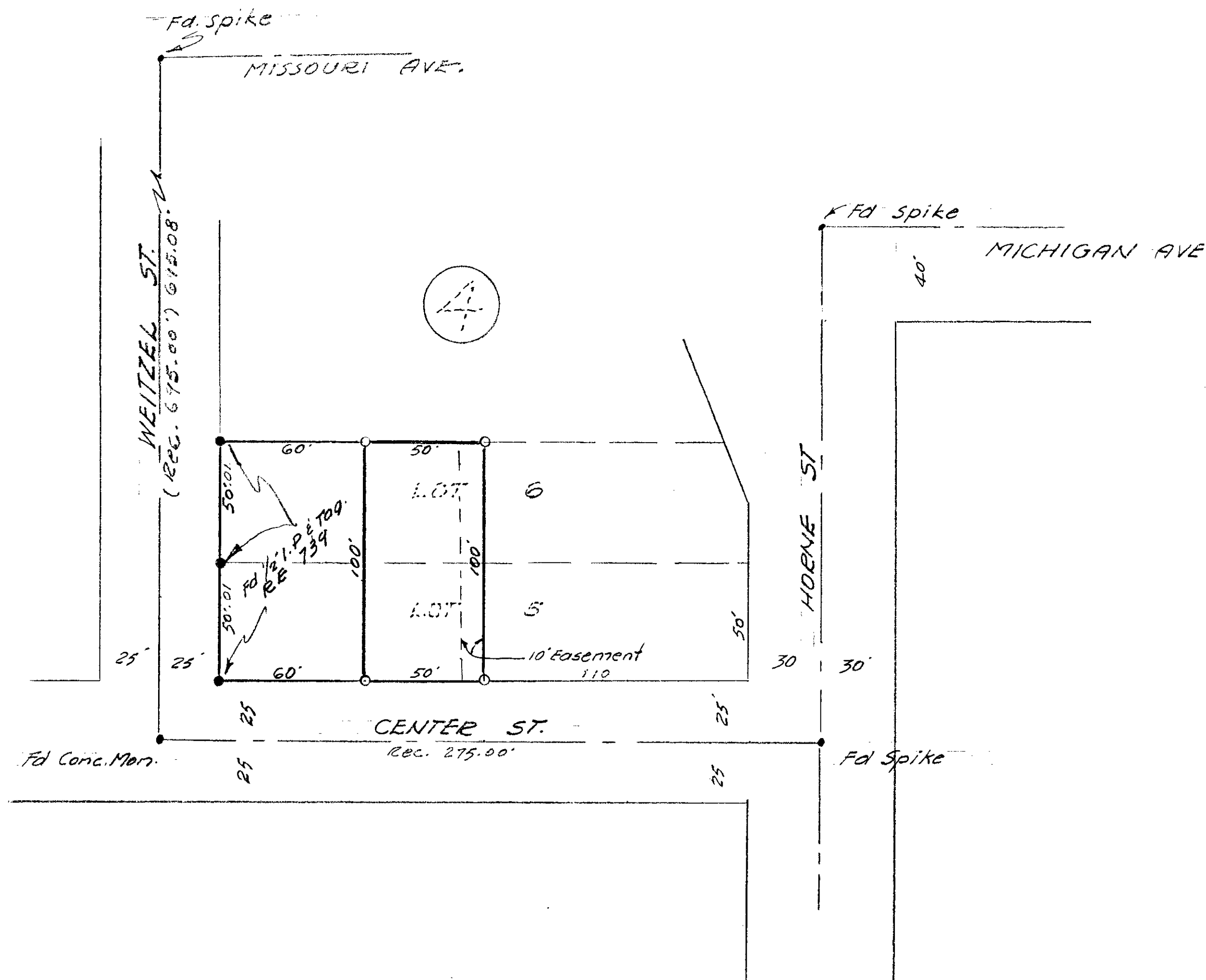


SPLIT LOT MAP N^o 226



SCALE 1" = 40'

LEGEND
 ○ Set 3/4" Iron Pipe & Tag R.C.E. 10301
 ● Found 1/2" Iron pipe & Tag R.E. 739

APPROVED BY THE
 PLANNING COMMISSION
 this 15th day of Feb. 1960
 Resolution No. 60-P-15
 Secretary *Ernest A. Taylor*

Approved *Alton & Ruden*
 A.L. Euden - R.C.E. 10163

REQUESTED BY G. LOPEZ
 CITY OF OCEANSIDE
 SURVEY OF PORTIONS OF LOT 5 & 6
 BLK. 4, CORONA HTS. ADD
 MAP N^o 918
 SOUTH COAST ENGINEERING SERVICE
William G. Ayer Feb. 8, 1960
 R.C.E. 10301 DATE