

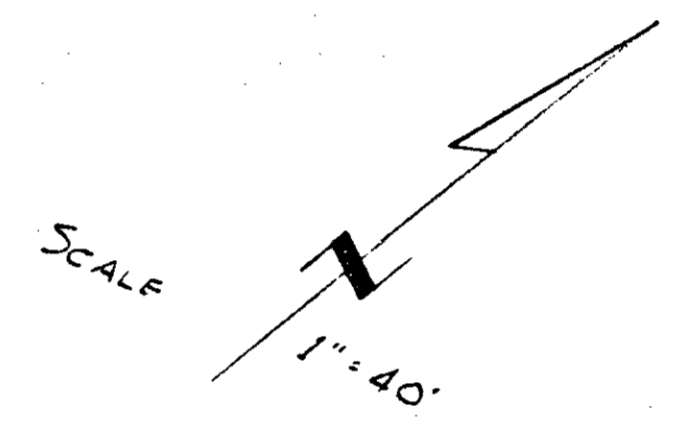
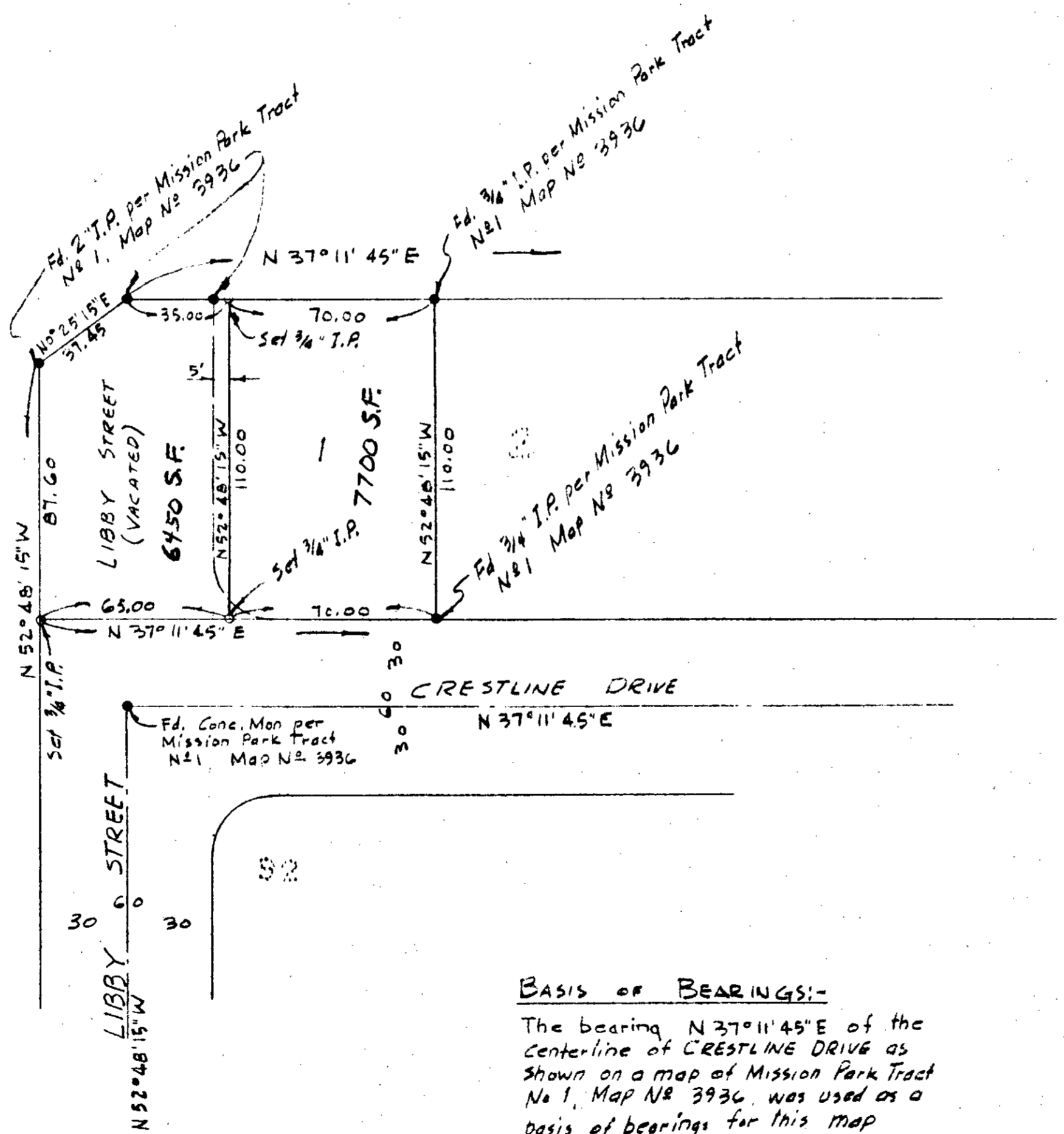
LOT SPLIT MAP

BEING A SPLIT OF LOT 1 AND LIBBY STREET
(NOW VACATED) OF MISSION PARK TRACT NO 1
ACCORDING TO MAP NO 3936 IN THE CITY OF
OCEANSIDE, COUNTY OF SAN DIEGO, STATE OF
CALIFORNIA

TECHNOLOGICAL ENGINEERING CORPORATION

This survey made under my supervision in
September 1959

J.A. Patterson
P.E. 10410



BASIS OF BEARINGS:-
The bearing N 37° 11' 45" E of the centerline of CRESTLINE DRIVE as shown on a map of Mission Park Tract No 1, Map No 3936, was used as a basis of bearings for this map

LEGEND
○ Monument Set
● Monument Found

REQUESTED BY L.B. HARBOUR JR.

APPROVED THIS 22nd DAY OF October 1959

Alton Ruden
City Engineer