

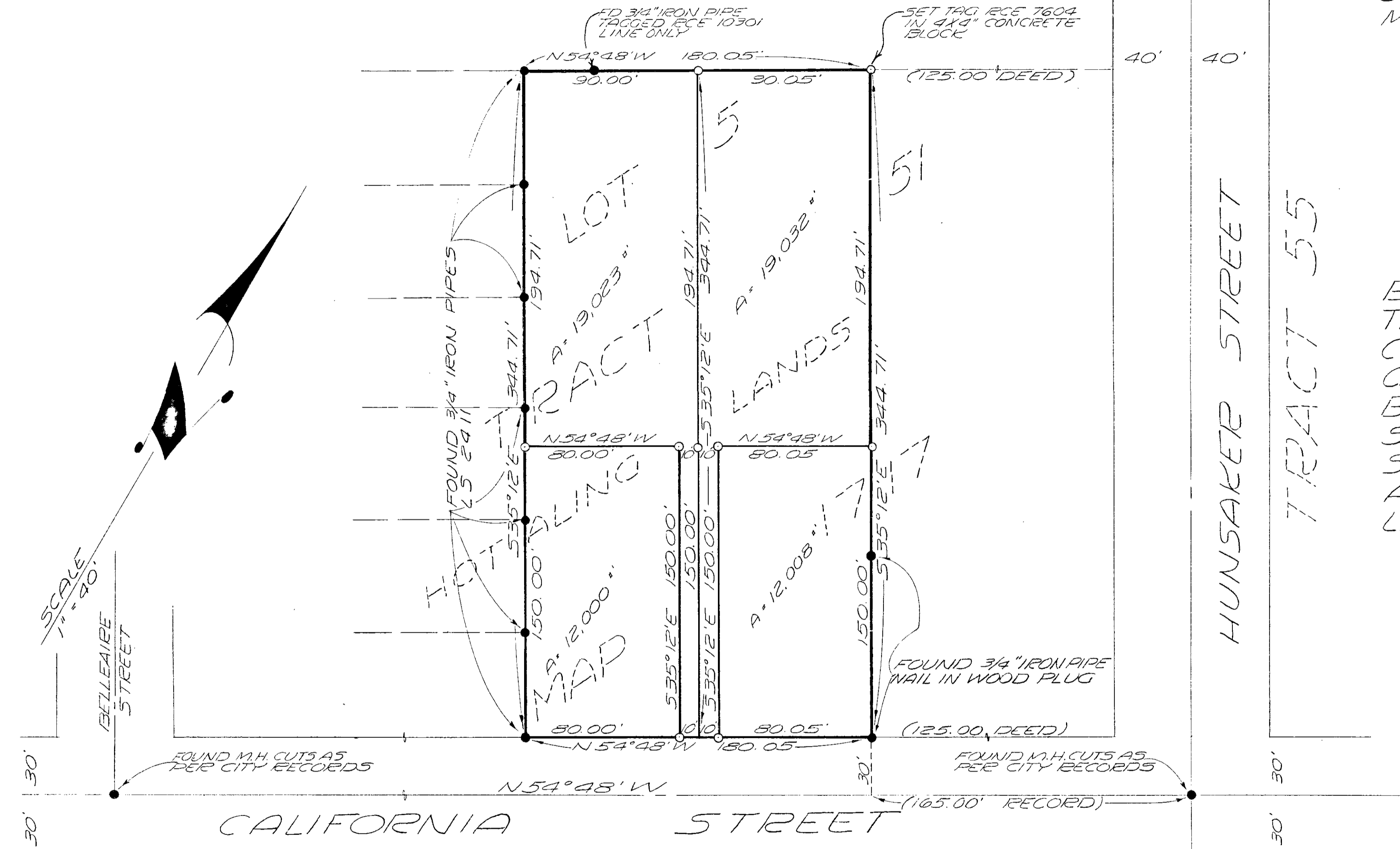
LOT SPLIT MAP NO. 214

A PROPERTY SURVEY OF
A PORTION OF LOT 5 IN
TRACT 51 OF HOTELING
LANDS IN THE CITY OF
OCEANSIDE, CALIF.
MAP NO. 1717

LEGEND

- INDICATES SET 3/4" IRON PIPE TAGGED RCE 7604
- INDICATES FOUND AS SHOWN

BASIS OF BEARING OF
THIS SURVEY IS THE
CENTERLINE OF
CALIFORNIA STREET
BETWEEN HUNSAKER
STREET AND BELLEAIRE
STREET. i.e. N54°48'W
AS SHOWN ON HOTELING
LANDS MAP 1717



SCALE
1" = 40'

CALIFORNIA STREET

HUNSAKER STREET
TRACT 55

TRACT 53

LOT SPLIT MAP		
FOR W. B. MILLER		
DRAWN <i>Alton L. Ruden</i>	DEESSELHAUS ENGINEERS	DATE 8-14-59
CHECKED <i>W.B. Miller</i>	RCE 7604	SCALE 1" = 40'
APPROVED <i>Alton L. Ruden</i>	528 SO. HILL ST. OCEANSIDE, CALIF. PH 5A-2-2126	SHEET 1 OF 1

APPROVED BY THE
PLANNING COMMISSION
this 5th day of JAN, 1959
Resolution No. 29-P-1
Secretary *[Signature]*

Alton L. Ruden
ALTON L. RUDEN RCE 10163
OCEANSIDE CITY ENG
Aug 29 1959
DATE

SUR 59-75
Miller 15-214 15A