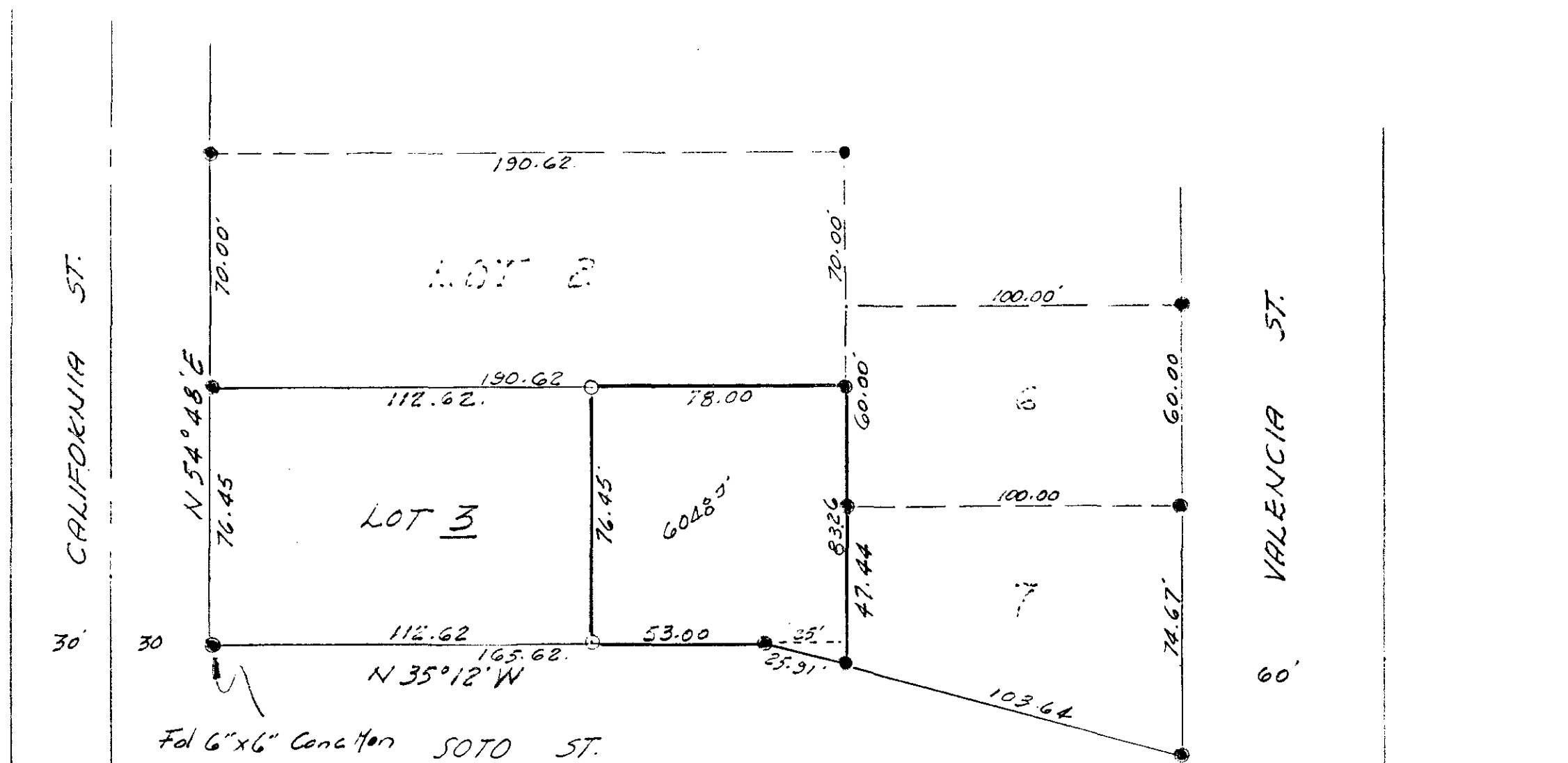
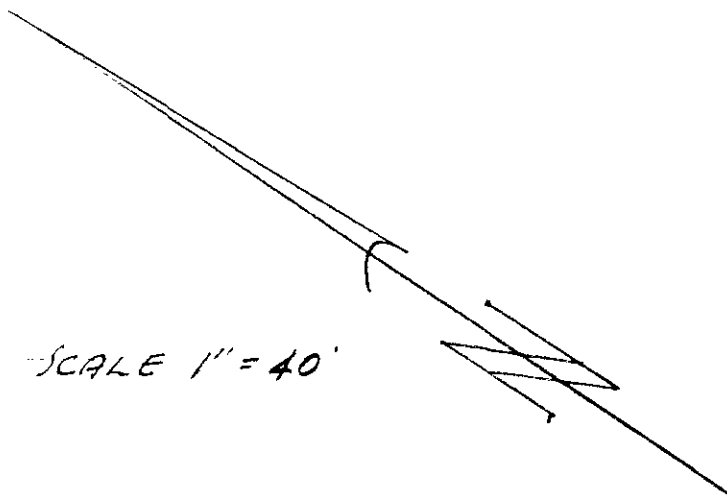


SPLIT LOT MAP NO 213



REQUESTED BY H. CAPEHART

CITY OF OCEANSIDE	
SURVEY OF PORTIONS OF LOT 3	
OCEANVIEW MANOR	
MAP NO 3280	
SOUTH COAST ENGINEERING SERVICE	
William G. Cayer	AUG. 22, 1959
R.C.E. 10301	DATE

Approved William G. Cayer  
A.L. Ruden - R.C.E. 10163