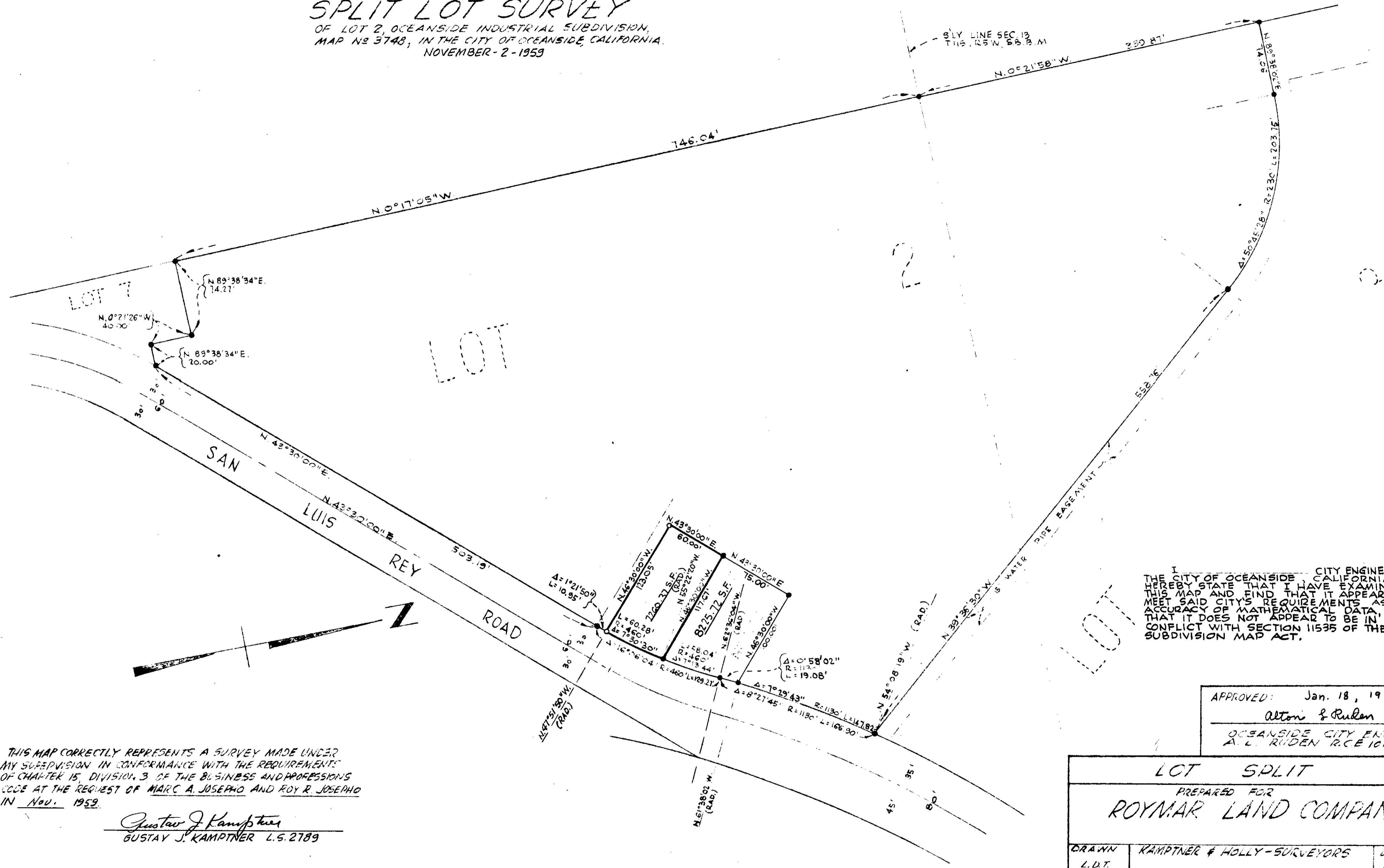


SPLIT LOT SURVEY
 OF LOT 2, OCEANSIDE INDUSTRIAL SUBDIVISION,
 MAP NO 3748, IN THE CITY OF OCEANSIDE, CALIFORNIA.
 NOVEMBER-2-1959



I, CITY ENGINEER OF THE CITY OF OCEANSIDE, CALIFORNIA, HEREBY STATE THAT I HAVE EXAMINED THIS MAP AND FIND THAT IT APPEARS TO MEET SAID CITY'S REQUIREMENTS AS TO ACCURACY OF MATHEMATICAL DATA, AND THAT IT DOES NOT APPEAR TO BE IN CONFLICT WITH SECTION 11535 OF THE SUBDIVISION MAP ACT.

APPROVED: Jan. 18, 1960
 Alton & Ruden
 OCEANSIDE CITY ENG.
 A. L. RUDEN R.C.E. 10163

LOT SPLIT		
PREPARED FOR ROYMAR LAND COMPANY		
DRAWN L.D.T.	KAMPTNER & HOLLY-SURVEYORS	DATE 11-2-59
CHECKED D.H.H.	<i>Gustav J. Kamptner</i> L.S. 2789 GUSTAV J. KAMPTNER	SCALE 1" = 60'
APPROVED	539 ELM AVENUE CARLSBAD, CALIFORNIA PARKWAY - 3 - 1025	SHEET

THIS MAP CORRECTLY REPRESENTS A SURVEY MADE UNDER MY SUPERVISION IN CONFORMANCE WITH THE REQUIREMENTS OF CHAPTER 15, DIVISION 3 OF THE BUSINESS AND PROFESSIONS CODE AT THE REQUEST OF MARC A. JOSEPHO AND ROY R. JOSEPHO IN Nov. 1959.

Gustav J. Kamptner
 GUSTAV J. KAMPTNER L.S. 2789

NOTE: CORNER MONUMENTS AS INDICATED WILL BE SET BY ME WITHIN 30 DAYS FROM THE DATE OF APPROVAL OF THIS MAP BY THE CITY OF OCEANSIDE.

Gustav J. Kamptner
 GUSTAV J. KAMPTNER L.S. 2789

- LEGEND •
- MONUMENTS FOUND ACCORDING TO RECORD - (MAP NO 3748)
 - MONUMENTS SET: 1 1/4" IRON PIPE TAGGED L.S. 2789

• BASIS OF BEARINGS •
 THE BEARING OF SAN LUIS REY ROAD SHOWN ON MAP 3748 AS N 43° 30' 00" E. WAS USED AS THE BASIS OF BEARINGS FOR THIS MAP.

NOTE: REVISED - 12-7-59 L.D.T.