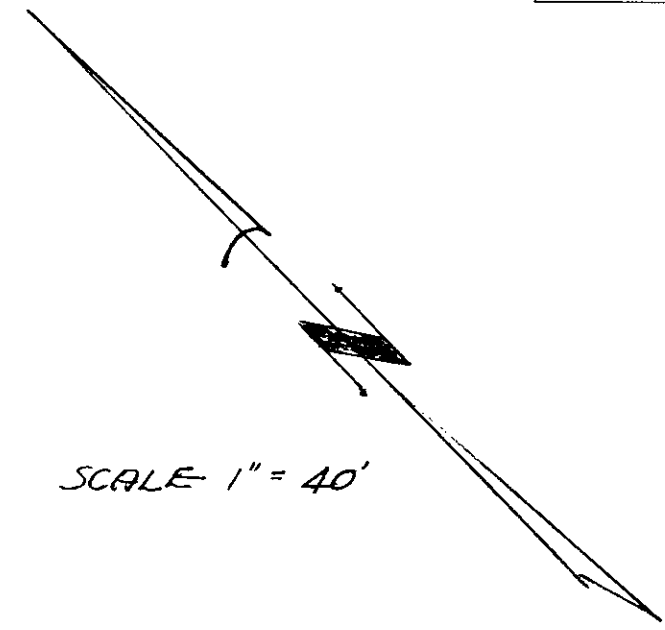
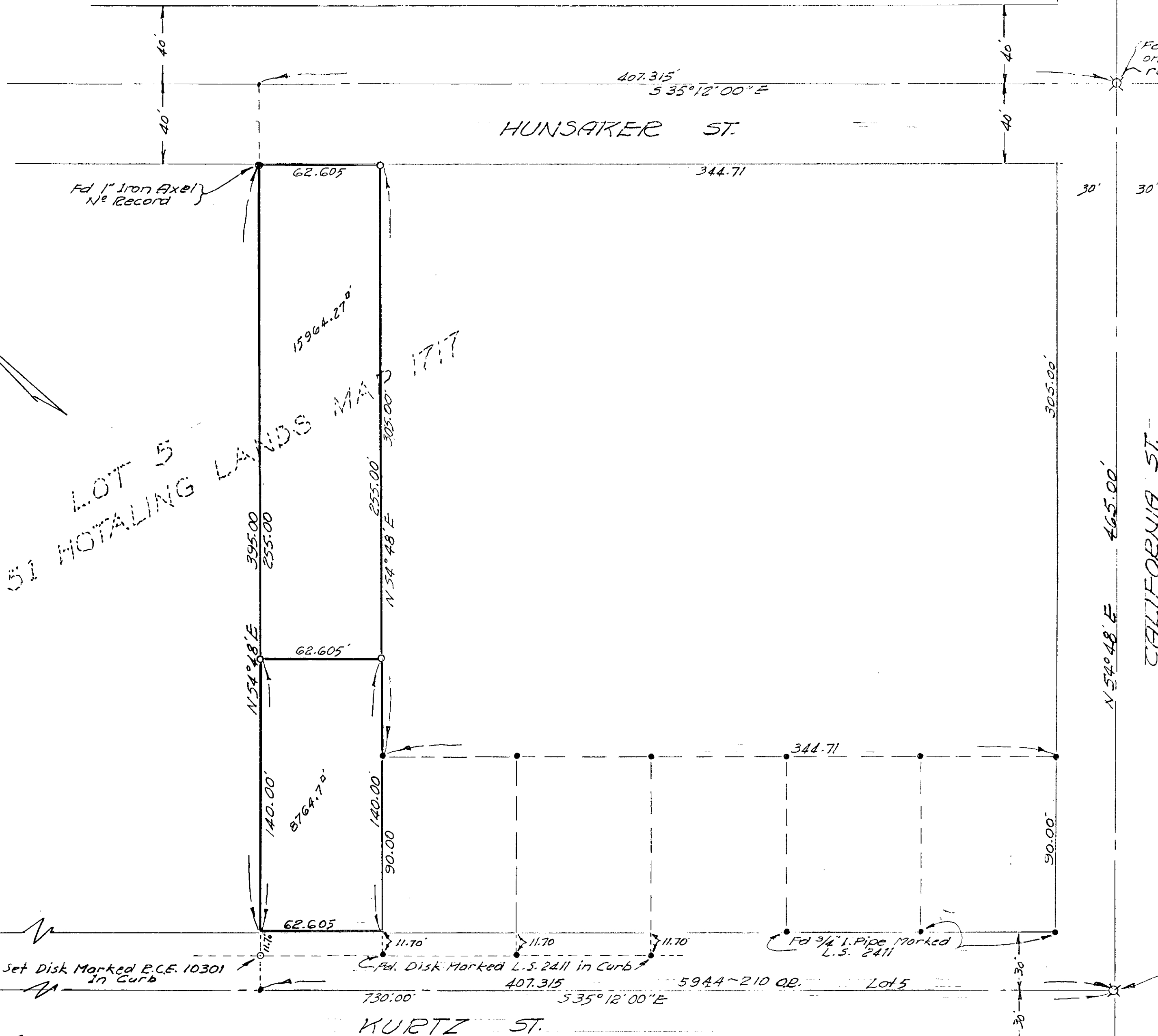


# SPLIT LOT MAP N<sup>o</sup> 207



TRACT 51 HOTELING LANDS MAP 1717  
LOT 5



**LEGEND**  
 • Monuments Fd.  
 ○ 3/4" I. Pipe set with Disk marked R.C.E. 10301 unless otherwise noted.

**BASIS OF BEARINGS.**  
 The center-line of Calif. St. as shown on Belleaire Sub. MAP N<sup>o</sup> 2071  
 I.B. N 54° 48' E

THIS SURVEY WAS MADE UNDER MY SUPERVISION FOR MR. C. DAVIS

SOUTH COAST ENG. SERVICE

By William C. Cuyper  
 R.C.E. # 10301  
 JULY 26, 1959.

Fd. 1" Iron Axel Set for Lot Cor of Lot 8 Belleaire Sub. Map N<sup>o</sup> 2071

Set Disk Marked R.C.E. 10301 in Curb

Fd. Disk Marked L.S. 2411 in Curb

Fd. 3/4" I. Pipe Marked L.S. 2411

Fd. Chisel Cuts on M.H. as per City records

Fd. 3/4" I. Pipe Marked R.C.E. 10301

Fd. 3/4" I. Pipe Marked R.C.E. 10301

BELLEAIRE SUB. MAP 2071

<b>APPROVED</b>	
Date	7-31-59
By	Alton S. Ruben
	City Engineer