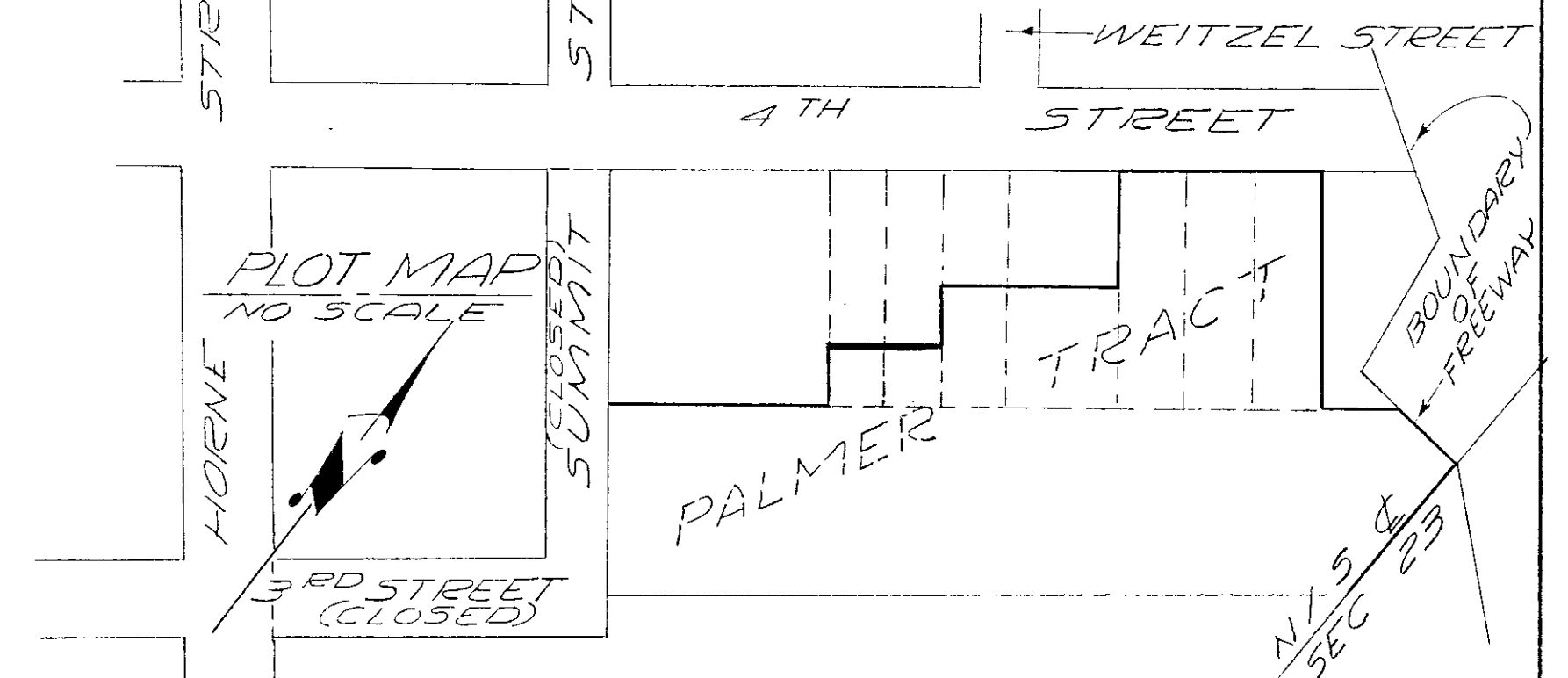
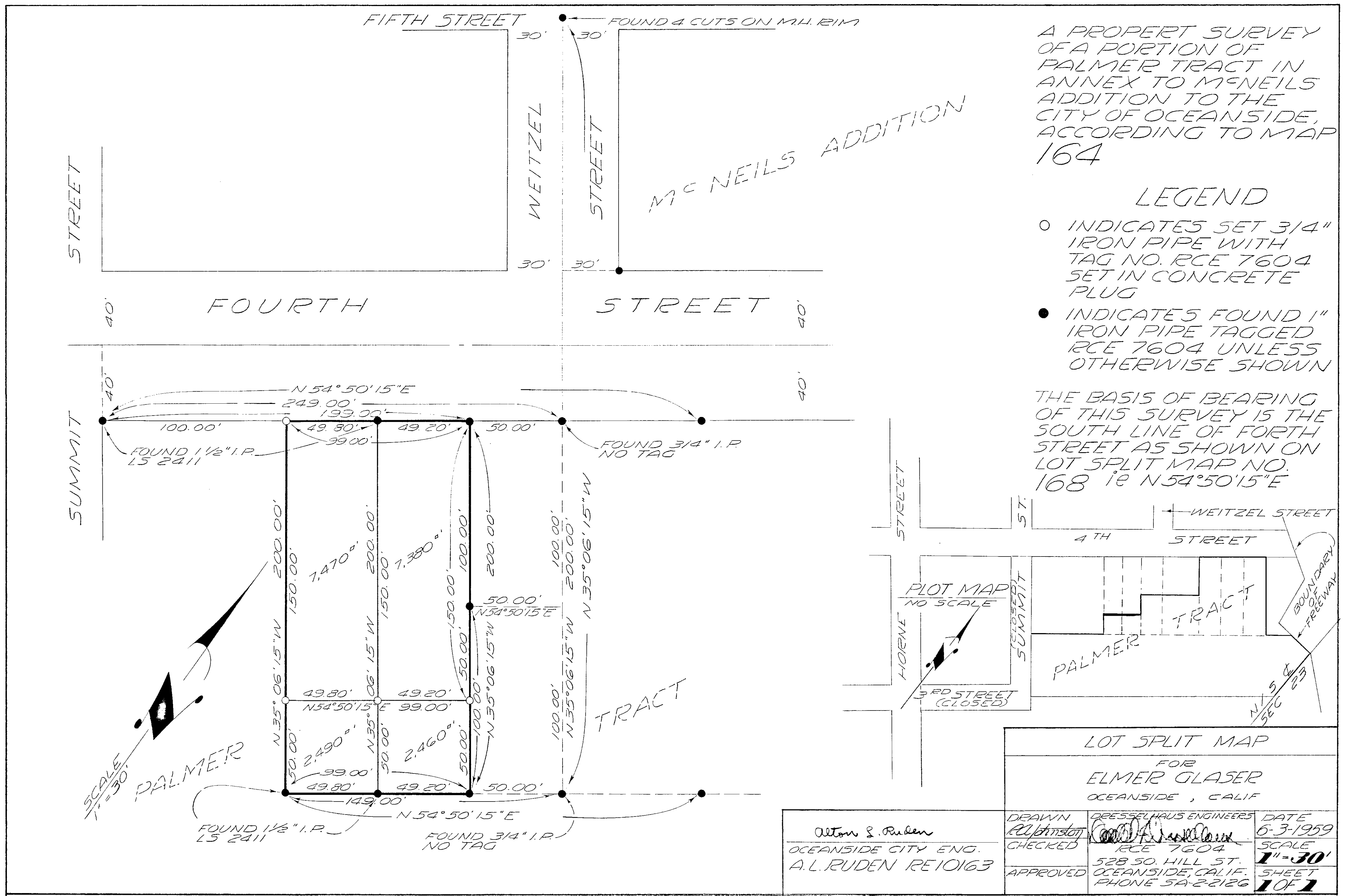


A PROPERT SURVEY OF A PORTION OF PALMER TRACT IN ANNEX TO MCNEILS ADDITION TO THE CITY OF OCEANSIDE, ACCORDING TO MAP 164

LEGEND

- INDICATES SET 3/4" IRON PIPE WITH TAG NO. RCE 7604 SET IN CONCRETE PLUG
- INDICATES FOUND 1" IRON PIPE TAGGED RCE 7604 UNLESS OTHERWISE SHOWN

THE BASIS OF BEARING OF THIS SURVEY IS THE SOUTH LINE OF FORTH STREET AS SHOWN ON LOT SPLIT MAP NO. 168 IS N 54° 50' 15" E



LOT SPLIT MAP FOR ELMER GLASER OCEANSIDE, CALIF		
DRAWN <i>Alton S. Ruden</i>	DRESSLHAUS ENGINEERS <i>Carl A. Dresselhaus</i>	DATE 6-3-1959
CHECKED A.L. RUDEN RE10163	RCE 7604 528 SO. HILL ST. OCEANSIDE, CALIF.	SCALE 1" = 30'
APPROVED	PHONE 5A-22126	SHEET 1 OF 1