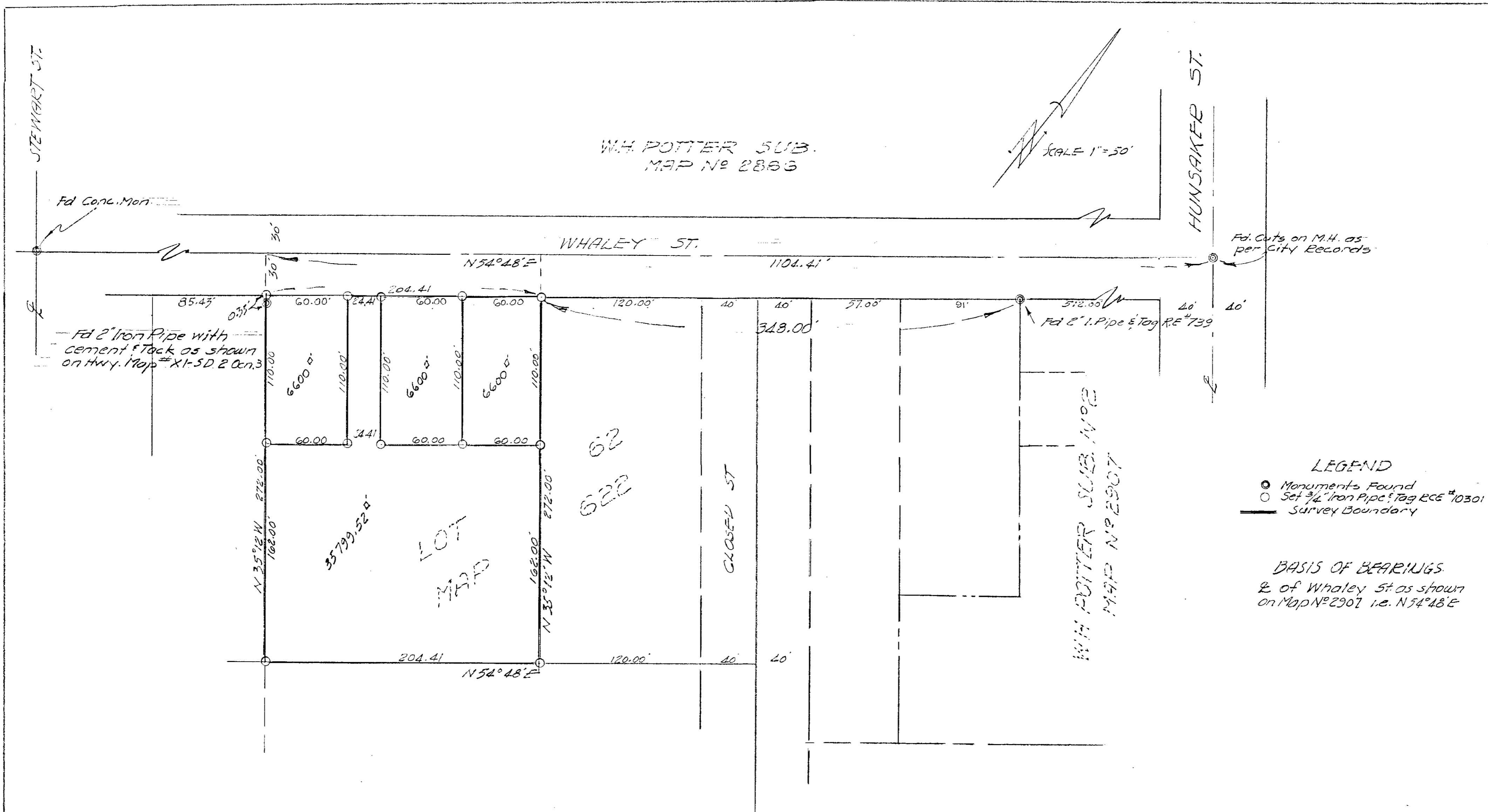


SPLIT LOT NO 200



LEGEND

- Monuments Found
- Set 3/4" Iron Pipe & Tag RCE #10301
- Survey Boundary

BASIS OF BEARINGS
 of Whaley St as shown
 on Map No 2907 i.e. N54°48'E

APPROVED BY THE
 PLANNING COMMISSION
 this 16th day of Feb. 1959
 Resolution No 59-P-19
 Secretary *Ernest A. Taylor*

Approved *Ollan E. Rulon* 4-17-62
 A.L. Rulon - RCE 10163
 CITY ENGINEER

REQUESTED BY <i>W.D. Cole</i>
CITY OF OCEANSIDE
SURVEY OF A PORTION OF LOT 62 SOUTH OCEANSIDE
MAP NO 622
SOUTH COAST ENGINEERING SERVICE <i>William A. Cayan</i> June 23, 1959 RCE 10301 DATE