

MAP 1717 HOTALING LANDS

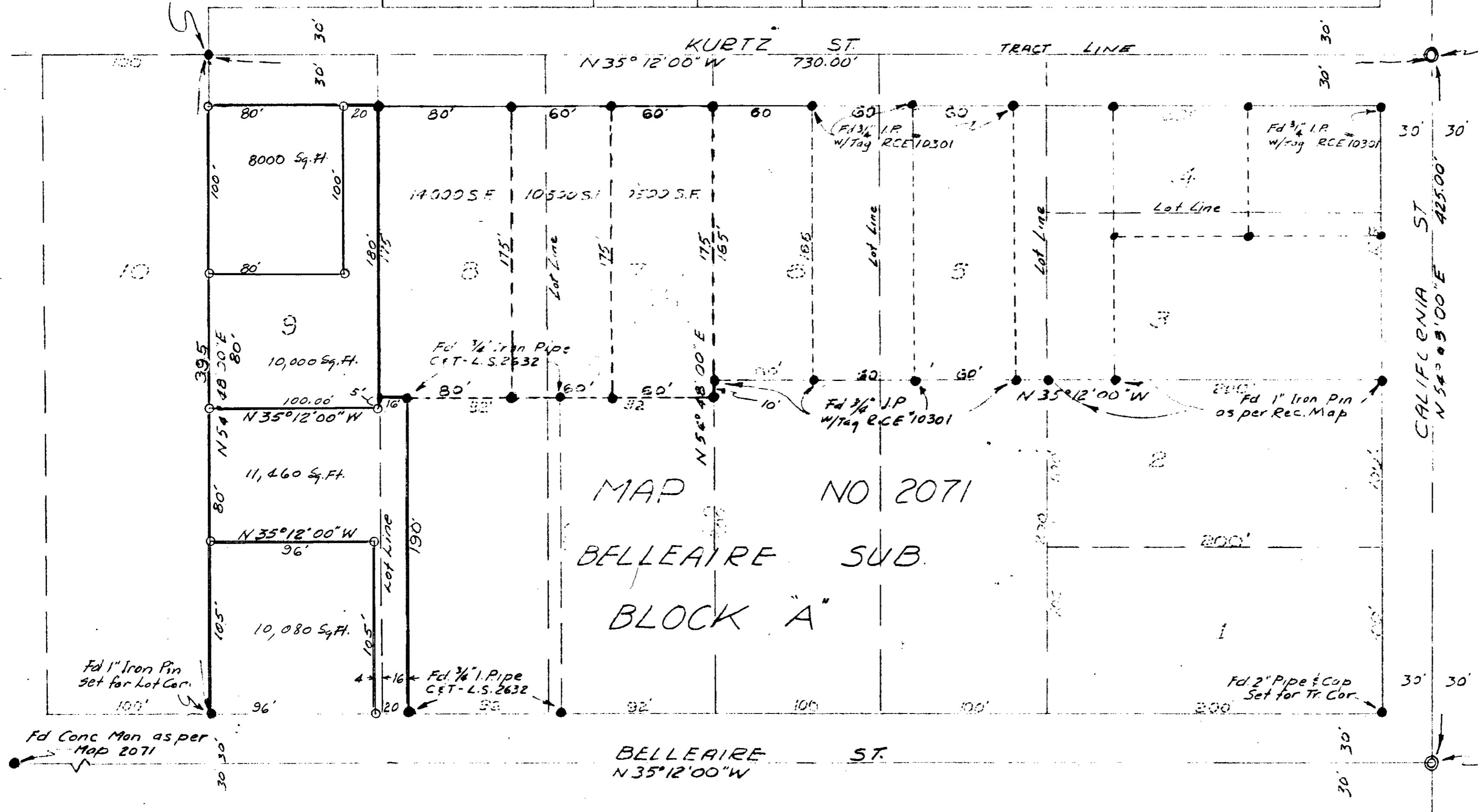
Fd 1" Iron Pin set for Lot Cor as per Rec Map

Fd Cuts on M.H. as per City Records

SCALE 1"=50'

LEGEND
 ● Monuments Found
 ○ Set 3/4" Iron Pipe & Tag RCE 10301
 — Survey Boundary

BASIS OF BEARINGS
 Center Line of California St.
 as shown on Map No 2071
 i.e. N 54° 48' 00" E



MAP NO 2071
 BELLEAIRE SUB.
 BLOCK 'A'

APPROVED BY THE
 PLANNING COMMISSION
 this 20th day of April, 1959
 Resolution No 59-P-33
 as to Lot 9 and per Lot 8
 Secretary Ernest A. Taylor

REQUESTED BY MR. WM. MELIN
 CITY OF OCEANSIDE
 SURVEY OF PORTIONS OF LOTS 9
 & B, BLOCK 'A' BELLEAIRE SUB.
 MAP 2071
 SOUTH COAST ENGINEERING SERVICE
 William A. Coyer
 RCE 10301
 June 1, 1959
 DATE

Approved 6-17-1959 Alton J. Ruden
 A.L. RUDEN - R.C.E. 10163
 CITY ENGINEER