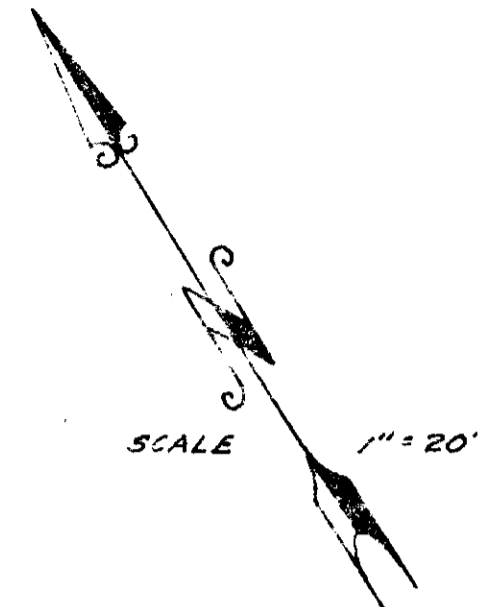
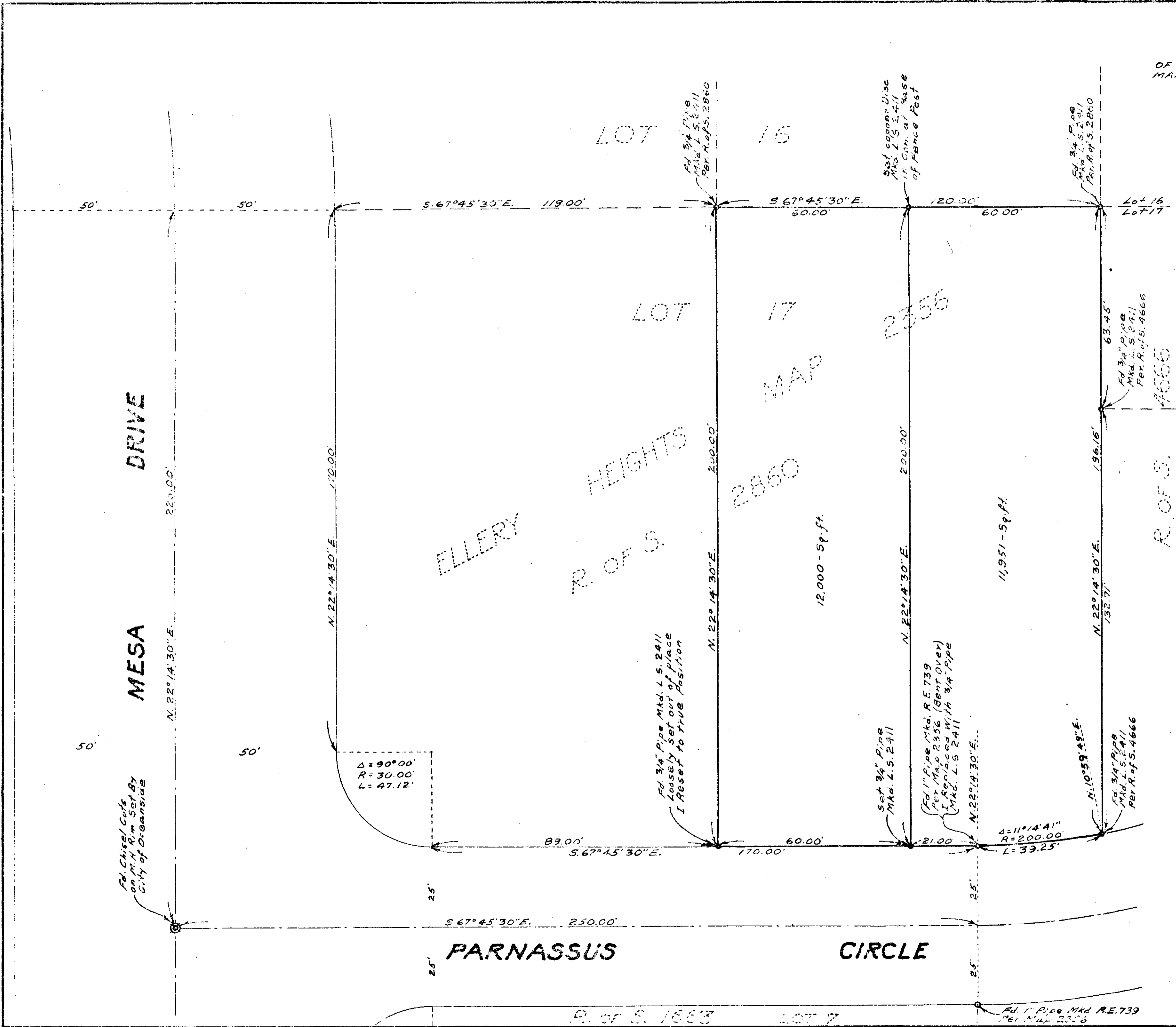


RECORD OF SURVEY  
OF A PORTION OF LOT 17, OF ELLERY HEIGHTS  
MAP 2356 OCEANSIDE CALIFORNIA



THE BASIS OF BEARINGS FOR THIS SURVEY IS THE CENTERLINE OF PARNASSUS CIRCLE AS SHOWN ON MAP 2356 I. E. S. 67° 45' 30" E.

THIS MAP CORRECTLY REPRESENTS A SURVEY MADE BY ME OR UNDER MY DIRECTION IN CONFORMANCE WITH THE REQUIREMENTS OF CHAPTER 15 DIVISION 3 OF THE BUSINESS AND PROFESSIONS CODE AT THE REQUEST OF H. E. WOOTTON, IN APRIL 1959

James A. Hubbell  
L.S. 2411

APPROVED  
Date 5-29-59  
By *Allen F. Riden*  
City Engineer

APPROVED BY THE PLANNING COMMISSION  
this 2nd day of Mar. 1959  
Resolution No. 59-P22

Secretary *Ernest O. Taylor*

LS-196

Haston

15-A