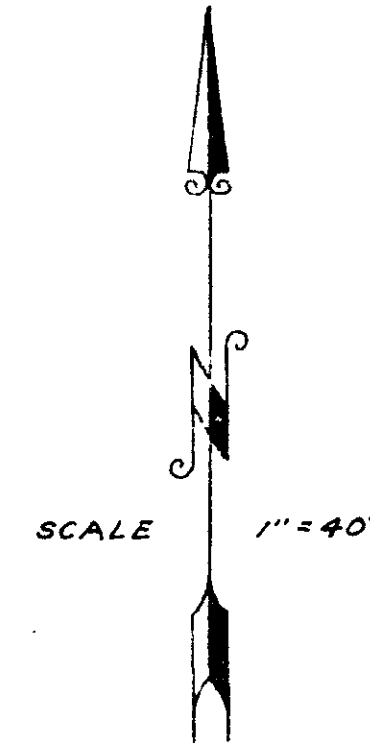


RECORD OF SURVEY  
 OF A PORTION OF THE N.E. 1/4 OF THE S.E. 1/4 OF SEC. 24 T.11S. R.5W. S.B.M. OCEANSIDE, CALIFORNIA



THE BASIS OF BEARINGS FOR THIS SURVEY IS THE CENTERLINE OF MAC DONALD STREET AS SHOWN IN DEED BOOK 1723 PAGE 363 I.E. S. 89° 59' 20" E.

NOTE: SET 3/4" PIPE AND COPPER DISC MARKED L.S. 2411 AT ALL POINTS SHOWN THUS O UNLESS OTHERWISE NOTED

THIS MAP CORRECTLY REPRESENTS A SURVEY MADE BY ME OR UNDER MY DIRECTION IN CONFORMANCE WITH THE REQUIREMENTS OF CHAPTER 15 OF DIVISION 3 OF THE BUSINESS AND PROFESSIONS CODE AT THE REQUEST OF K.R. WOODARD (IN MARCH 1959) AND R.J. LE GRAW

*James A. Isbell*  
 L.S. 2411

THIS MAP HAS BEEN EXAMINED FOR CONFORMANCE WITH THE REQUIREMENTS OF CHAPTER 15 OF DIVISION 3 OF THE BUSINESS AND PROFESSIONS CODE THIS ... DAY OF ... 1959

..... COUNTY SURVEYOR  
 BY ..... ASSISTANT

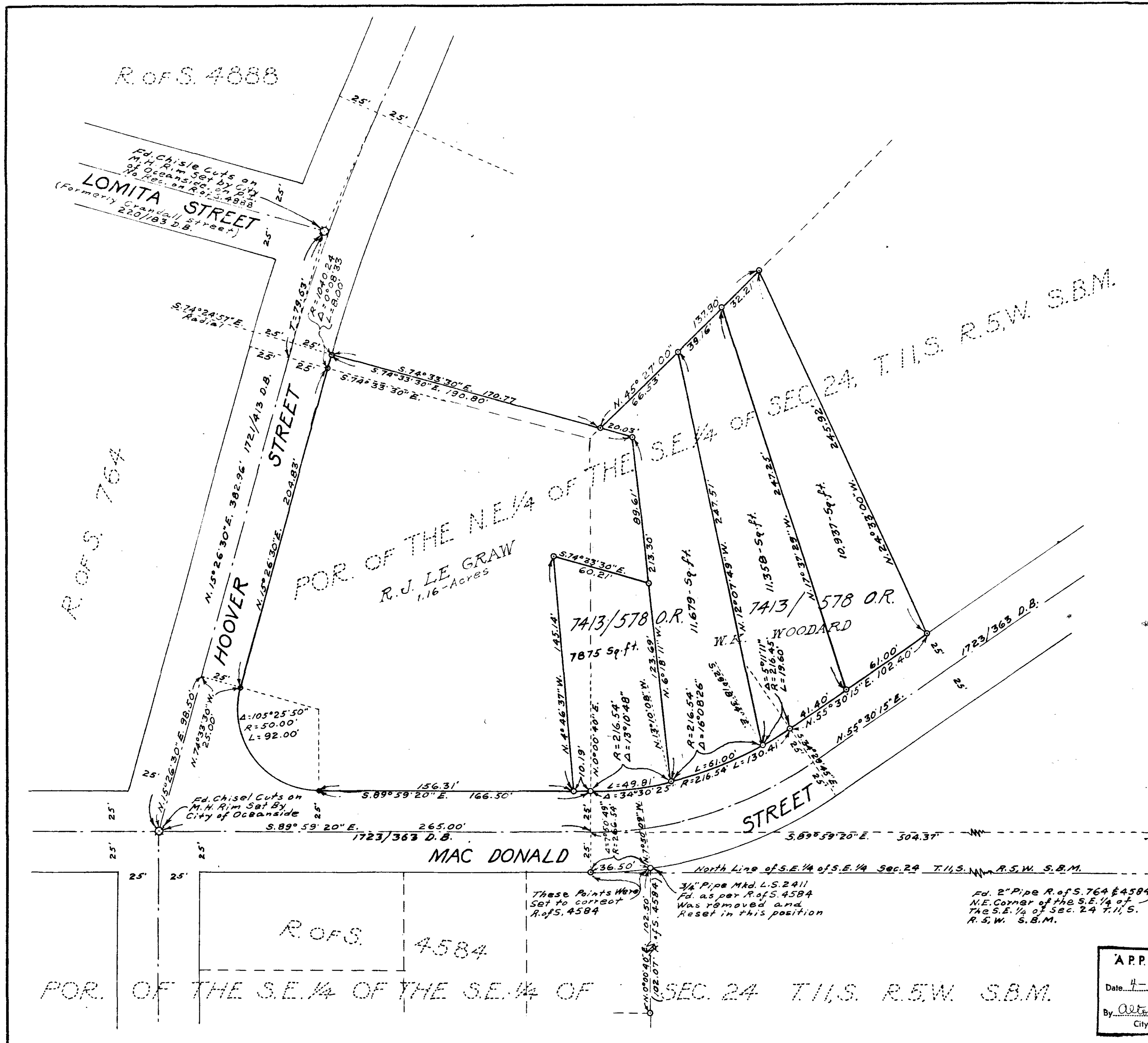
FILE No. ....  
 FILED FOR RECORD THIS ... DAY OF ...  
 1959 AT ... M. IN BOOK ... OF ... AT PAGE ...  
 AT THE REQUEST OF JAMES A. ISBELL  
 FEE \$5.00  
 ROGER N. HOWE COUNTY RECORDER  
 BY ..... DEPUTY

THIS SURVEY WAS MADE FOR 2 SEPERATE OWNERS AND FOR CONVENIENCE BOTH SURVEYS ARE SHOWN ON THIS MAP

*James A. Isbell*  
 L.S. 2411

APPROVED  
 Date 4-22-59  
 By *Alton S. Ruden*  
 City Engineer

13-36-824



*Woodard & Le Graw 5-A 15-19*