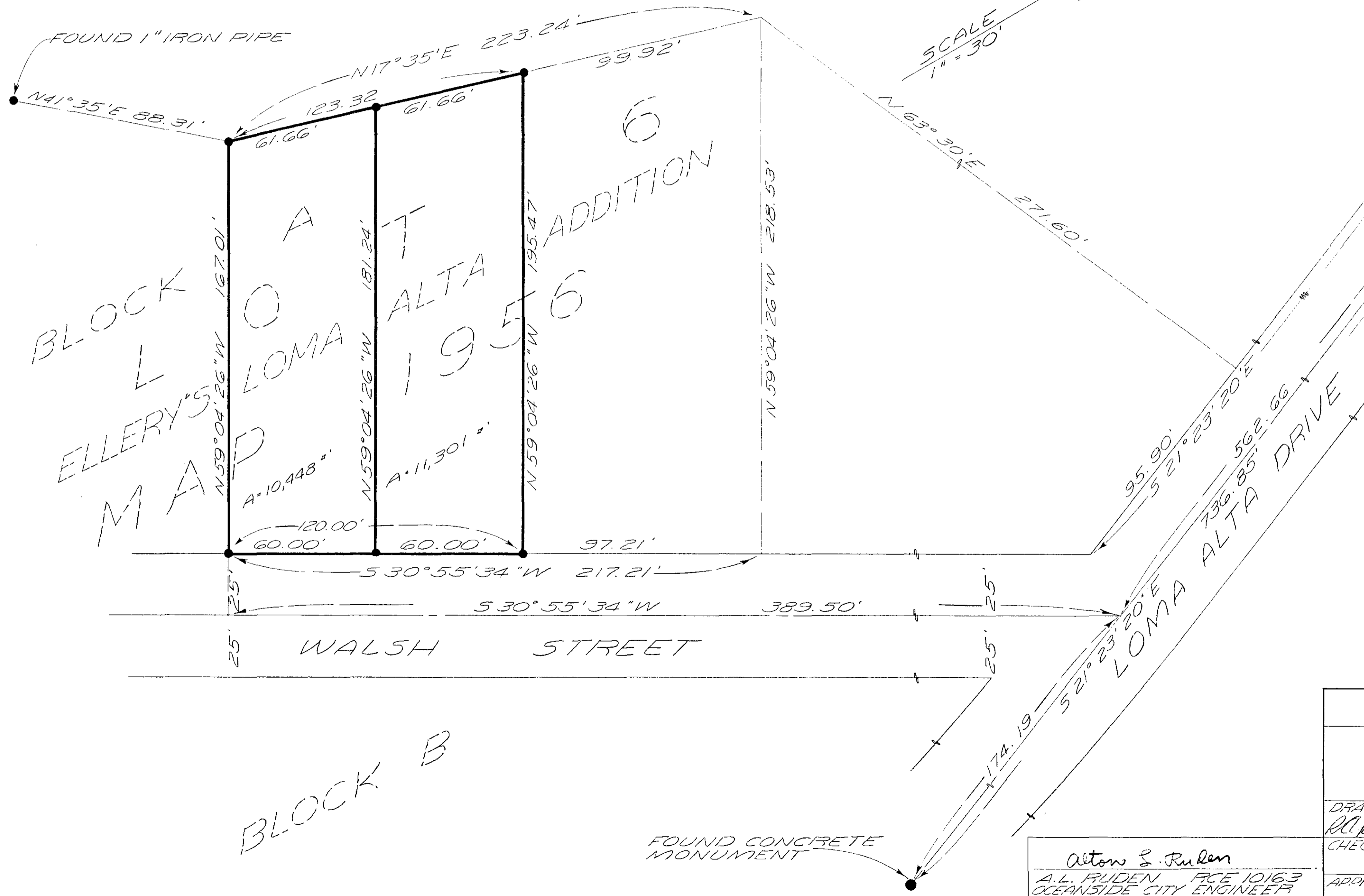


LOT SPLIT MAP NO 190

A PROPERTY SURVEY
OF A PORTION OF LOT
6 BLOCK "A" ELLERY'S
LOMA ALTA ADDITION
MAP NO. 1956

—LEGEND—

- INDICATES FOUND
3/4" IRON PIPE
L.S. 2632
UNLESS OTHERWISE SHOWN



BASIS OF BEARING
OF THIS SURVEY IS THE
CENTER LINE OF WALSH
STREET, SOUTH OF
LOMA ALTA DRIVE. i.e
S 30°55'34"W AS
SHOWN ON ELLERY'S
LOMA ALTA ADDITION
MAP NO. 1956
DISTANCES ARE ACCORDING
TO WEEKS UNRECORDED
SURVEY

LOT SPLIT MAP		
FOR		
MR R.A. MCGILL		
DRAWN <i>R. A. Winston</i>	DRESSELHAUS ENGINEERS <i>Donald F. Dresselhaus</i>	DATE 4-10-1959
CHECKED	FACE 1604	SCALE 1" = 30'
APPROVED <i>Alton E. Ruker</i>	528 50 HILL STREET OCEANSIDE, CALIF. PH 5A 2 2126	SHEET 1 OF 1

Alton E. Ruker
A.L. RUDEN FCE 10163
OCEANSIDE CITY ENGINEER
APRIL - 16 - 1959