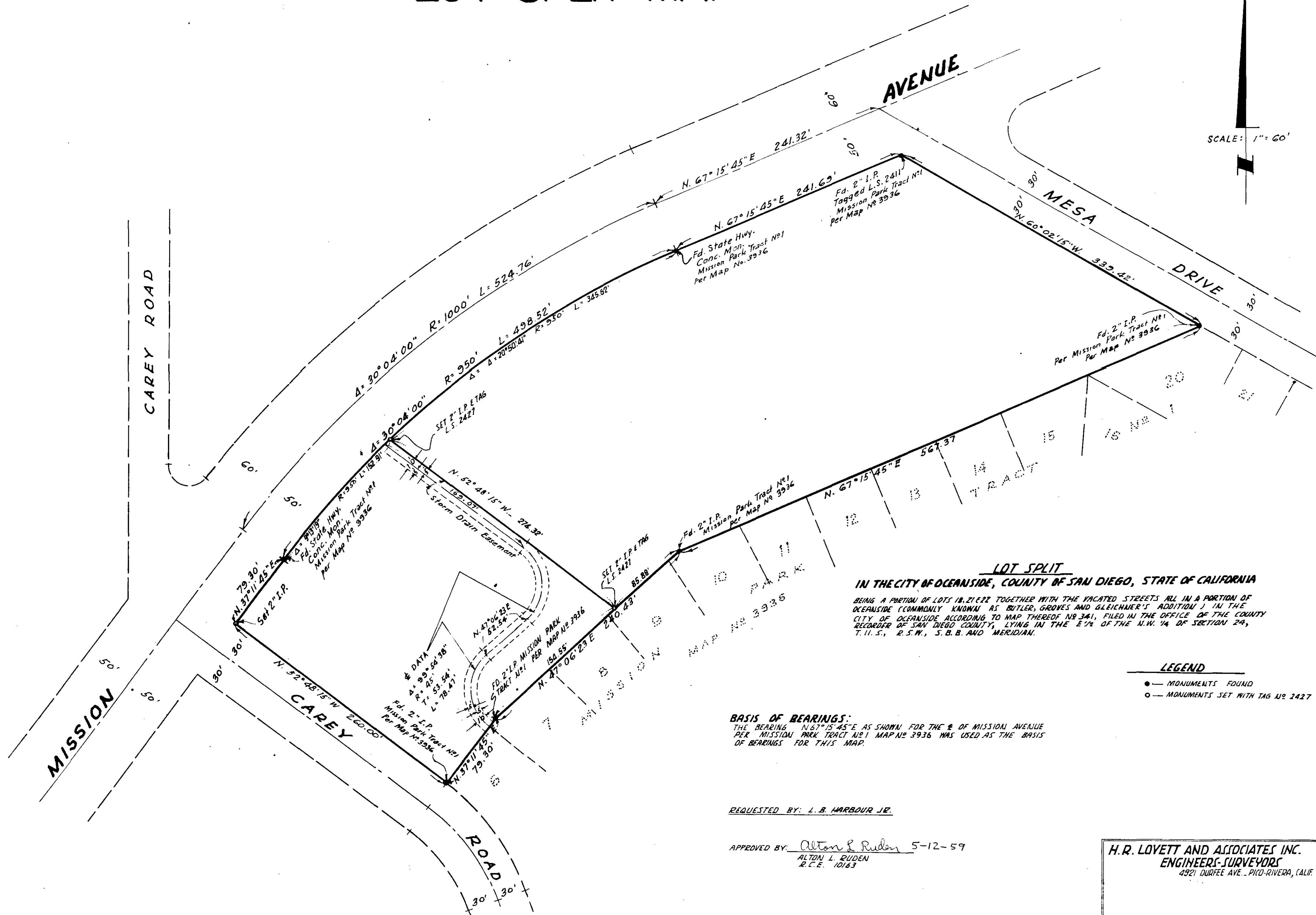


LOT SPLIT MAP

SCALE: 1" = 60'



LOT SPLIT
IN THE CITY OF OCEANSIDE, COUNTY OF SAN DIEGO, STATE OF CALIFORNIA
 BEING A PARTIAL OF LOTS 18, 21 & 22 TOGETHER WITH THE VACATED STREETS ALL IN A PARTIAL OF OCEANSIDE (COMMONLY KNOWN AS BUTLER, GROVES AND GLEICHNER'S ADDITION) IN THE CITY OF OCEANSIDE ACCORDING TO MAP THEREOF NO 341, FILED IN THE OFFICE OF THE COUNTY RECORDER OF SAN DIEGO COUNTY, LYING IN THE E 1/4 OF THE N.W. 1/4 OF SECTION 24, T. 11. S., R. 5. W., S. B. B. AND MERIDIAN.

LEGEND
 ● — MONUMENTS FOUND
 ○ — MONUMENTS SET WITH TAG NO 2427

BASIS OF BEARINGS:
 THE BEARING N 67° 15' 45" E AS SHOWN FOR THE E OF MISSION AVENUE PLEX MISSION PARK TRACT NO 1 MAP NO 3936 HAS BEEN USED AS THE BASIS OF BEARINGS FOR THIS MAP.

REQUESTED BY: L. B. HARBOUR JR.
 APPROVED BY: Alton L. Ruden 5-12-59
 ALTON L. RUDEN
 R.C.E. 10163

H. R. LOVETT AND ASSOCIATES INC.
 ENGINEERS-SURVEYORS
 4921 DURFEE AVE., PICO-RIVERA, CALIF.

L.B. Harbour Jr. 15-15-1959