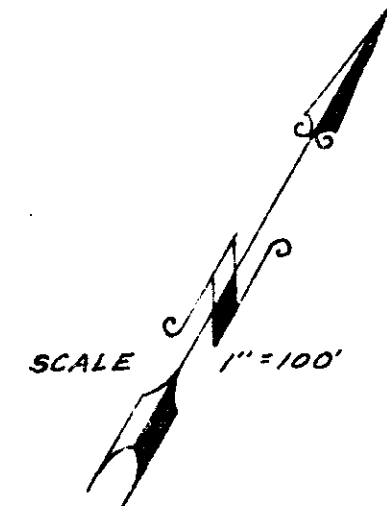


**RECORD OF SURVEY**  
 OF A PORTION OF THE N.W. 1/4 OF THE N.E. 1/4 OF SEC. 25  
 T.11.S. R.5.W. S.B.M. AND A PORTION OF LAGUNA PARK  
 MAP 1171 OCEANSIDE, CALIFORNIA



THE BASIS OF BEARINGS FOR THIS SURVEY IS THE CENTERLINE OF CROUCH STREET AS SHOWN ON R.O.F.S. MAP 2857 I.B. N. 2°51'15" W.

NOTE: - SET 3/4" PIPE AND COPPER DISCS STAMPED L.S. 2411 AT ALL POINTS SHOWN THUS O UNLESS OTHERWISE NOTED FOUND PIPE AND COPPER DISCS STAMPED L.S. 2411 AS PER R.O.F.S. 2857 AT ALL POINTS SHOWN THUS ● UNLESS OTHERWISE NOTED

THIS MAP CORRECTLY REPRESENTS A SURVEY MADE BY ME OR UNDER MY DIRECTION IN CONFORMANCE WITH THE REQUIREMENTS OF CHAPTER 15 DIVISION 3 OF THE BUSINESS AND PROFESSIONS CODE AT THE REQUEST OF EDWARD OPIAT IN MARCH 1959  
*James A. Isbell*  
 L.S. 2411

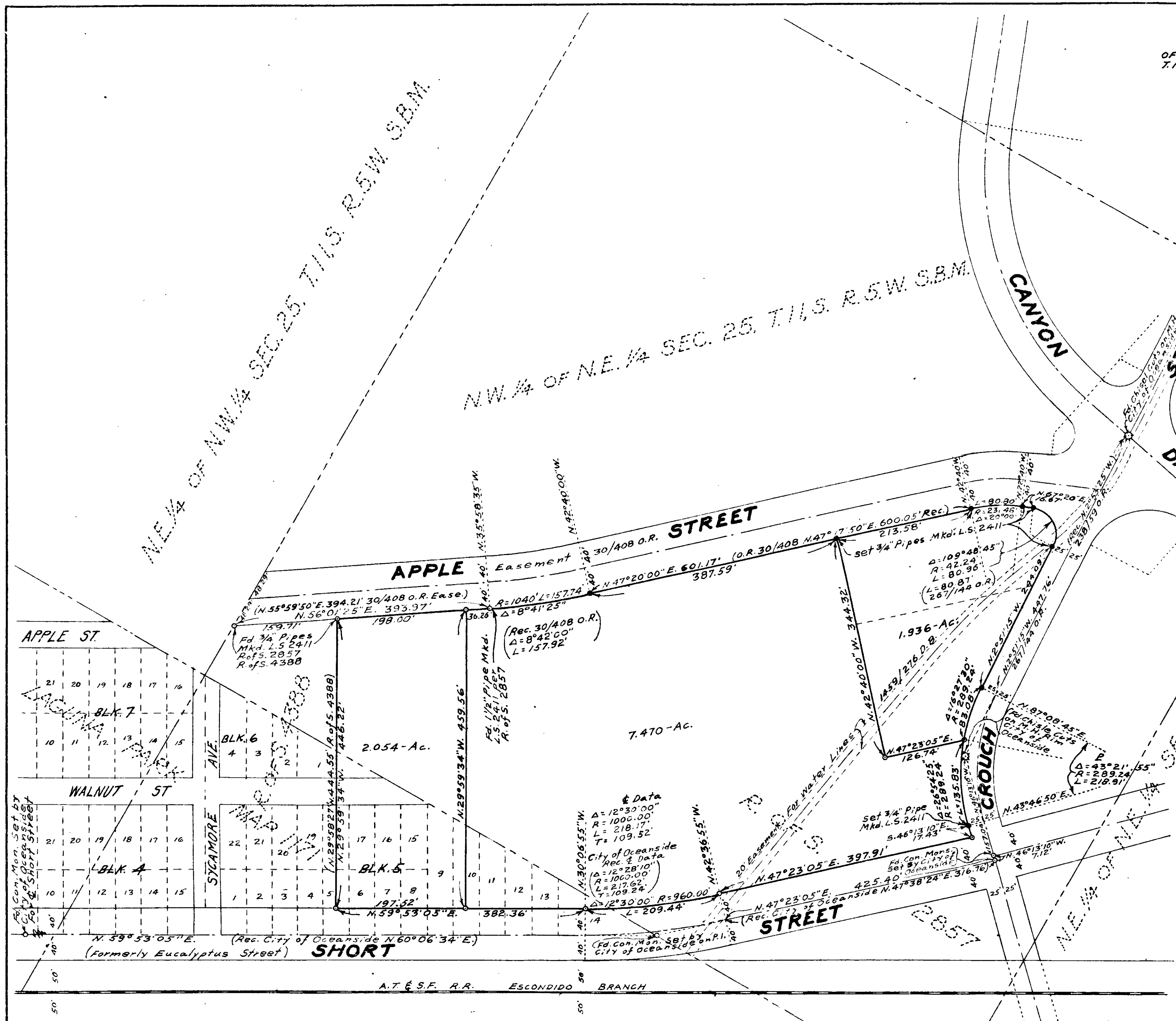
THIS MAP HAS BEEN EXAMINED FOR CONFORMANCE WITH THE REQUIREMENTS OF CHAPTER 15 OF DIVISION 3 OF THE BUSINESS AND PROFESSIONS CODE THIS DAY OF \_\_\_\_\_ 1959

..... COUNTY SURVEYOR  
 BY..... ASSISTANT

FILE NO. \_\_\_\_\_ DAY OF \_\_\_\_\_  
 FILED FOR RECORD THIS \_\_\_\_\_ 1959 AT \_\_\_\_\_ M. IN BOOK \_\_\_\_\_  
 OF \_\_\_\_\_ AT PAGE \_\_\_\_\_ AT THE REQUEST OF  
 JAMES A. ISBELL  
 ROGER N. HOWE COUNTY RECORDER

BY..... DEPUTY

**APPROVED**  
 Date 4-9-59  
 By *Alton P. Ruden*  
 City Engineer



LS-1811 Opiat 15-9