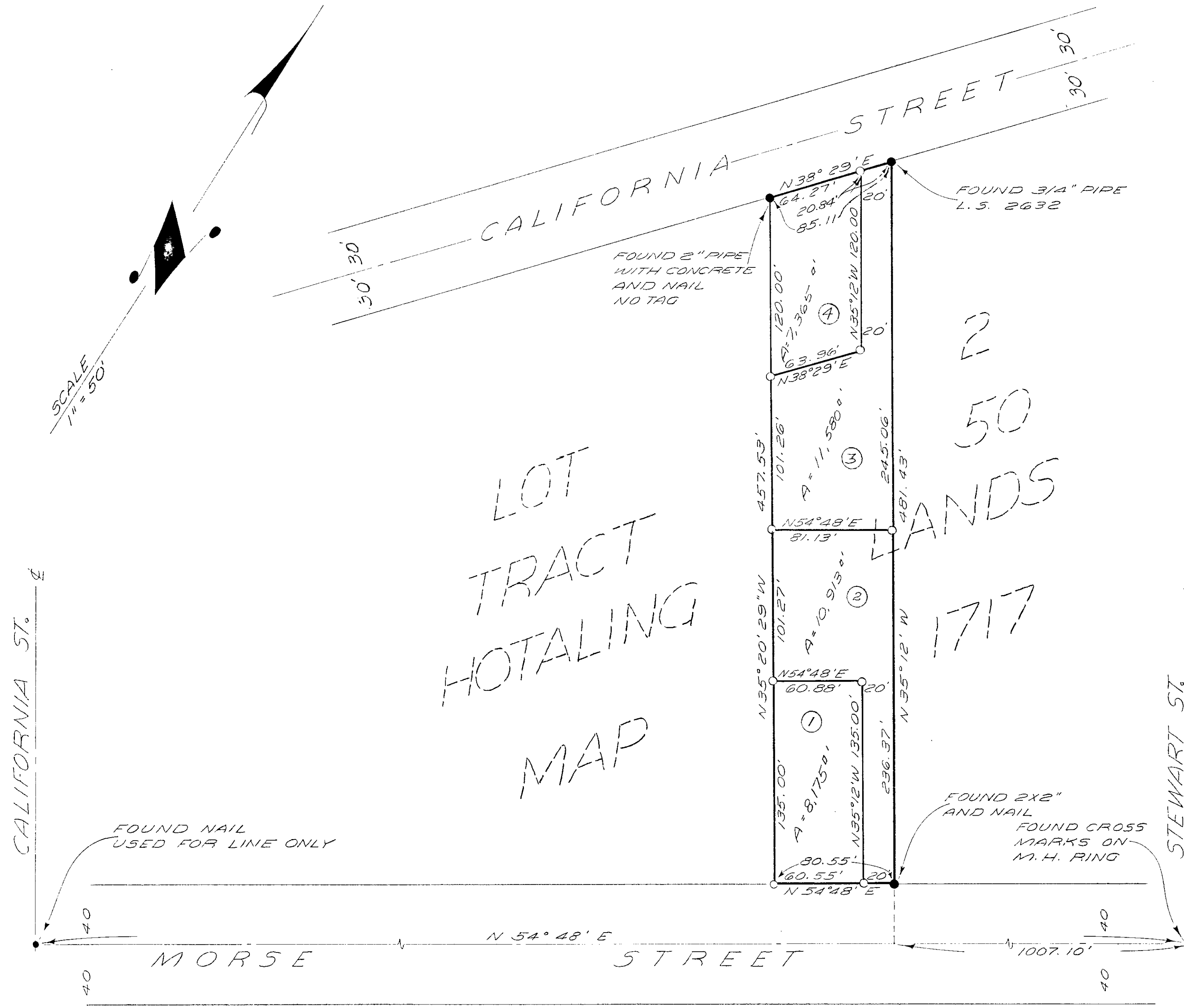


A SURVEY OF A PORTION OF LOT 2 OF TRACT 50 OF HOTELING LANDS AS SHOWN ON MAP 1717 OCEANSIDE, CALIFORNIA



LEGEND

- INDICATES FOUND AS SHOWN
- INDICATES SET 3/4" PIPE WITH CONCRETE PLUG AND BRASS TAG NO. RCE 7604
- INDICATES LOT SPLIT LINE

BASIS OF BEARING IS THE CENTERLINE OF MORSE STREET I.E. N 54° 48' E AS SHOWN ON OCEANSIDE LOT SPLIT MAP NO. 143

SCALE
1" = 50'

LOT
TRACT
HOTELING
MAP

2
50
LANDS
1717

LOT SPLIT		
FOR HARVEY SCHWARZ		
DRAWN RA Johnston	DRESSELHAUS ENGINEERS Dresselhaus	DATE 1-20-59
CHECKED W.P. [Signature]	RCE 7604	SCALE 1" = 50'
APPROVED	528 SO. HILL ST. OCEANSIDE, CAL. PH. SA-2-2126	SHEET 1 OF 1

APPROVED BY THE PLANNING COMMISSION
this 2nd day of March, 1959
Resolution No. 59-P-23
Secretary *Ann D. Taylor*

Alton L. Ruden
OCEANSIDE CITY ENG.
A.L. RUDEN RCE 10163