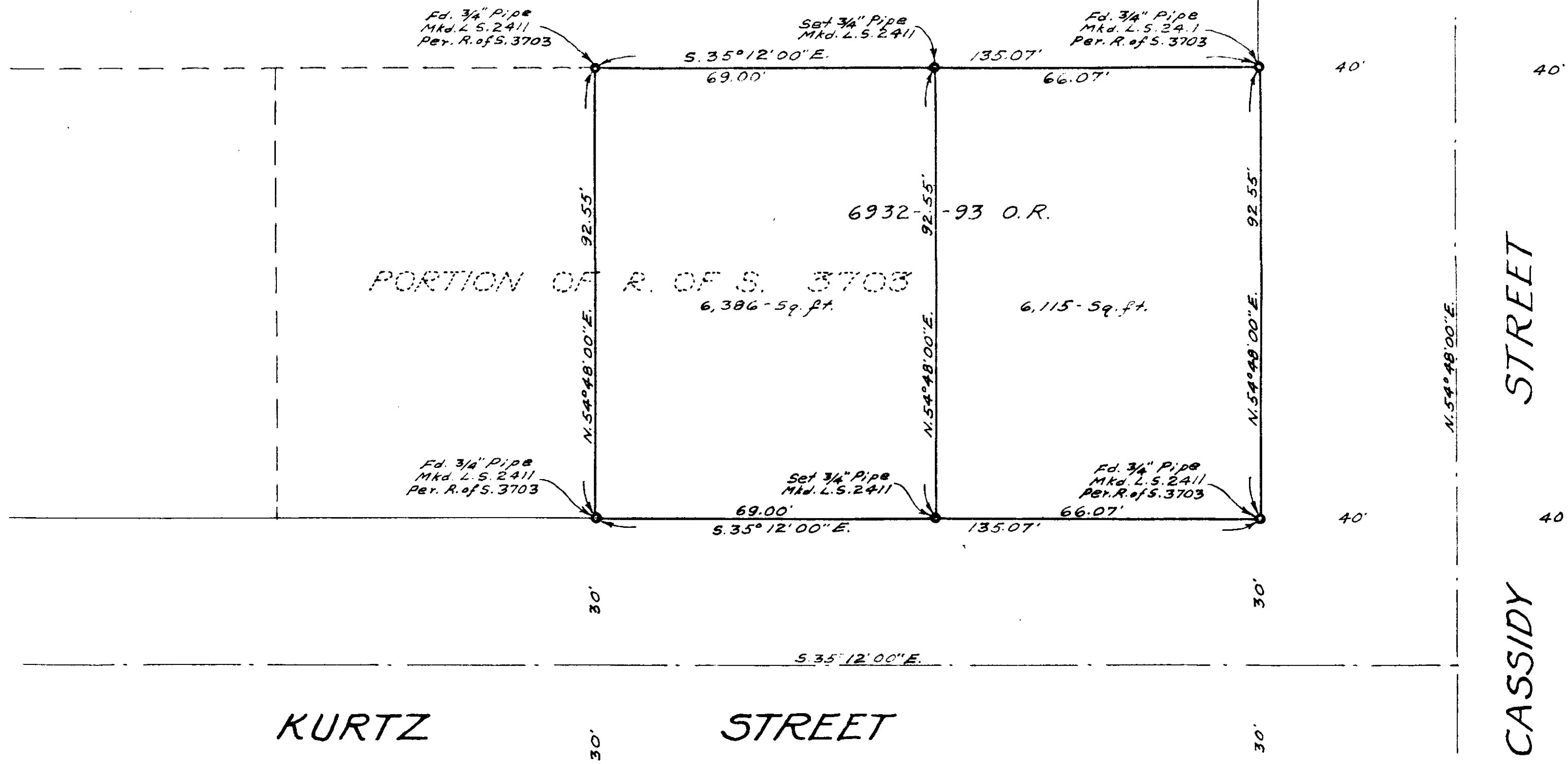
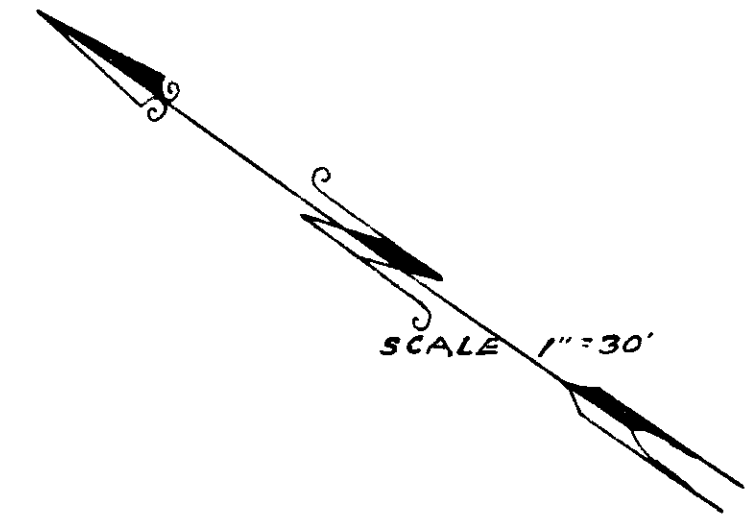


PORTION OF TRACT 62 HOTELING LANDS MAP 1717



RECORD OF SURVEY
 OF A PORTION OF TRACT 62 OF HOTELING LANDS
 MAP 1717 OCEANSIDE CALIFORNIA, BEING ALSO A
 PORTION OF R. OF S. 3703



THE BASIS OF BEARINGS FOR THIS SURVEY IS THE
 CENTERLINE OF CASSIDY STREET AS SHOWN ON
 R. OF S. MAP 3703 I. E. N. 54° 48' 00" E.

THIS MAP CORRECTLY REPRESENTS A SURVEY MADE BY
 ME OR UNDER MY DIRECTION IN CONFORMANCE WITH
 THE REQUIREMENTS OF CHAPTER 15 DIVISION 3 OF THE
 BUSINESS AND PROFESSIONS CODE AT THE REQUEST
 OF G. A. TRIMBLE IN FEBRUARY 1959

James A. Isbell
 L.S. 2411

TRACT 63 MAP 1717

Approved 2-19-59
 Anton S. Ruben

PORTION OF R. OF S. 3665

Trimble LS-1181-1 151