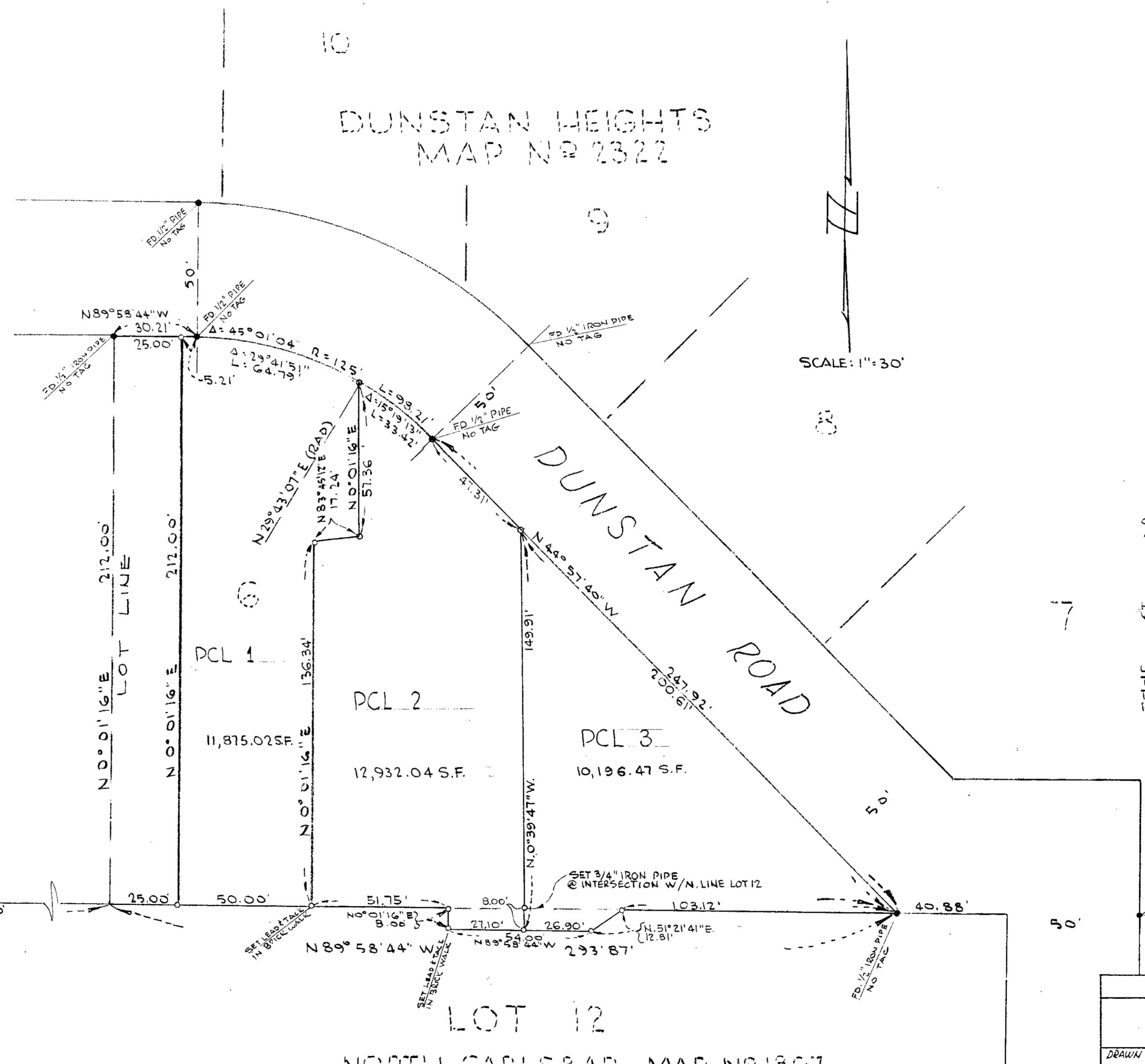


DUNSTAN HEIGHTS  
MAP NO 2322

LOT 12  
NORTH CARLSBAD MAP NO 1807



SCALE: 1"=30'

**SPLIT LOT SURVEY**  
OF A PORTION OF LOT 6, DUNSTAN HEIGHTS  
MAP NO 2322 AND A PORTION OF LOT 12  
NORTH CARLSBAD, MAP NO 1807.

**BASIS OF BEARINGS**  
THE NORTH EAST LINE OF LOT 6, DUNSTAN HEIGHTS - MAP NO 2322 SHOWN AS N.44°51'40"W. WAS USED AS THE BASIS OF BEARINGS.

THIS MAP CORRECTLY REPRESENTS A SURVEY MADE UNDER MY SUPERVISION IN CONFORMANCE WITH THE REQUIREMENTS OF CHAPTER 15, DIVISION 3, OF THE BUSINESS AND PROFESSIONAL CODE AT THE REQUEST OF HAROLD E. BIERCE.

IN NOVEMBER 1958.

*Donald H. Holly*

DONALD H. HOLLY L.S. 2940

- INDICATES MONUMENTS FOUND
- INDICATES SET 3/4" IRON PIPE UNLESS OTHERWISE INDICATED.

APPROVED  
*Alton S. Ruden*  
OCEANSIDE CITY ENGINEER - A.L. RUDEN R.C.E. 10163

<b>LOT SPLIT</b>		
PREPARED FOR <b>HAROLD E. BIERCE</b>		
DRAWN L.D.T.	KAMPTNER & HOLLY - SURVEYORS -	DATE 11-26-58
CHECKED D.H.H.	<i>Donald H. Holly</i> DONALD H. HOLLY L.S. 2940	SCALE 1"=30'
APPROVED D.H.H.	529 ELM AVENUE CARLSBAD, CALIFORNIA PARKWAY - 91695	SHEET 1

KAMPTNER AND HOLLY  
SURVEYORS

*Harold E. Bierce* 15-A 15-174  
522-58