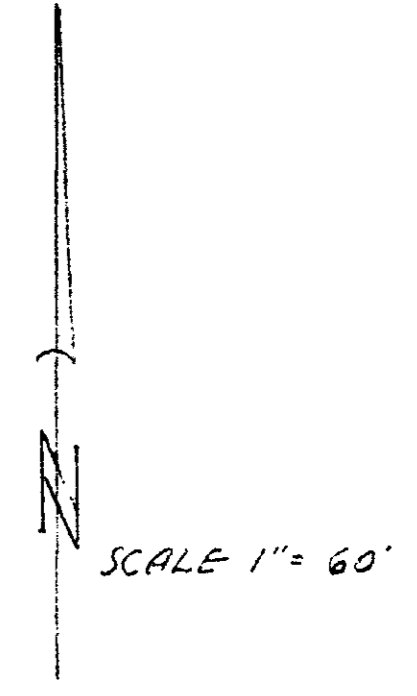
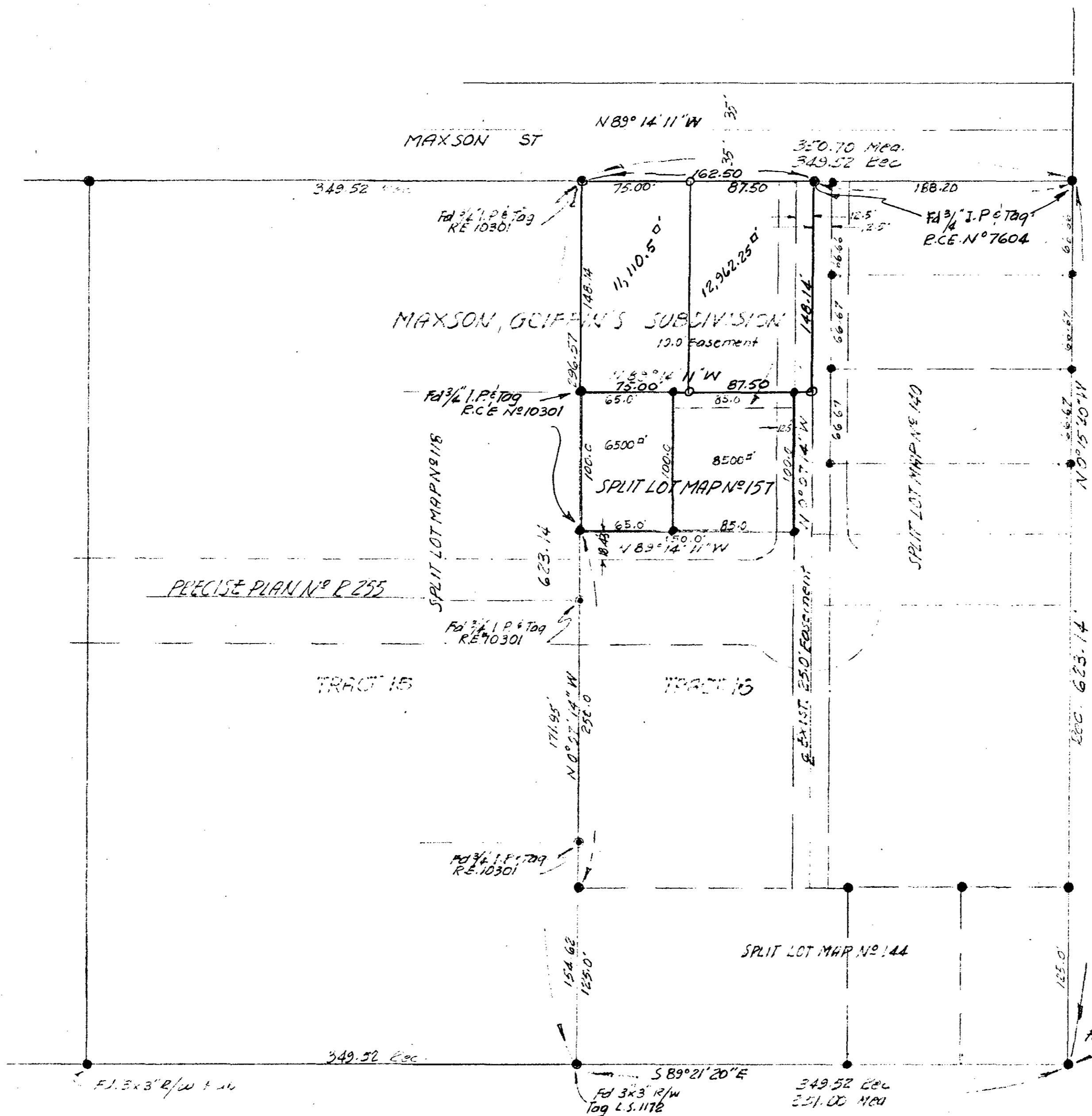


SPLIT LOT MAP NO 171



Basis of Bearings: E Maxson St. N 89° 14' 11" W

- Set 3/4" Iron Pipe & Tag R.E. 10301
- Monuments Found

REQUESTED BY S. G. THOMPSON
 CITY OF OCEANSIDE
 PORTION OF TRACT NO 16
 MAXSON & GRIFFIN'S SUB. MAP 433
 SOUTH COAST ENG SERVICE
 ENGINEER: William A. [Signature] R.C.E. NO 10301
 DATE 1/3/52

Approved
 DATE
 Alton E. Ruden
 OCEANSIDE - CITY ENG. R.C.E. 10163