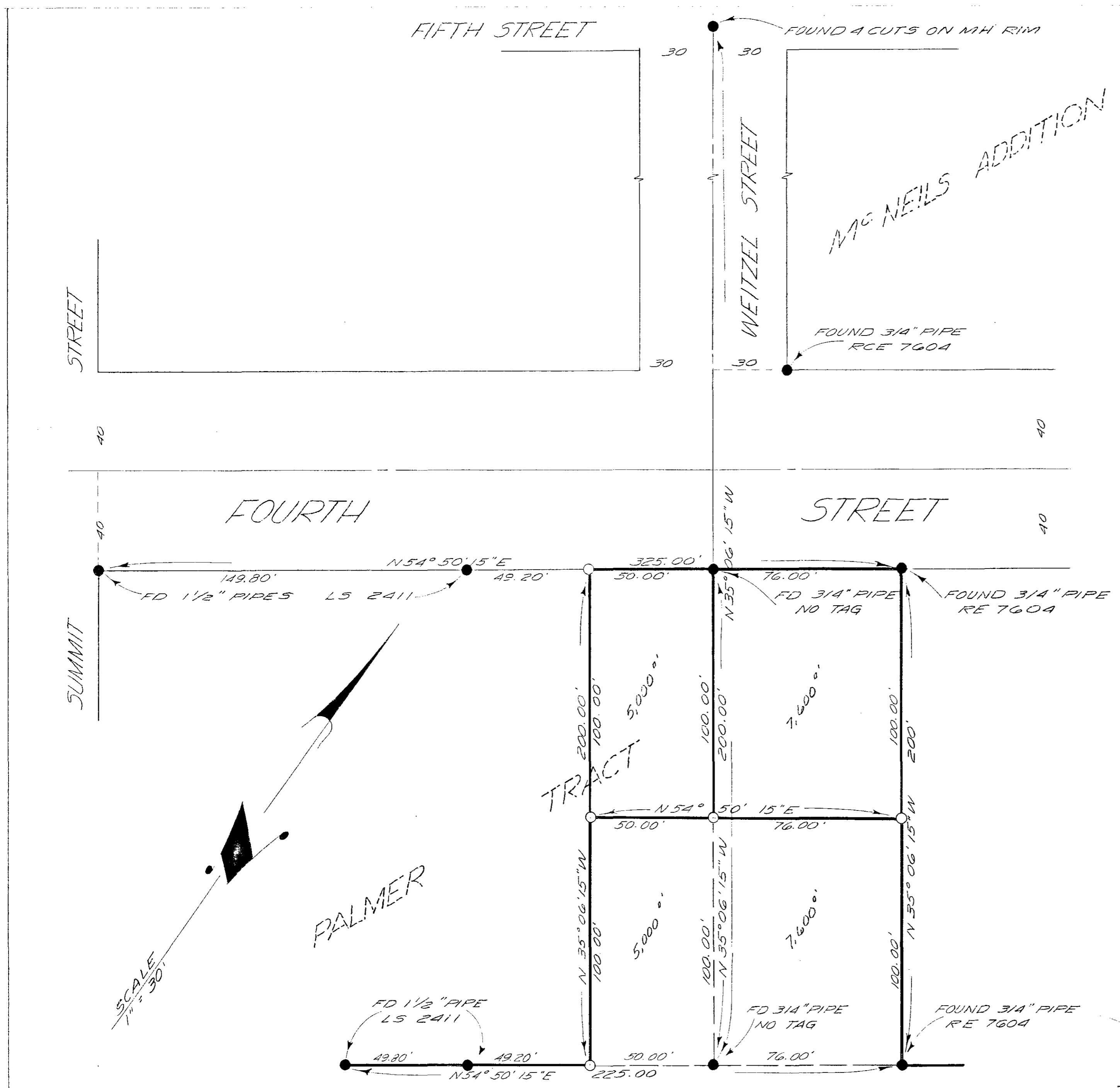
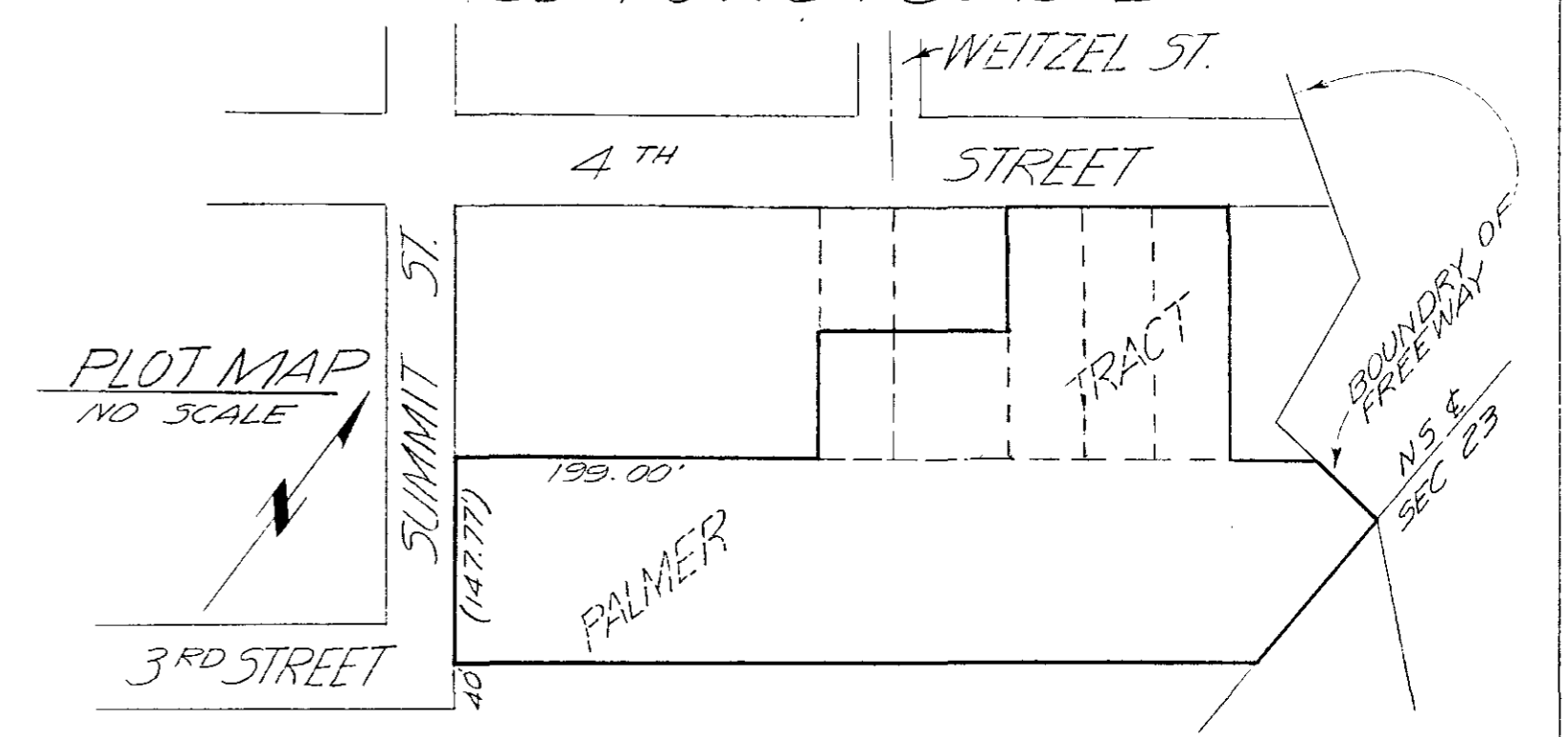


A PROPERTY SURVEY OF A PORTION OF PALMER TRACT IN ANNEX TO McNEIL'S ADDITION TO THE CITY OF OCEANSIDE, ACCORDING TO MAP NO. 164.

LEGEND

- INDICATES SET 1" IRON PIPE WITH TAG NO. RCE 7604 SET IN CONCRETE PLUG
- INDICATES FOUND AS SHOWN

THE BASIS OF BEARING OF THIS SURVEY IS THE SOUTH LINE OF FOURTH STREET AS SHOWN ON LOT SPLIT MAP NO. 123 i.e. N54°50'15"E



SEE PLOT MAP

LOT SPLIT		
FOR ELMER GLASER OCEANSIDE CALIF		
DRAWN RPH	DRESSSELHAUS ENGINEERS RCE 7604	DATE 12-3-58
CHECKED MFM	528 50. HILL ST. OCEANSIDE CAL.	SCALE 1" = 30'
APPROVED ALR	PH 5A-2-2126	SHEET 1 OF 1

Alton S. Ruden  
OCEANSIDE CITY ENGINEER  
A.L. RUDEN RE 10163