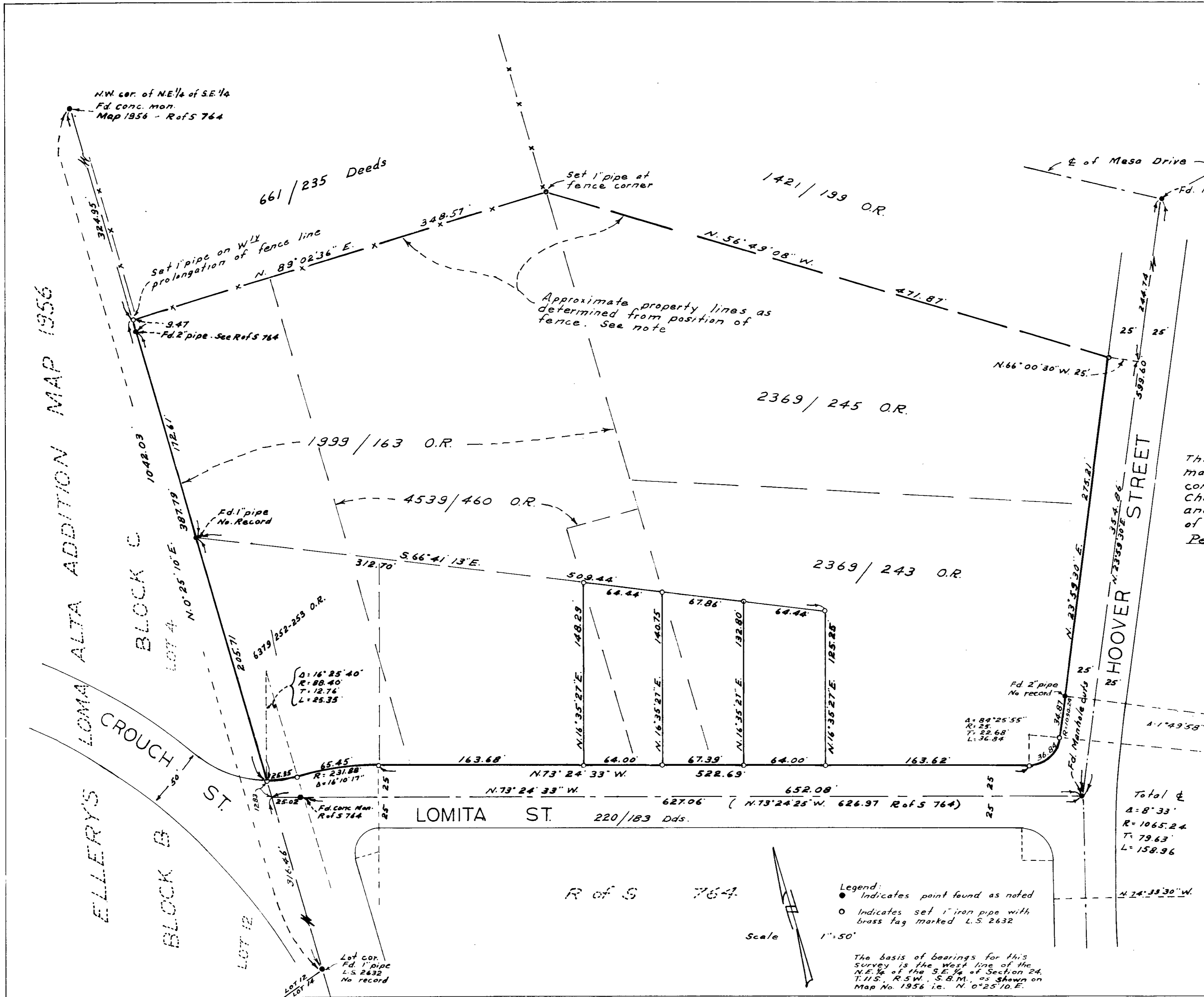


RECORD OF SURVEY
 OF
 A PORTION OF THE NORTHEAST
 QUARTER OF THE SOUTHEAST
 QUARTER OF SECTION 24, T.11S,
 R.5 W., S.B.M., IN THE CITY OF
 OCEANSIDE, COUNTY OF SAN
 DIEGO, STATE OF CALIFORNIA



NOTE:
 The Northerly and Northeasterly
 boundary of land shown hereon
 is indeterminate. All deeds are
 tied directly or indirectly to the
 County Road (Old Survey 44) as it
 existed on July 24, 1914. The map
 of old survey 44 does not show
 enough information to enable it
 to be retraced.

John C. Weeks
 L.S. 2632

This map correctly represents a survey
 made by me or under my direction in
 conformance with the requirements of
 Chapter 15 of Division 3 of the Business
 and Professions code at the request
 of Claude Gallice, John Gallice and
 Peter Isaac in October, 1958.

John C. Weeks
 L.S. 2632

approved 12/8/58
 Alton R. Ruden

Total Δ
 $\Delta = 8' 33''$
 $R = 1065.24$
 $T = 79.63$
 $L = 158.96$

CITY OF OCEANSIDE
 LOT SPLIT of a portion of
 N.E. 1/4 of S.E. 1/4 Section 24
 T.11S. R.5W. S.B.M.

Legend:
 ● Indicates point found as noted
 ○ Indicates set 1" iron pipe with
 brass tag marked L.S. 2632

The basis of bearings for this
 survey is the West line of the
 N.E. 1/4 of the S.E. 1/4 of Section 24,
 T.11S., R.5W., S.B.M., as shown on
 Map No. 1956 i.e. N. 0° 25' 10" E.

