

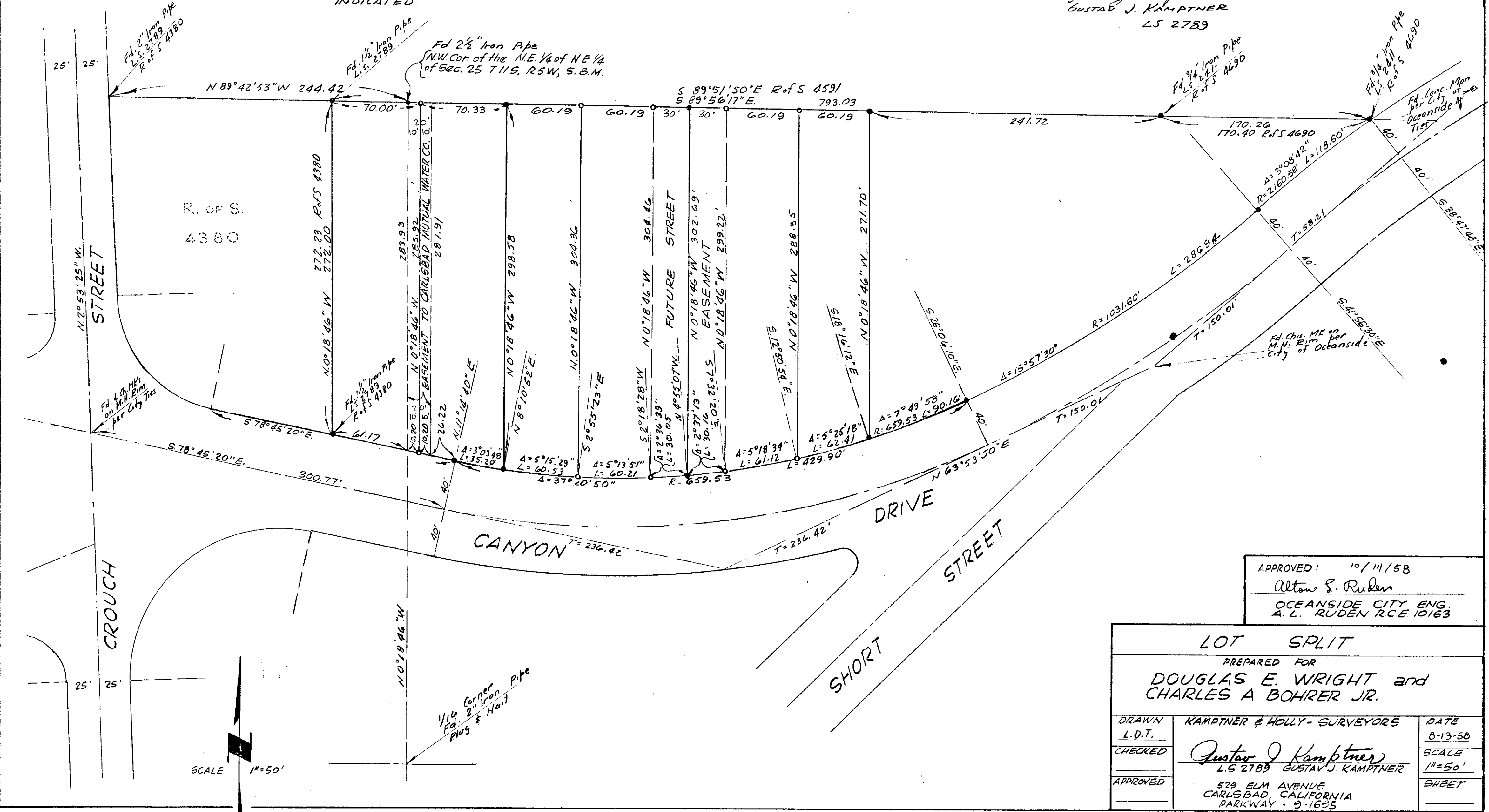
SPLIT LOT SURVEY
 OF A PORTION OF THE N. 1/2 OF THE N.E. 1/4 OF
 SEC. 25, T.11S, R.5W, S.B.M. IN THE CITY OF
 OCEANSIDE, CALIFORNIA
 AUGUST 1958

BASIS OF BEARINGS FOR THIS MAP IS THE CENTERLINE
 OF CROUCH STREET AS SHOWN ON THE CITY OF OCEANSIDE
 IMPROVEMENT PLAN NO R-195 - I.E. N. 2°53'25"W.

- INDICATES SET 3/4" IRON PIPE TAGGED LS 2789
- INDICATES MONUMENTS FOUND AS 3/4" IRON PIPE, L.S. 2789 UNLESS OTHERWISE INDICATED.

THIS MAP CORRECTLY REPRESENTS
 A SURVEY MADE UNDER MY SUPERVISION
 IN CONFORMANCE WITH THE REQUIREMENTS
 OF CHAPTER 15, DIVISION 3 OF THE
 BUSINESS AND PROFESSIONAL CODE AT THE
 REQUEST OF DOUGLAS E. WRIGHT and
 CHARLES A. BOHRER JR. IN OCT. 1958-

Gustav J. Kamptner
 GUSTAV J. KAMPTNER
 LS 2789



APPROVED: 10/14/58
 Alton S. Ruben
 OCEANSIDE CITY ENG.
 A. L. RUDEN R.C.E. 10163

LOT SPLIT		
PREPARED FOR DOUGLAS E. WRIGHT and CHARLES A. BOHRER JR.		
DRAWN L.D.T.	KAMPTNER & HOLLY - SURVEYORS	DATE 8-13-58
CHECKED	Gustav J. Kamptner L.S. 2789 GUSTAV J. KAMPTNER	SCALE 1"=50'
APPROVED	529 ELM AVENUE CARLSBAD, CALIFORNIA PARKWAY - 9-1635	SHEET

